

EDGE

RAHA ISLAND

 RAK  
PROPERTIES





The Apex of Living.

EDGE  
RAHA ISLAND



# Cutting EDGE.

EDGE at Raha Island is a pioneering residential oasis, redefining the gateway to Raha Island in the dynamic heart of Mina Al Arab, Ras Al Khaimah.





A modern high-rise building with a rooftop pool and lounge area at sunset. The building features glass facades and balconies with glass railings. The rooftop pool is illuminated with blue and white lights, and the lounge area is furnished with contemporary outdoor furniture. The sky is a mix of blue and orange, with clouds reflecting the sunset. The overall scene is a luxurious urban lifestyle.

Urban  
Island  
Living.  
Defined.



At the heart of EDGE lies a core philosophy, merging contemporary urban living with the serene essence of coastal life.

It's a sanctuary that beautifully balances dynamism with tranquillity.







# Inspired.

EDGE stands as an architectural marvel with a striking silhouette. Its bold and angular balconies cascade outward, their sudden flow of energy reflecting the impulsive spirit of maritime elegance.



# Yacht Influenced Design.

The sleek lines of the balconies mimic a yacht's grace, enhancing the building's maritime ambiance. In a realm where sharp lines meet urban character, residents can glory in the unparalleled views of the tantalising lagoon beyond.





A luxury yacht is shown from the side, moving across the water. The sun is low on the horizon, creating a bright, shimmering path of light on the water's surface. Three people are swimming in the water behind the yacht, appearing to be in conversation. The background shows a calm sea and distant landmasses under a clear sky.

# Harmonious.

EDGE masterfully blends the splendour of natural landscapes with the pinnacle of sophisticated architectural design. Respecting and honouring the rich coastal environment elevates the development's aesthetic and experiential qualities to create a harmonious fusion that redefines luxury living.





Lush greenery gracefully softens the urban edges while thoughtfully designed lighting enhances the night-time ambiance, reframing the structure's presence as a welcoming idyll of calm.

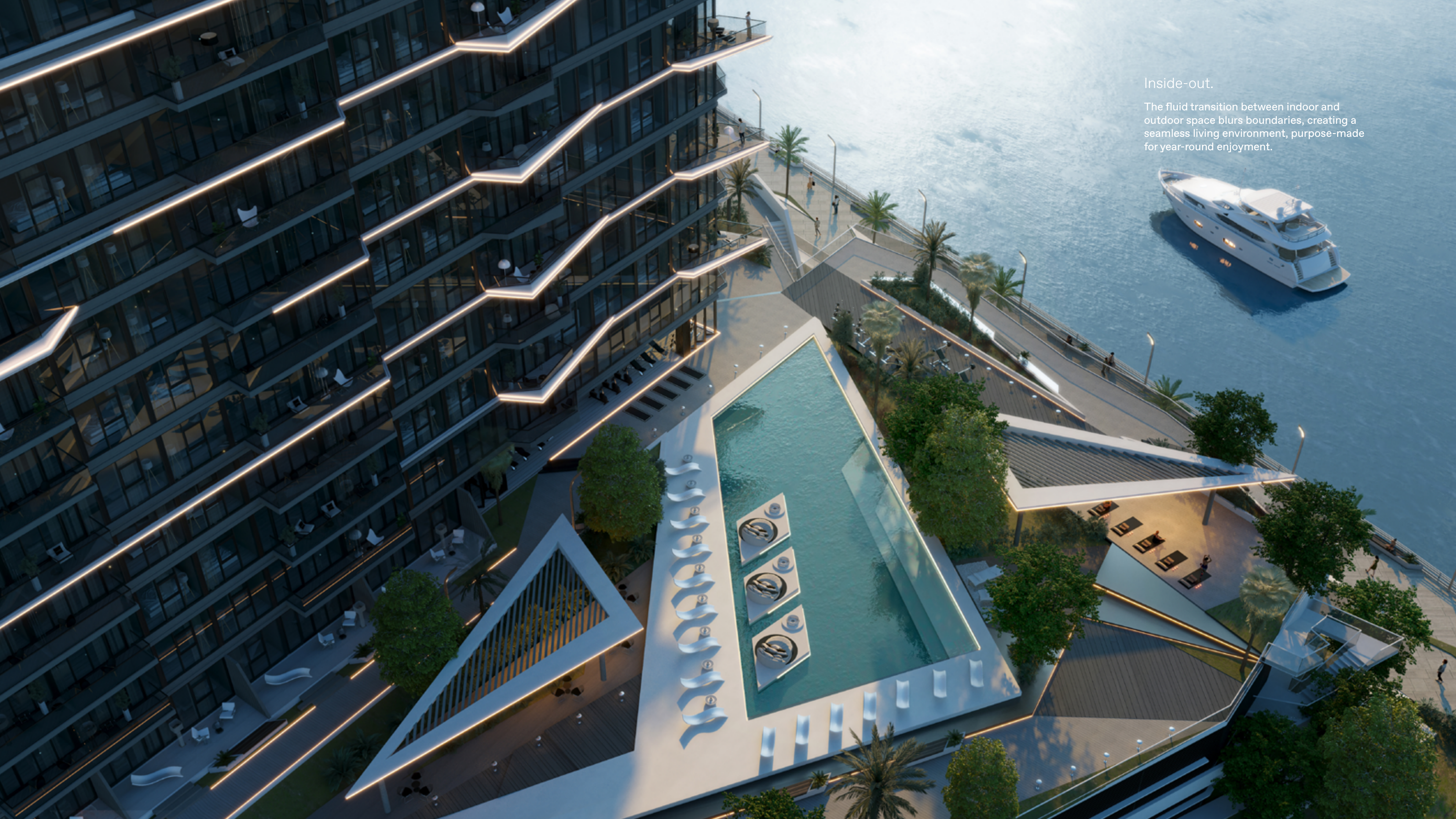




Unparalleled

Living.





Inside-out.

The fluid transition between indoor and outdoor space blurs boundaries, creating a seamless living environment, purpose-made for year-round enjoyment.







# Amenities With an EDGE.

EDGE has been meticulously designed to offer a lifestyle that harmoniously balances active urban living and the placid rhythms of a coastal retreat.

## Amenities include:

- 1 Lounge / club house**  
The epicentre of community activities and memorable events.
- 2 Skating area**  
A dedicated, all-ages skating haven for fun and excitement.
- 3 Outdoor kids area**  
A secure and stimulating play zone for children's enjoyment.
- 4 Lounge & bar / relaxed seating**  
An elegant retreat with a bar, perfect for relaxed socialising.
- 5 Pool**  
An expansive swimming pool seamlessly connected to the gym to offer a holistic fitness experience.
- 6 Outdoor Gym**  
A state-of-the-art fitness facility set in a refreshing open-air environment.
- 7 Barbecue area**  
Custom-designed areas for delightful outdoor grilling and social gatherings.
- 8 Gym (Indoor)**  
A cutting-edge indoor fitness centre equipped with the latest exercise technology.
- 9 Retail / F&B**  
A selection of convenient and stylish shopping options within the community.
- 10 Kids Club**  
An engaging space with scheduled activities to inspire children.





## Push your limits.

The gym at EDGE is a dynamic space pulsating with energy and vitality, designed to support an active lifestyle. Enjoy unfettered access to our dazzling swimming pool for a comprehensive fitness experience.







### First impressions.

Fluidly extending from the exterior, the clean, architectural design elements of the lobby and reception areas flow effortlessly into the interior space.









# Sanctuary.

EDGE offers a variety of living spaces, each embodying comfort and style. From the serenity of our studios and one-bedroom apartments to the family-centric design of our two-bedroom residences and the elevated elegance of our penthouses, every space is a sanctuary.

Unit	Description
Studio	Compact and efficient living space ideal for individuals or couples.
1 Bedroom Suite	Spacious one-bedroom apartment designed for comfort and convenience.
1 Bedroom Premium	Upgraded one-bedroom apartment with premium finishes and features.
1 Bedroom Chalet	Unique one-bedroom unit with chalet-style design and lagoon access.
2 Bedroom	Two-bedroom residence perfect for family holidays or longer stays.
2 Bedroom Penthouse	Luxurious penthouse with superior finishes and panoramic views.







### Naturally illuminated.

Expansive windows act as an alluring canvas for the outside world, flooding the space with natural light and offering exquisite views to elevate your living experience.









# Future Focused.

## Technology integration.

EDGE incorporates smart home technology throughout its residences, enhancing the living experience with features available through smartphones or voice commands, including:

---

Security systems

---

Energy management features

---

Lighting control

---

Climate control

---

Window treatments

## Sustainability.

Sustainability is a cornerstone of the development strategy for RAK Properties.

The project incorporates several eco-friendly practices and materials, focusing on energy efficiency, water conservation and green building materials to minimise the carbon footprint and improve overall energy performance.

## Biodiversity.

Mina Al Arab's landscape design enhances local biodiversity with tailored plant species supporting local fauna and providing habitats for birds, insects and other wildlife, essential for maintaining ecological balance.







Welcome to Extraordinary.





**lilo**  
Mina al arab

**lilo**  
Raha island  
at Mina al arab

**VIBRANT WATERFRONT LIVING**

Raha Island delivers a seaside experience that's both sophisticated and lively. It features exclusive communities, vibrant public beaches, and a dynamic mix of dining, shopping, hotels and leisure options.

**EDGE**  
RAHA ISLAND

**lilo**  
Hayat island  
at Mina al arab

**HOLIDAY LIVING – EVERYDAY**

Hayat Island redefines serene living with an elegant and luxurious touch. It features exclusive enclaves like Angel Bay and the InterContinental Resort and Spa, designed for those seeking privacy and high-end amenities. Enjoy direct beach access, shaded seating plazas, jogging and cycling lanes, waterfront dining, community events, and outdoor gyms.

**INTERCONTINENTAL RESORT & SPA**

**NIKKI BEACH RESORT & SPA**

**ANANTARA RESORT**

**lilo**  
Lagoons  
at Mina al arab

**URBAN WATERFRONT LIVING**

Vibrant and social, The Lagoons is where urban amenities meet waterfront serenity. It's the ultimate locale for those who want to live life to the fullest, right on the water's edge.





A premier lifestyle and  
leisure destination.

Welcome to the extraordinary island  
destination of Mina Al Arab, where  
urban life melds with coastal bliss  
and each day will etch remarkable  
and lasting memories on your heart.





Capturing the wonders  
of nature.

Spanning over two million square metres of protected mangroves, Mina Al Arab offers an unparalleled sanctuary for observing the enchanting wildlife of the region, from graceful flamingos to majestic turtles and playful dolphins.







## NIKKI BEACH

In collaboration with Nikki Beach Global we are poised to unveil a unique blend of luxury at Nikki Beach Resort & Spa, exclusively at Mina Al Arab. Immerse yourself in Nikki Beach's signature opulence, perfectly capturing the barefoot spirit of island life.



## INTERCONTINENTAL HOTELS & RESORTS

350 exquisite rooms and suites featuring premium facilities, from a world-class health club and rejuvenating spa to an array of internationally acclaimed restaurants. Perfect for discerning and ecologically aware travellers seeking a sophisticated but sustainable escape.



## ANANTARA HOTELS · RESORTS · SPAS

Anantara Mina Al Arab Resort unveils the emirate's first Maldivian-inspired overwater villas, setting a new standard for luxury living. Featuring a private beach and a myriad of premium health and sports amenities, including the celebrated Anantara Spa, this resort offers an unrivalled sanctuary of wellness and opulence.





## Discover Mina Al Arab.

Enjoy the pinnacle of waterfront luxury living at Mina Al Arab, capturing the interplay of sedate relaxation and zestful energy. Nestled amidst sensational landscapes and stunning waterfront views, this community exemplifies sophisticated coastal elegance.



## Dive into Raha Island.

Indulge in the ultimate lavish lifestyle at Raha Island. Immerse yourself in a world of incomparable style and unforgettable charm surrounded by magnificent landscapes and awe-inspiring waterfront panoramas.

## Natures wonder at Al Arab.

Immerse yourself in nature's embrace, where a vibrant tapestry of wildlife flourishes amidst the placid and profound beauty of 7,000 verdant trees, epitomising our dedication to nurturing a thriving natural habitat.



## The future of Ras Al Khaimah.

Witness the remarkable transformative journey of Ras Al Khaimah as it redefines luxury and entertainment with a series of spectacular new developments.

On the cusp of becoming a premier destination for unparalleled luxury and excitement, the emirate invites you to be part of its visionary journey.





# Mina. The story continues. Coming to Raha Island.



## The wharf.

Teeming with an eclectic fusion of upscale retail, exquisite dining and leisure pursuits, set against a waterfront backdrop.

## Waterfront promenade.

Dreamy setting for leisurely strolls and magical sunset vistas, elevating the island's tranquil lifestyle to new heights.

## Club house.

Where vibrant social events and captivating cultural activities forge community bonds that transcend time.

## Retail strip.

Indulge in luxury shopping within the sophisticated retail strip, where exclusive brands and bespoke services meet the refined tastes of Raha Island residents.

## Al fresco dining.

Raha Island's dining options are curated to offer memorable experiences, with outdoor seating inviting guests to soak in the vibrant atmosphere and scenic beauty.

## Connectivity.

A complimentary water transit will offer seamless connectivity across Mina Al Arab, providing residents and visitors the ability to explore local attractions or catch the hydrofoil to other Emirates to the south.

## Marina.

The perfect launching point for nautical adventures or just a relaxed day out on the water, Raha Island's state of the art marina caters to the needs of discriminating maritime enthusiasts, offering peerless services and refined surroundings for indulgent experiences.



We believe in the power of vision, honouring the legacy of our forefathers and understanding our role in the emergence of RAK.

We are eternally inspired by the wonders of our landscapes; picturesque mountains and mysterious deserts, crystal clear waters and golden sands, abundant natural mangroves and nature, a city rich with culture and heritage. This is the foundation from which we thrive.

We are energised by people and communities brought to life through experiential placemaking and by creating exceptional destinations, where lifestyles take centre stage. We deliver development with a purpose.

## United Arab Emirates.

A vibrant mix of stability, growth and cultural diversity, making it a prime destination for investors in search of both security and luxury.



Ras Al Khaimah stands out for its stunning natural scenery and growing economy. It's not just a strategic business location, but a gateway to nature and an enhanced lifestyle.

## Life in Ras Al Khaimah.

Perfect for investors looking for the best of all worlds, enter a realm where nature's harmony blends with the paragon of style. Discover pristine beaches, opulent five-star resorts and a peaceful pace of life that transcends the ordinary.

## Globally Connected.

Car journey times to:

	Dubai International Airport	45 minutes
	Ras Al Khaimah International Airport	15 minutes







EDGE

RAHA ISLAND





THEEDGE.AE

 **RAK**  
PROPERTIES