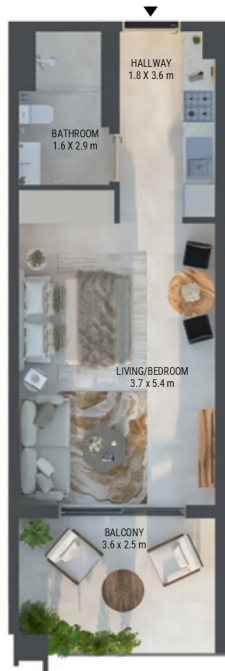


A blue-tinted photograph of a snow-capped mountain range. The central focus is a sharp, jagged peak. The foreground shows a rocky ridge with patches of snow. The background features a vast, hazy mountain range under a clear sky. The text 'FLOOR PLANS' is overlaid in white, serif, all-caps font on the right side of the image.

FLOOR
PLANS

UNIT 17 STUDIO

TYPICAL UNIT TYPE 01



UNIT 18 STUDIO

TYPICAL UNIT TYPE 02



TOTAL AREA

488.14 SQ.FT. 45.35 SQ.M.

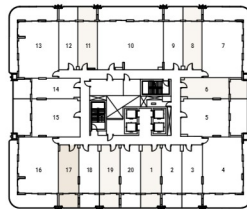
TOTAL INTERNAL AREA

377.28 SQ.FT. 35.05 SQ.M.

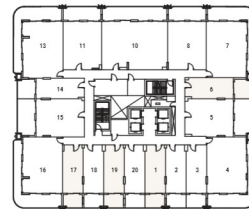
TOTAL EXTERNAL AREA

110.87 SQ.FT. 10.30 SQ.M.

LEVELS 1 - 5
FLOOR PLATE



LEVELS 6 - 11
FLOOR PLATE



*Indicative floor plate shows the actual unit in dark beige and typical units of the same type in light beige.

**All drawings and dimensions are approximate. Drawings are not to scale and are subject to change without notice. The developer reserves the right to make revisions. The units are measured as a typical floor in the building and columns may vary in size depending on the floor level. The furnishings and accessories shown are for representation purposes only. The length and width of the unit and balcony varies depending on the floor and orientation, in line with building authority regulations and compliance.

TOTAL AREA

488.14 SQ.FT. 45.35 SQ.M.

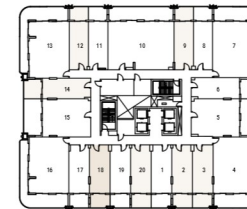
TOTAL INTERNAL AREA

377.28 SQ.FT. 35.05 SQ.M.

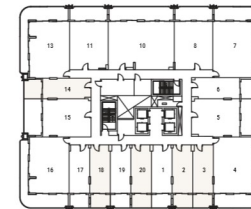
TOTAL EXTERNAL AREA

110.87 SQ.FT. 10.30 SQ.M.

LEVELS 1 - 5
FLOOR PLATE



LEVELS 6 - 11
FLOOR PLATE



*Indicative floor plate shows the actual unit in dark beige and typical units of the same type in light beige.

**All drawings and dimensions are approximate. Drawings are not to scale and are subject to change without notice. The developer reserves the right to make revisions. The units are measured as a typical floor in the building and columns may vary in size depending on the floor level. The furnishings and accessories shown are for representation purposes only. The length and width of the unit and balcony varies depending on the floor and orientation, in line with building authority regulations and compliance.

UNIT 05

1 BEDROOM

TYPICAL UNIT TYPE 01



UNIT 08

1 BEDROOM

TYPICAL UNIT TYPE 02



TOTAL AREA

946.69 SQ.FT. 87.95 SQ.M.

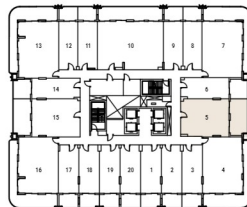
TOTAL INTERNAL AREA

689.97 SQ.FT. 64.10 SQ.M.

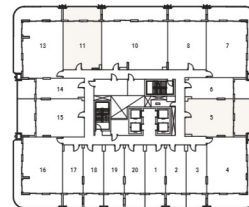
TOTAL EXTERNAL AREA

256.72 SQ.FT. 23.85 SQ.M.

LEVELS 1 - 5
FLOOR PLATE



LEVELS 6 - 11
FLOOR PLATE



*Indicative floor plate shows the actual unit in dark beige and typical units of the same type in light beige.

**All drawings and dimensions are approximate. Drawings are not to scale and are subject to change without notice. The developer reserves the right to make revisions. The units are measured as a typical floor in the building and columns may vary in size depending on the floor level. The furnishings and accessories shown are for representation purposes only. The length and width of the unit and balcony varies depending on the floor and orientation, in line with building authority regulations and compliance.

TOTAL AREA

930.43 SQ.FT. 86.44 SQ.M.

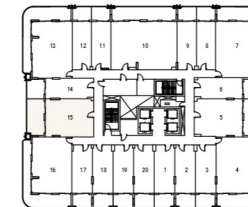
TOTAL INTERNAL AREA

720.00 SQ.FT. 66.89 SQ.M.

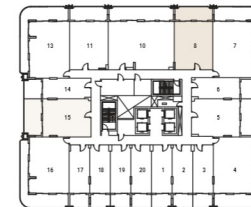
TOTAL EXTERNAL AREA

210.43 SQ.FT. 19.55 SQ.M.

LEVELS 1 - 5
FLOOR PLATE



LEVELS 6 - 11
FLOOR PLATE



*Indicative floor plate shows the actual unit in dark beige and typical units of the same type in light beige.

**All drawings and dimensions are approximate. Drawings are not to scale and are subject to change without notice. The developer reserves the right to make revisions. The units are measured as a typical floor in the building and columns may vary in size depending on the floor level. The furnishings and accessories shown are for representation purposes only. The length and width of the unit and balcony varies depending on the floor and orientation, in line with building authority regulations and compliance.

UNIT 04

3 BEDROOM

TYPICAL UNIT TYPE 01



UNIT 16

3 BEDROOM

TYPICAL UNIT TYPE 02



TOTAL AREA

1319.33 SQ.FT. 122.57 SQ.M.

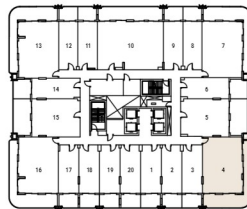
TOTAL INTERNAL AREA

890.07 SQ.FT. 82.69 SQ.M.

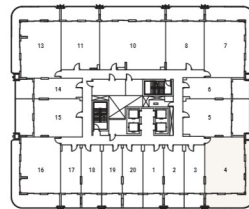
TOTAL EXTERNAL AREA

429.26 SQ.FT. 39.88 SQ.M.

LEVELS 1 - 5
FLOOR PLATE



LEVELS 6 - 11
FLOOR PLATE



TOTAL AREA

1326.97 SQ.FT. 123.28 SQ.M.

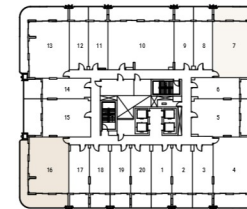
TOTAL INTERNAL AREA

890.61 SQ.FT. 82.74 SQ.M.

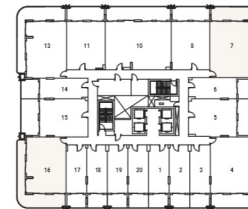
TOTAL EXTERNAL AREA

436.37 SQ.FT. 40.54 SQ.M.

LEVELS 1 - 5
FLOOR PLATE



LEVELS 6 - 11
FLOOR PLATE



*Indicative floor plate shows the actual unit in dark beige and typical units of the same type in light beige.

**All drawings and dimensions are approximate. Drawings are not to scale and are subject to change without notice. The developer reserves the right to make revisions. The units are measured as a typical floor in the building and columns may vary in size depending on the floor level. The furnishings and accessories shown are for representation purposes only. The length and width of the unit and balcony varies depending on the floor and orientation, in line with building authority regulations and compliance.

*Indicative floor plate shows the actual unit in dark beige and typical units of the same type in light beige.

**All drawings and dimensions are approximate. Drawings are not to scale and are subject to change without notice. The developer reserves the right to make revisions. The units are measured as a typical floor in the building and columns may vary in size depending on the floor level. The furnishings and accessories shown are for representation purposes only. The length and width of the unit and balcony varies depending on the floor and orientation, in line with building authority regulations and compliance.

UNIT 13

3 BEDROOM

TYPICAL UNIT TYPE 03



UNIT 10

3 BEDROOM

TYPICAL UNIT TYPE 04



TOTAL AREA

1322.24 SQ.FT. 122.84 SQ.M.

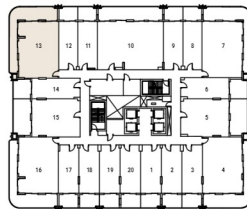
TOTAL INTERNAL AREA

890.50 SQ.FT. 82.73 SQ.M.

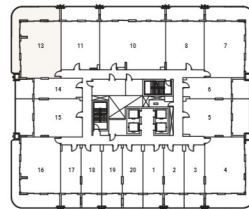
TOTAL EXTERNAL AREA

431.74 SQ.FT. 40.11 SQ.M.

LEVELS 1 - 5
FLOOR PLATE



LEVELS 6 - 11
FLOOR PLATE



*Indicative floor plate shows the actual unit in dark beige and typical units of the same type in light beige.

**All drawings and dimensions are approximate. Drawings are not to scale and are subject to change without notice. The developer reserves the right to make revisions. The units are measured as a typical floor in the building and columns may vary in size depending on the floor level. The furnishings and accessories shown are for representation purposes only. The length and width of the unit and balcony varies depending on the floor and orientation, in line with building authority regulations and compliance.

TOTAL AREA

1569.59 SQ.FT. 145.82 SQ.M.

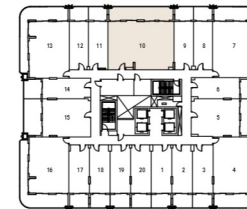
TOTAL INTERNAL AREA

1213.95 SQ.FT. 112.78 SQ.M.

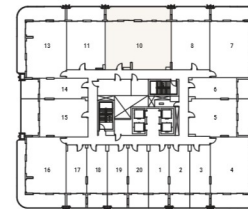
TOTAL EXTERNAL AREA

355.64 SQ.FT. 33.04 SQ.M.

LEVELS 1 - 5
FLOOR PLATE



LEVELS 6 - 11
FLOOR PLATE



*Indicative floor plate shows the actual unit in dark beige and typical units of the same type in light beige.

**All drawings and dimensions are approximate. Drawings are not to scale and are subject to change without notice. The developer reserves the right to make revisions. The units are measured as a typical floor in the building and columns may vary in size depending on the floor level. The furnishings and accessories shown are for representation purposes only. The length and width of the unit and balcony varies depending on the floor and orientation, in line with building authority regulations and compliance.