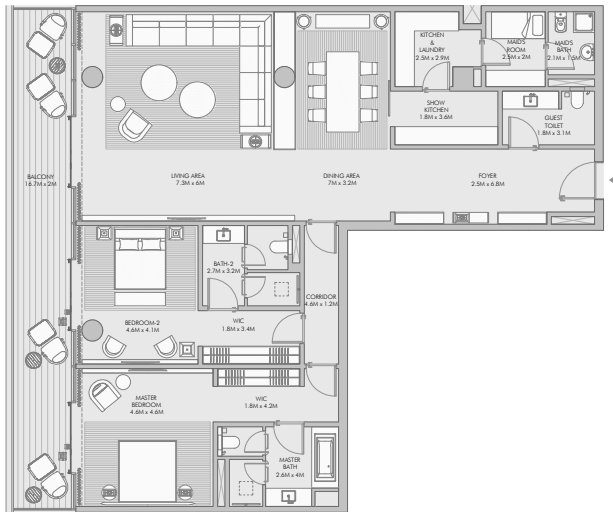


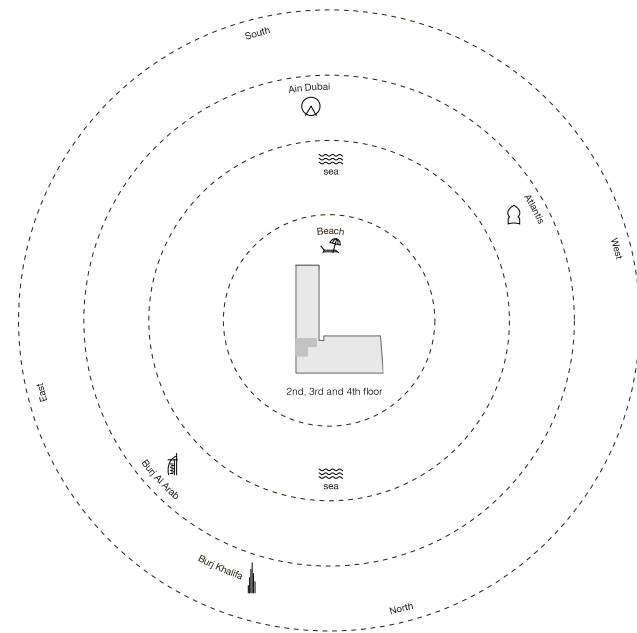
Two Bedroom Type A - Floor Plan



50

Two Bedroom Type A - Unit Details

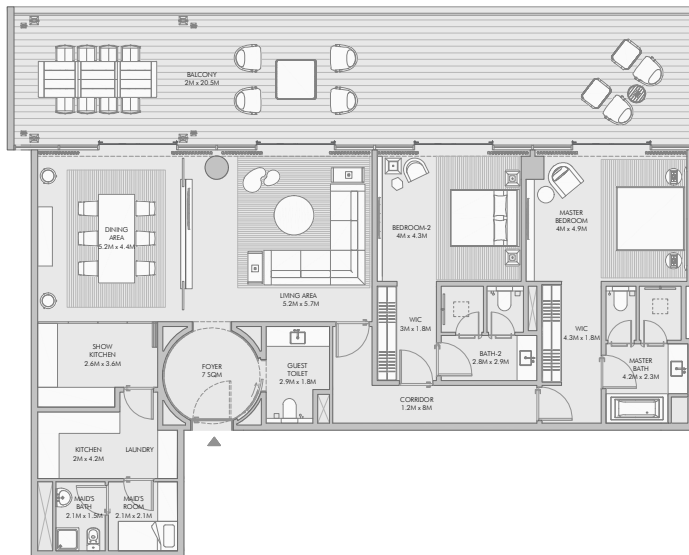
Unit Numbers	Unit Area	Balcony Area	Total Area
B-202, B-302, B-402	213.08 m ² (2,294 sqft)	033.72 m ² (363 sqft)	246.80 m ² (2,657 sqft)



51

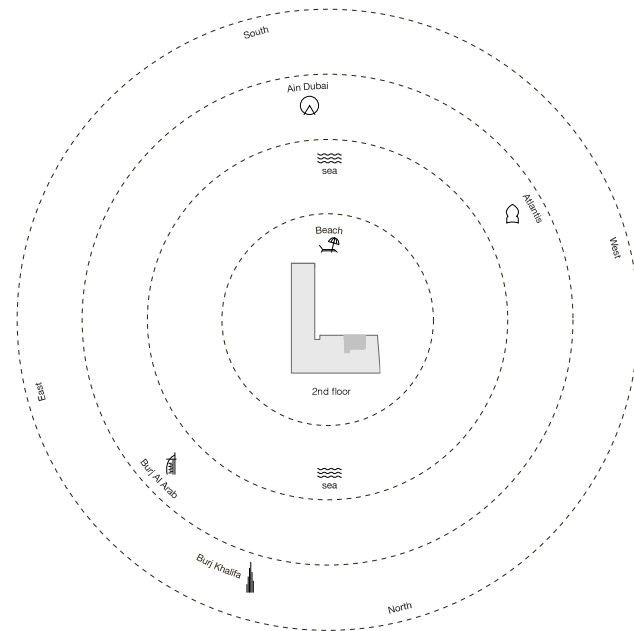
*Measurements are indicative 'bracket to bracket' in Metric & Imperial including construction tolerance. **Unit dimensions may vary from brochure, and unit types/line may exist as mirrored versions. **All images used are for illustrative purposes only. **If it is stated otherwise, all fittings and interior decorative items shown are for illustrative purposes only. **The developer reserves the right to make alterations, at its sole & sole discretion, without any liability whatsoever up to the final 'as built' status.

Two Bedroom Type B - Floor Plan



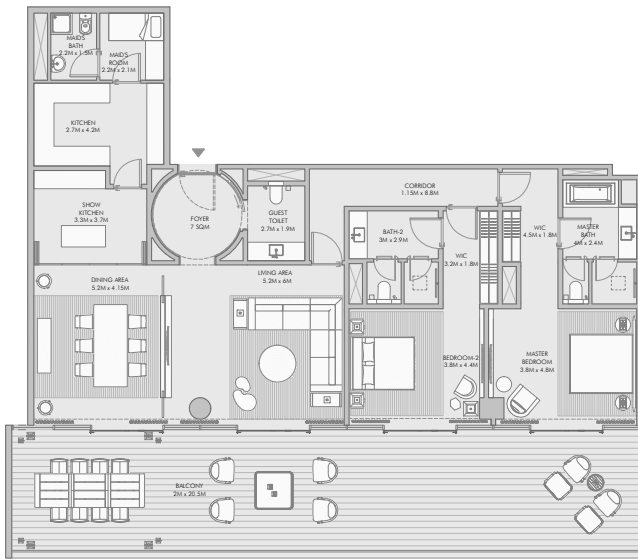
Two Bedroom Type B - Unit Details

Unit Numbers	Unit Area	Balcony Area	Total Area
A-202	187.76 m ² (2,021 sqft)	084.11 m ² (905 sqft)	271.87 m ² (2,926 sqft)



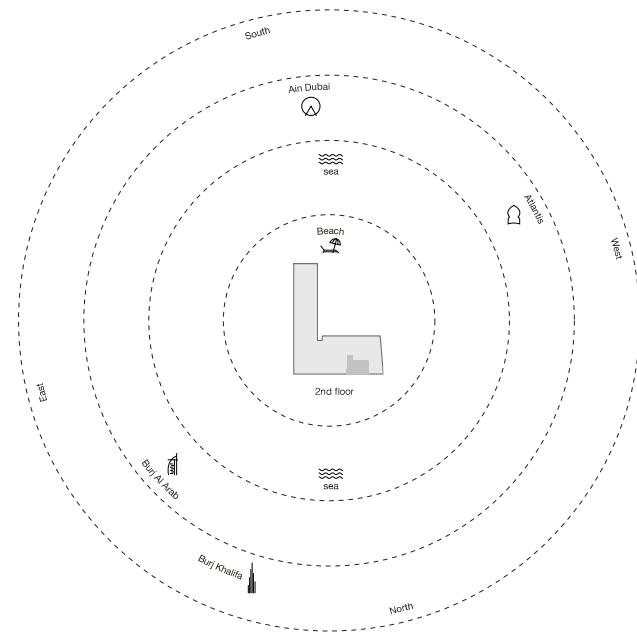
*Measurements are indicative 'finish to finish' in Metric & Imperial including construction tolerance. **All unit dimensions may vary from brochure, and unit types/line may exist as mirrored versions. **All images used are for illustrative purposes only. **If it is stated otherwise, all fittings and minor decorative items shown are for illustrative purposes only. **The developer reserves the right to make alterations, at its sole discretion, without any liability whatsoever up to the final 'as built' status.

Two Bedroom Type C - Floor Plan



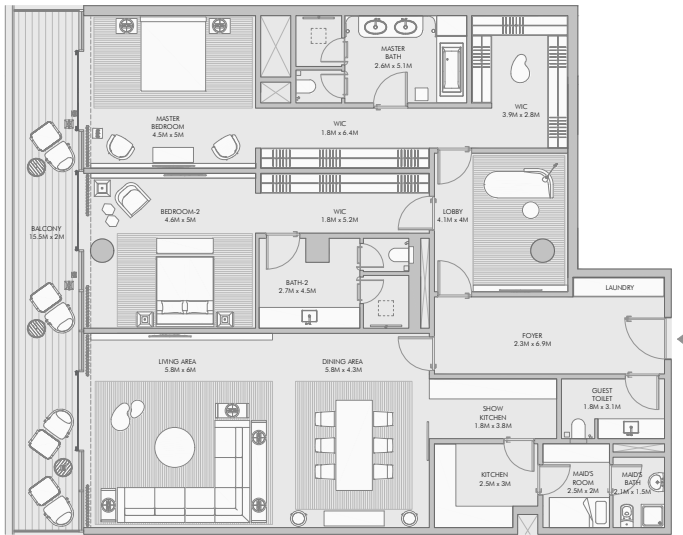
Two Bedroom Type C - Unit Details

Unit Numbers	Unit Area	Balcony Area	Total Area
A-201	191,34 m ² (2,060 sqft)	084,12 m ² (905 sqft)	275,46 m ² (2,965 sqft)



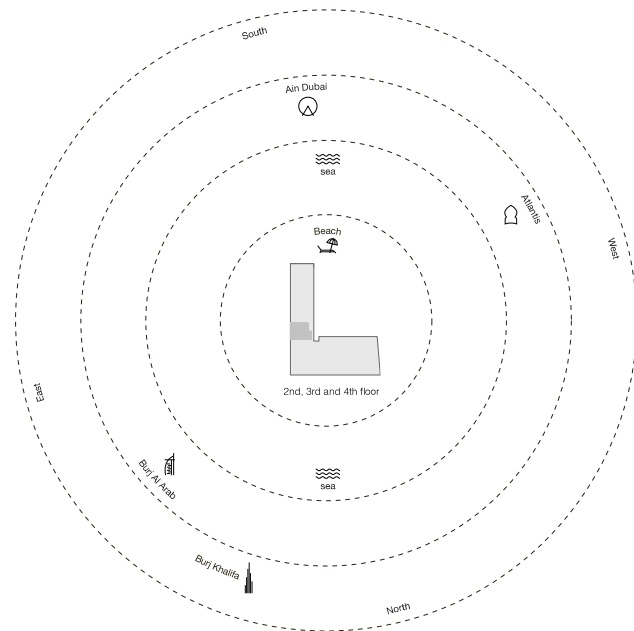
*Measurements are indicative 'finish to finish' in Metric & Imperial including construction tolerance. **All unit dimensions may vary from brochure, and unit types/line may exist as enclosed versions. ***All images used are for illustrative purposes only. ****As stated otherwise, all fittings and interior decorative items shown are for illustrative purposes only. *****The developer reserves the right to make alterations, at its sole discretion, without any liability whatsoever up to the final 'as built' status.

Two Bedroom Type D - Floor Plan



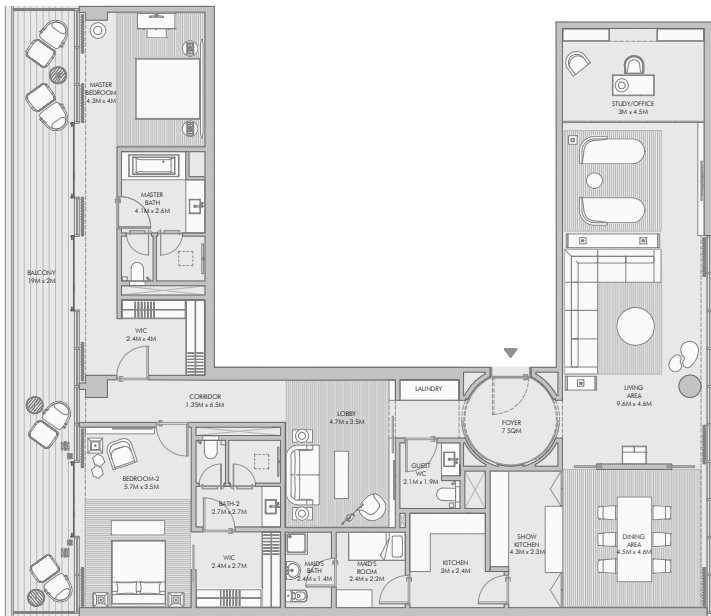
Two Bedroom Type D - Unit Details

Unit Numbers	Unit Area	Balcony Area	Total Area
B-203, B-303, B-403	247,25 m ² (2,661 sqft)	031,26 m ² (337 sqft)	278,51 m ² (2,998 sqft)



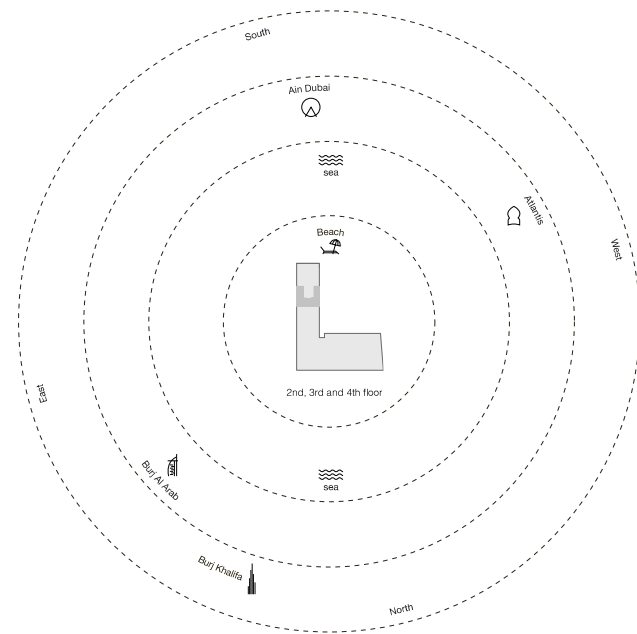
*Measurements are indicative. "Finish to Finish" in Metric & Imperial including construction tolerance. **Final dimensions may vary from brochure, and unit types/line may exist as mirrored versions. **All images used are for illustrative purposes only. **If not stated otherwise, all fittings and interior decorative items shown are for illustrative purposes only. **The developer reserves the right to make alterations, at its sole & sole discretion, without any liability whatsoever up to the final "as built" status.

Two Bedroom Type E - Floor Plan



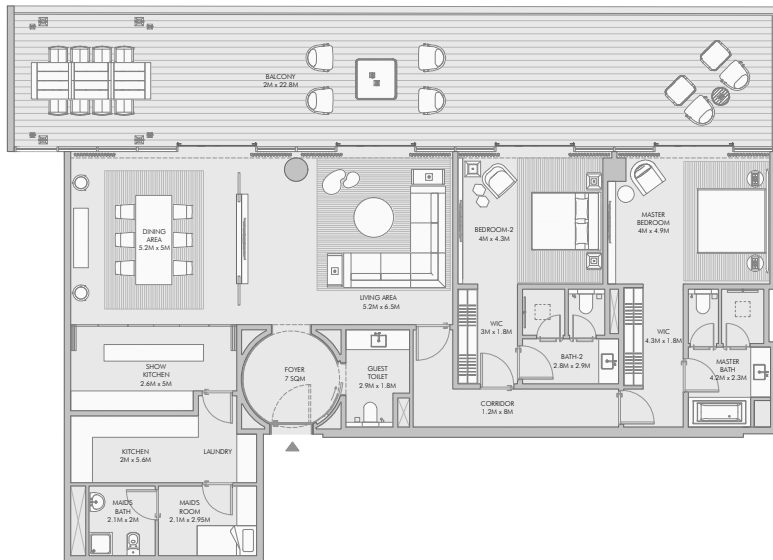
Two Bedroom Type E - Unit Details

Unit Numbers	Unit Area	Balcony Area	Total Area
C-201, C-301, C-401	253,38 m ² (2,727 sqft)	038,64 m ² (416 sqft)	292,02 m ² (3,143 sqft)



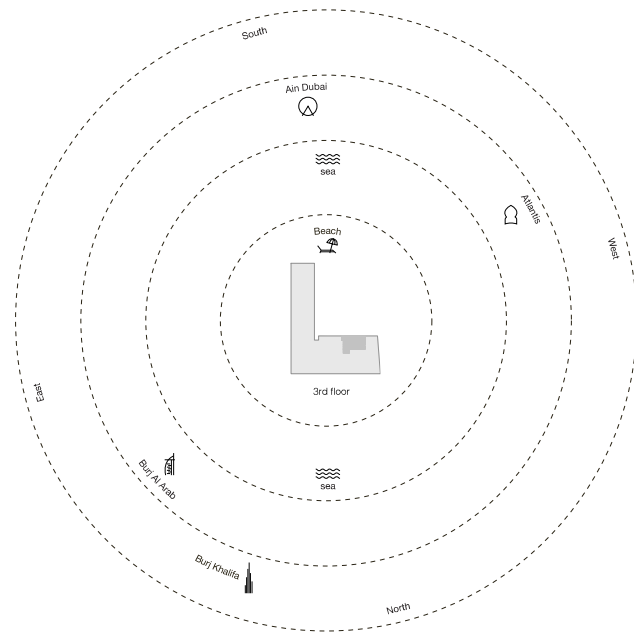
*Measurements are indicative. "Finish to Finish" in Metric. Excluding construction tolerance. All unit dimensions may vary from brochure, and unit types/line may exist as mirrored versions. All images used are for illustrative purposes only. All items stated otherwise, all fittings and interior decorative items shown are for illustrative purposes only. The developer reserves the right to make alterations, at its sole discretion, without any liability whatsoever up to the final "as built" status.

Two Bedroom Type F - Floor Plan



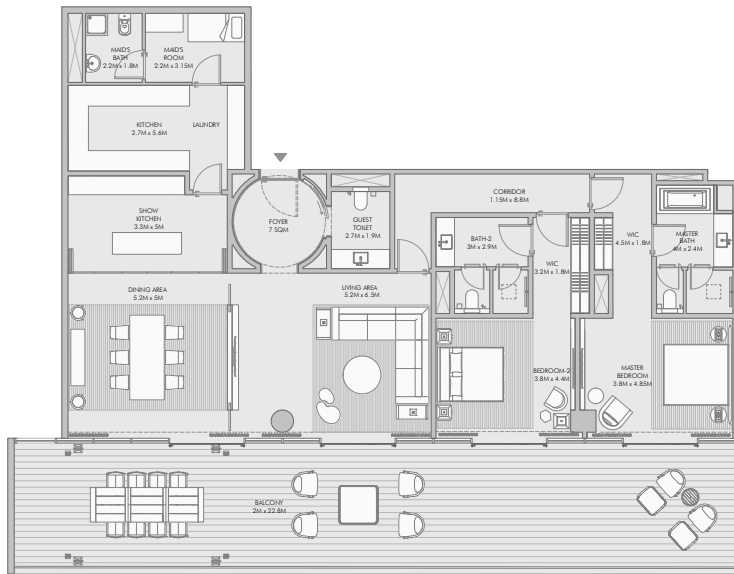
Two Bedroom Type F - Unit Details

Unit Numbers	Unit Area	Balcony Area	Total Area
A-302	204.56 m ² (2,202 sqft)	094.07 m ² (1,012 sqft)	298.63 m ² (3,214 sqft)



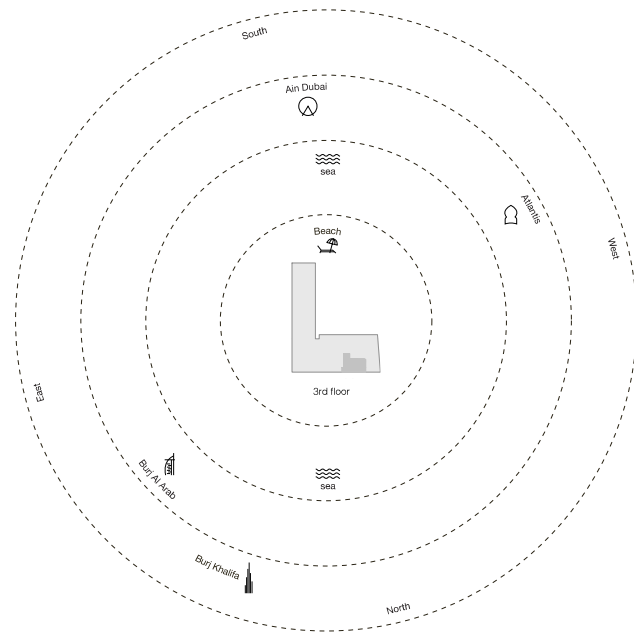
*Measurements are indicative 'finish to finish' in Metric & Imperial including construction tolerance. **All unit dimensions may vary from brochure, and unit types/line may exist as mirrored versions. **All images used are for illustrative purposes only. ***As stated otherwise, all fittings and interior decorative items shown are for illustrative purposes only. **The developer reserves the right to make alterations, at its sole discretion, without any liability whatsoever up to the final 'as built' status.

Two Bedroom Type G - Floor Plan



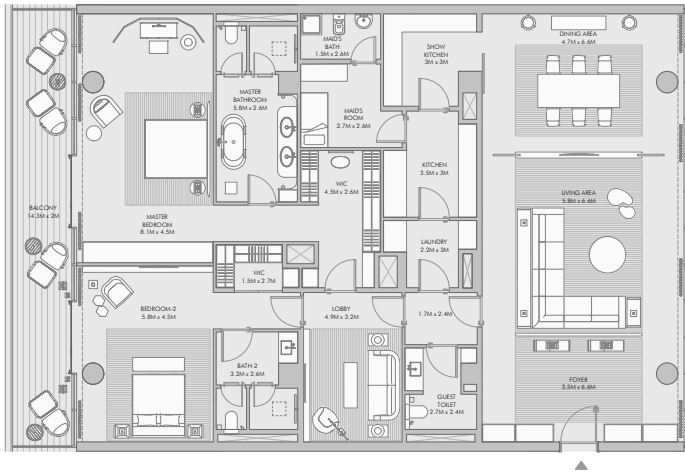
Two Bedroom Type G - Unit Details

Unit Numbers	Unit Area	Balcony Area	Total Area
A-301	208,97 m ² (2,260 sqft)	094,13 m ² (1,013 sqft)	304,10 m ² (3,273 sqft)



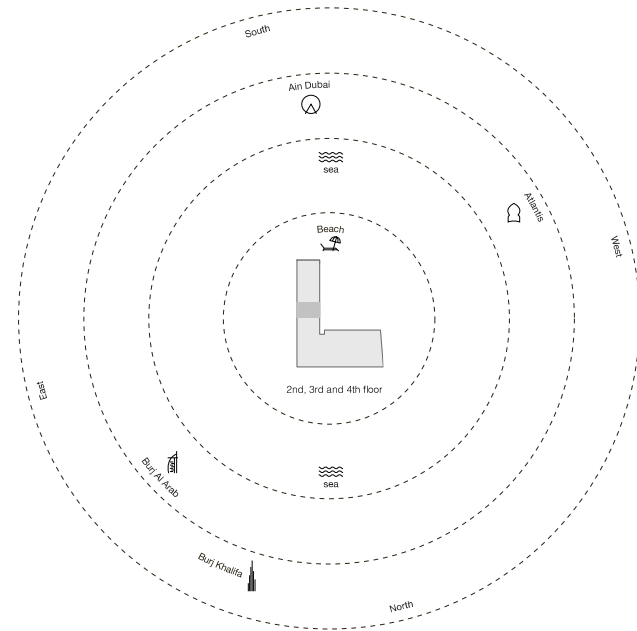
*Measurements are indicative. "Finish to Finish" in Metric. All figures excluding construction tolerance. All unit dimensions may vary from brochure, and unit types/line may exist as mirrored versions. All images used are for illustrative purposes only. All sizes stated otherwise, all fittings and interior decorative items shown are for illustrative purposes only. The developer reserves the right to make alterations, at its absolute discretion, without any liability whatsoever up to the final "as built" status.

Two Bedroom Type H - Floor Plan



Two Bedroom Type H - Unit Details

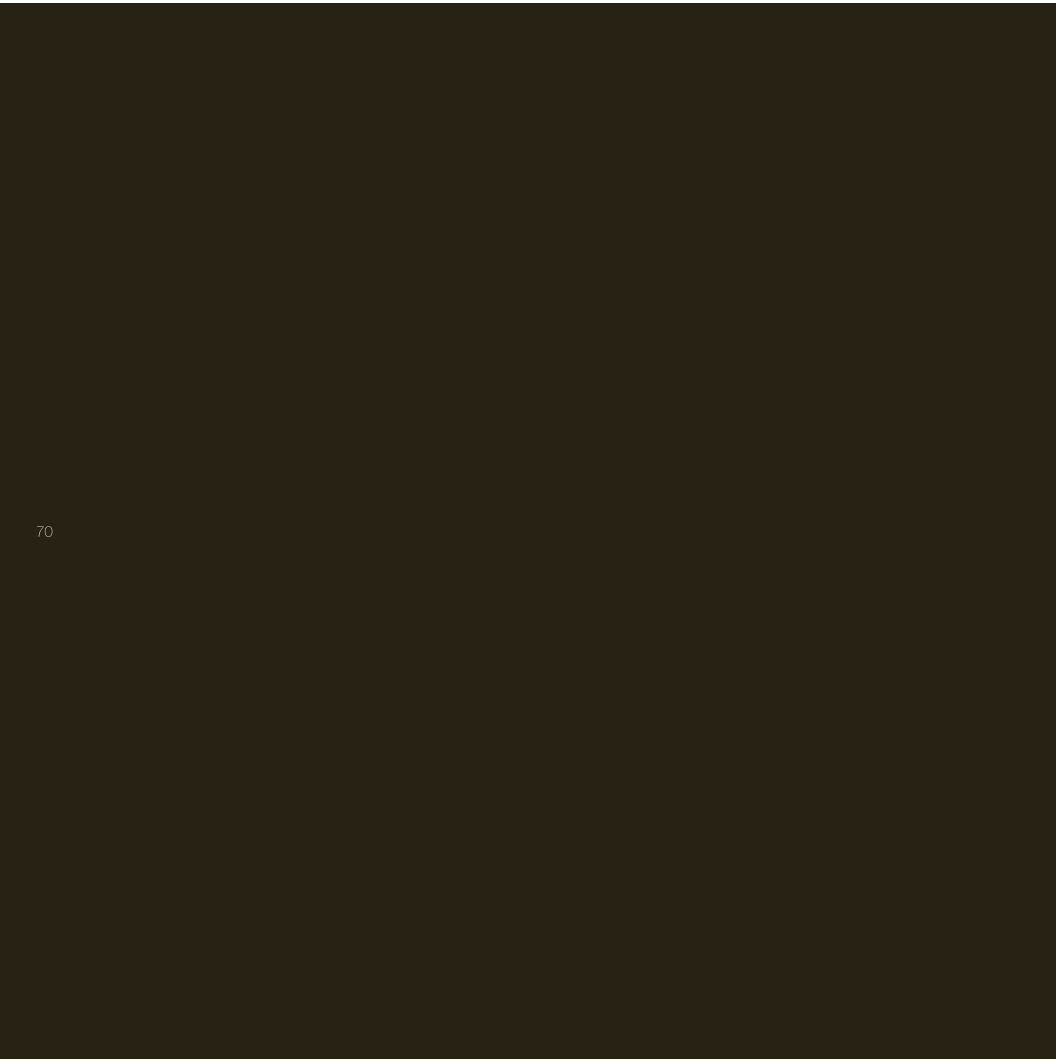
Unit Numbers	Unit Area	Balcony Area	Total Area
B-204, B-304, B-404	285.01 m ² (3,068 sqft)	029.04 m ² (312 sqft)	314.05 m ² (3,380 sqft)



*All measurements are indicative "finish to finish" in Metric & Imperial including construction tolerance. **All unit dimensions may vary from brochure, and unit types/line may exist as mirrored versions. ***All images used are for illustrative purposes only. ****If it is stated otherwise, all fittings and minor decorative items shown are for illustrative purposes only. *****The developer reserves the right to make alterations, at its absolute discretion, without any liability whatsoever up to the final "as built" status.









Stately luxury *with three bedrooms*

There are few three-bedroom homes in Dubai that offer the level of comfort and style you can expect at Armani Beach Residences.

Step inside and be greeted by an expansive living area with floor-to-ceiling windows and sanctuaries of comfort that showcase breathtaking ocean panoramas.

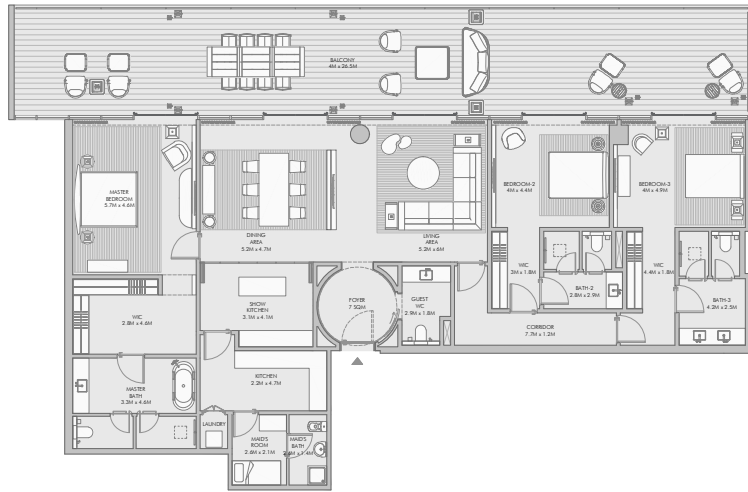
Every detail is designed to pamper and delight as a sprawling terrace provides ample space for entertaining guests or simply relaxing under the sun.

All three-bedroom residences come with a €35,000 certificate for Armani/Casa furniture.



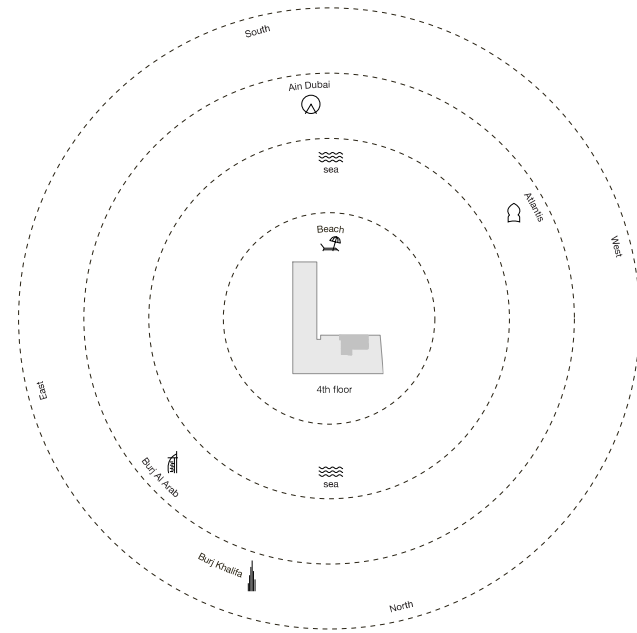


Three Bedroom Type A - Floor Plan

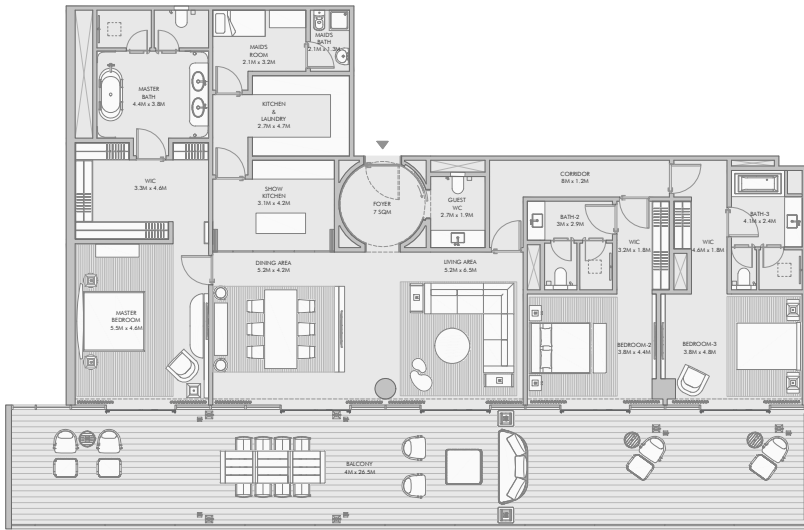


Three Bedroom Type A - Unit Details

Unit Numbers	Unit Area	Balcony Area	Total Area
A-402	257.53 m ² (2,772 sqft)	114.33 m ² (1,231 sqft)	371.86 m ² (4,003 sqft)

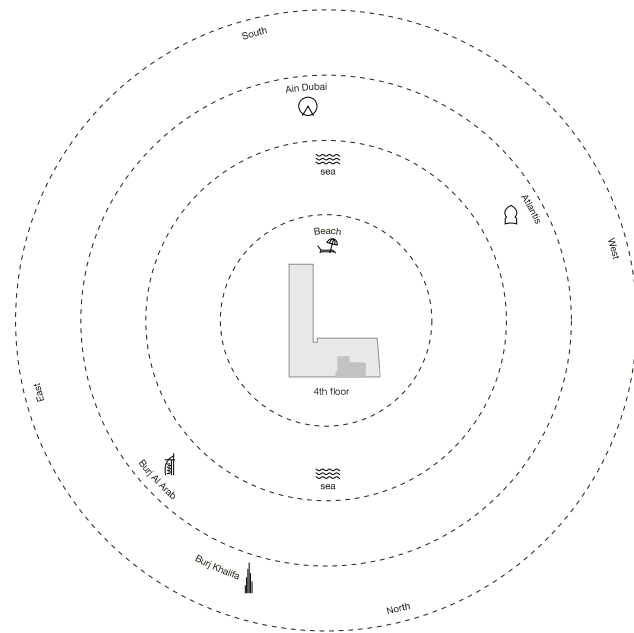


Three Bedroom Type B - Floor Plan



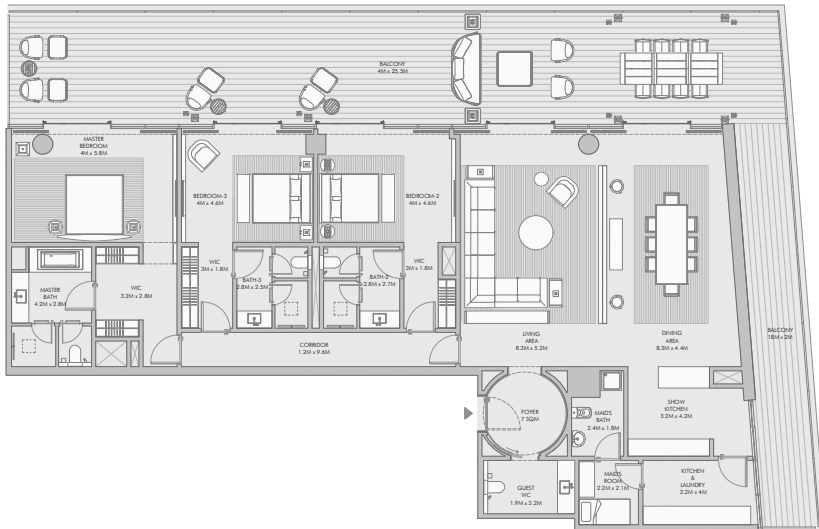
Three Bedroom Type B - Unit Details

Unit Numbers	Unit Area	Balcony Area	Total Area
A-401	262,70 m ² (2,828 sqft)	114,55 m ² (1,233 sqft)	377,25 m ² (4,061 sqft)



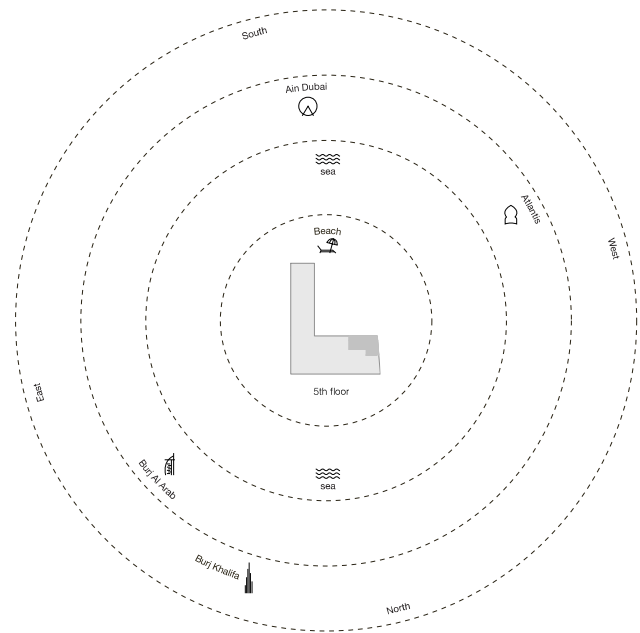
*Measurements are indicative 'finish to finish' in Metric & Imperial including construction tolerance. **All unit dimensions may vary from brochure, and unit types/dimensions may exist as mirrored versions. ***All images used are for illustrative purposes only. ****As stated otherwise, all fittings and minor decorative items shown are for illustrative purposes only. *****The developer reserves the right to make alterations, at its sole discretion, without any liability whatsoever up to the final 'as built' status.

Three Bedroom Type C - Floor Plan



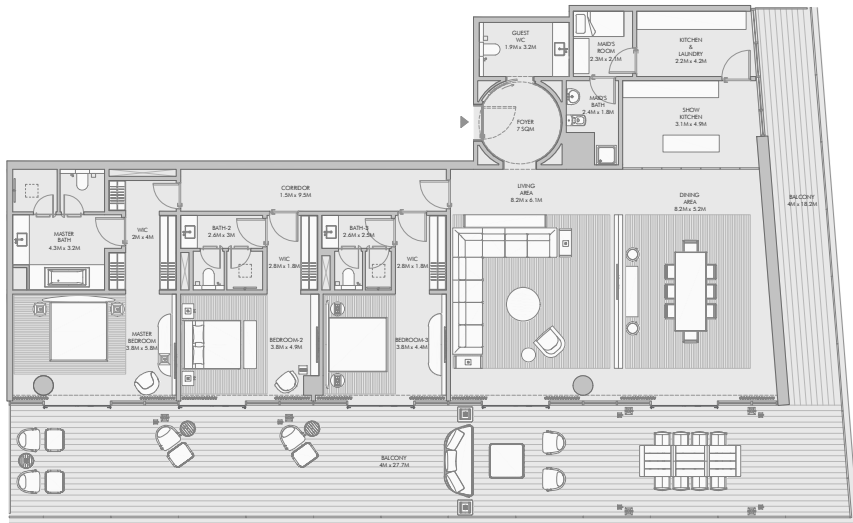
Three Bedroom Type C - Unit Details

Unit Numbers	Unit Area	Balcony Area	Total Area
A-504	269,92 m ² (2,905 sqft)	138,33 m ² (1,489 sqft)	408,25 m ² (4,394 sqft)



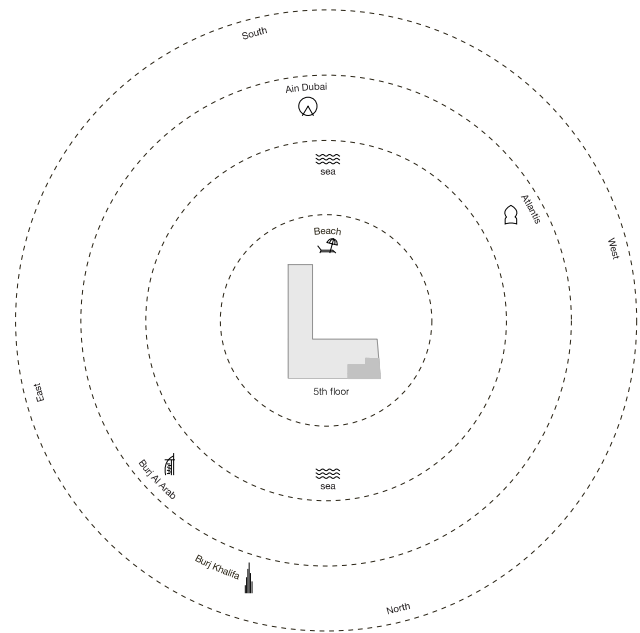
*Measurements are indicative 'finish to finish' in Metric & Imperial including construction tolerance. **Final dimensions may vary from brochure, and unit types/line may exist as enclosed versions. **All images used are for illustrative purposes only. **If it is stated otherwise, all fittings and interior decorative items shown are for illustrative purposes only. **The developer reserves the right to make alterations, at its sole discretion, without any liability whatsoever up to the final 'as built' status.

Three Bedroom Type D - Floor Plan



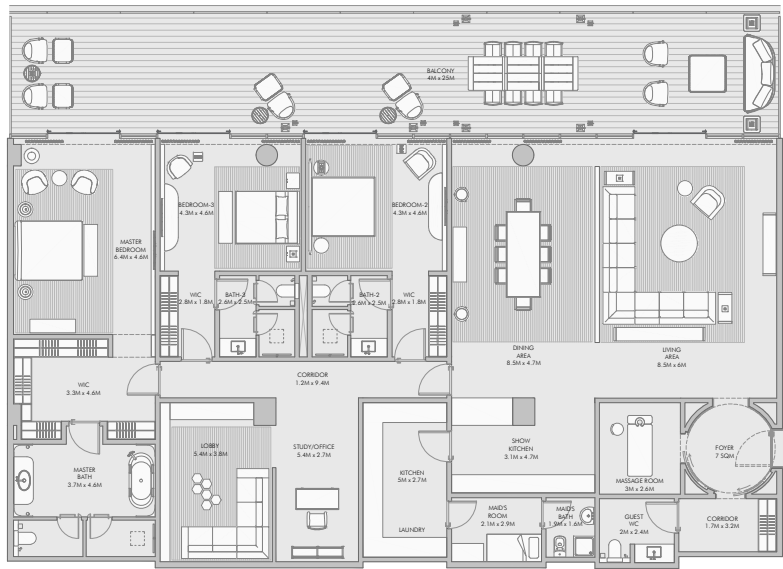
Three Bedroom Type D - Unit Details

Unit Numbers	Unit Area	Balcony Area	Total Area
A-503	283,73 m ² (3,054 sqft)	148,47 m ² (1,598 sqft)	432,20 m ² (4,652 sqft)



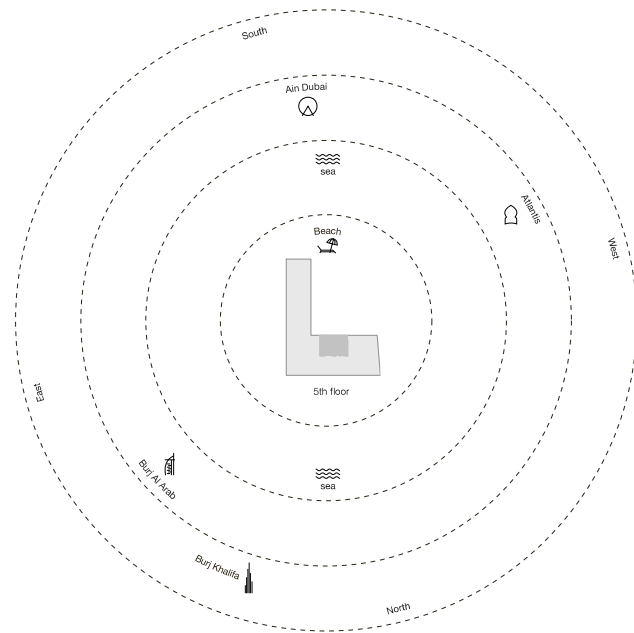
*Measurements are indicative 'finish to finish' in Metric & Imperial including construction tolerance. **Final unit dimensions may vary from brochure, and unit types/line may exist as mirrored versions. **All images used are for illustrative purposes only. ***If it is stated otherwise, all fittings and interior decorative items shown are for illustrative purposes only. ****The developer reserves the right to make alterations, at its sole discretion, without any liability whatsoever up to the final 'as built' status.

Three Bedroom Type E - Floor Plan



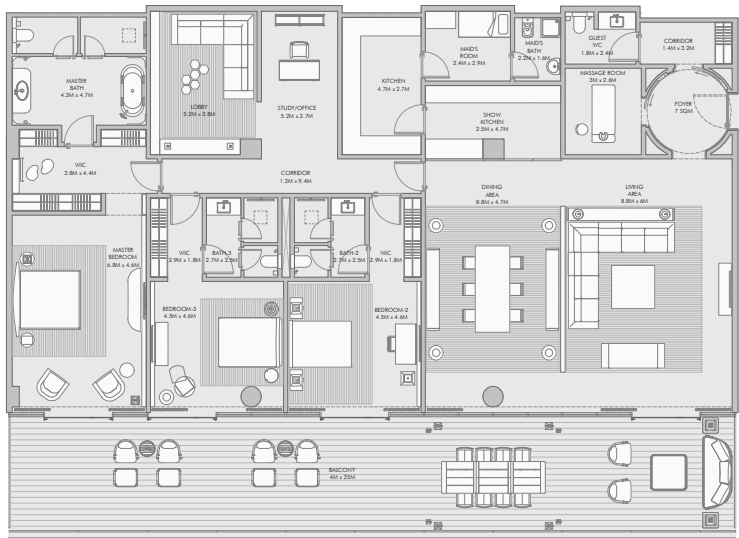
Three Bedroom Type E - Unit Details

Unit Numbers	Unit Area	Balcony Area	Total Area
A-502	350,91 m ² (3,777 sqft)	101,09 m ² (1,088 sqft)	452,00 m ² (4,865 sqft)



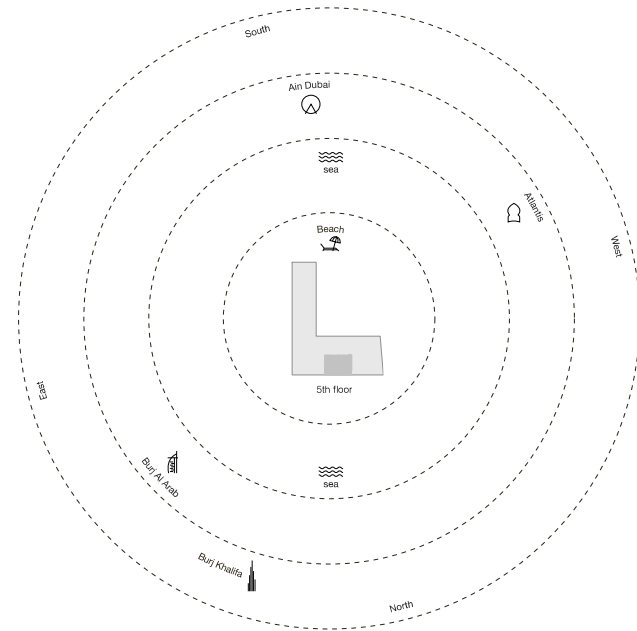
*Measurements are indicative. Please refer to the 'As Built' drawings for final dimensions. All dimensions may vary from brochure, and unit types/areas may vary as per the latest version. All images used are for illustrative purposes only. All rights reserved. All fittings and minor decorative items shown are for illustrative purposes only. The developer reserves the right to make alterations, at its sole discretion, without any liability whatsoever up to the final 'as built' status.

Three Bedroom Type F - Floor Plan



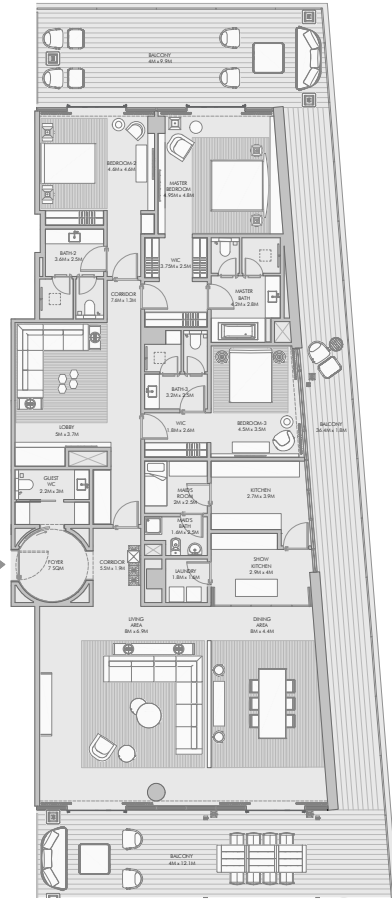
Three Bedroom Type F - Unit Details

Unit Numbers	Unit Area	Balcony Area	Total Area
A-501	351,51 m ² (3,784 sqft)	101,10 m ² (1,088 sqft)	452,61 m ² (4,872 sqft)



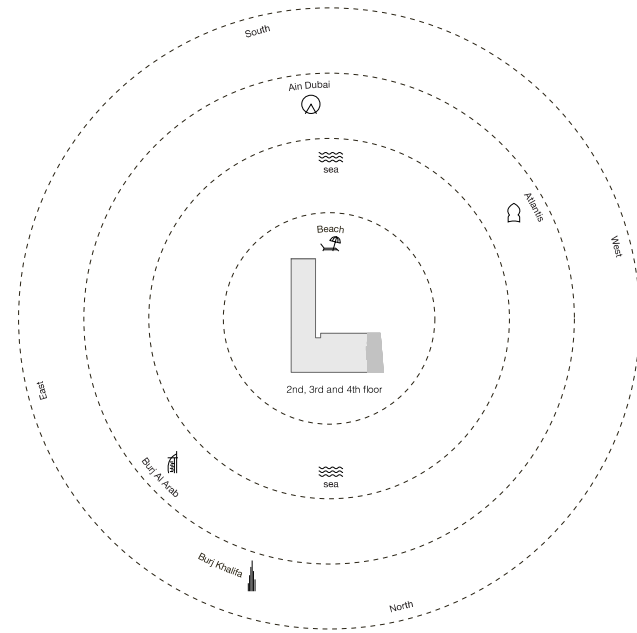
*All measurements are indicative 'finish to finish' in Metric & Imperial including construction tolerance. All unit dimensions may vary from brochure, and unit types/line may exist as mirrored versions. All images used are for illustrative purposes only. If it is stated otherwise, all fittings and minor decorative items shown are for illustrative purposes only. © The developer reserves the right to make alterations, at its absolute discretion, without any liability whatsoever up to the final 'as built' status.

Three Bedroom Type G - Floor Plan



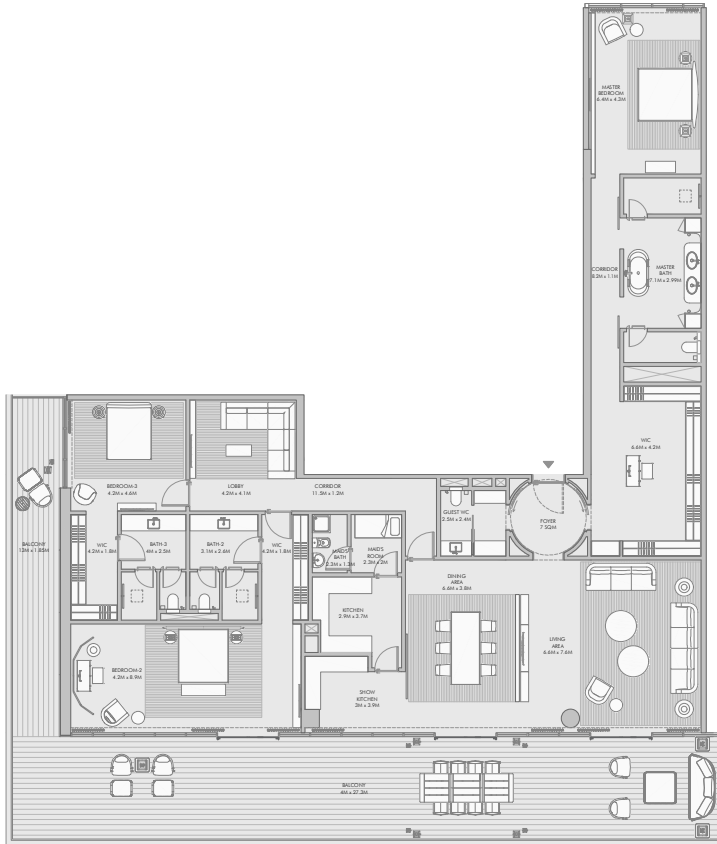
Three Bedroom Type G - Unit Details

Unit Numbers	Unit Area	Balcony Area	Total Area
A-203, A-303, A-403	314.14 m ² (3,381 sqft)	161.89 m ² (1,743 sqft)	476.02 m ² (5,124 sqft)



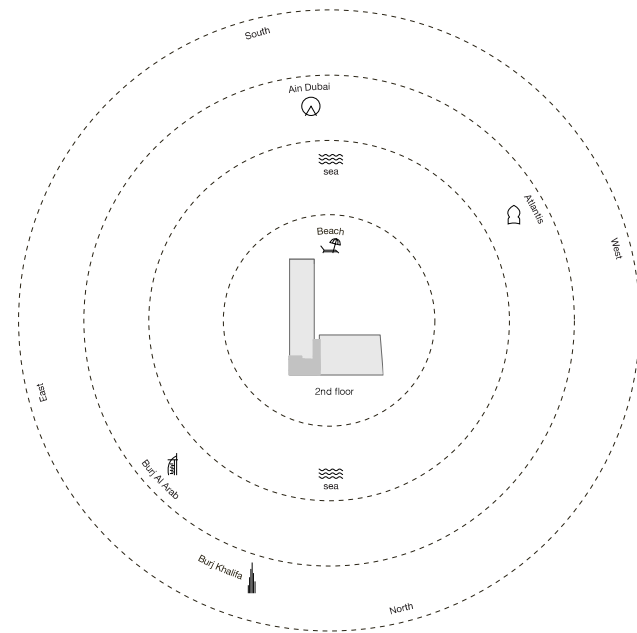
*All measurements are indicative 'finish to finish' in Metric & Imperial including construction tolerance. **All unit dimensions may vary from brochure, and unit types/line may exist as mirrored versions. ***All images used are for illustrative purposes only. ****If it is stated otherwise, all fittings and interior decorative items shown are for illustrative purposes only. *****The developer reserves the right to make alterations, at its sole discretion, without any liability whatsoever up to the final 'as built' status.

Three Bedroom Type H - Floor Plan



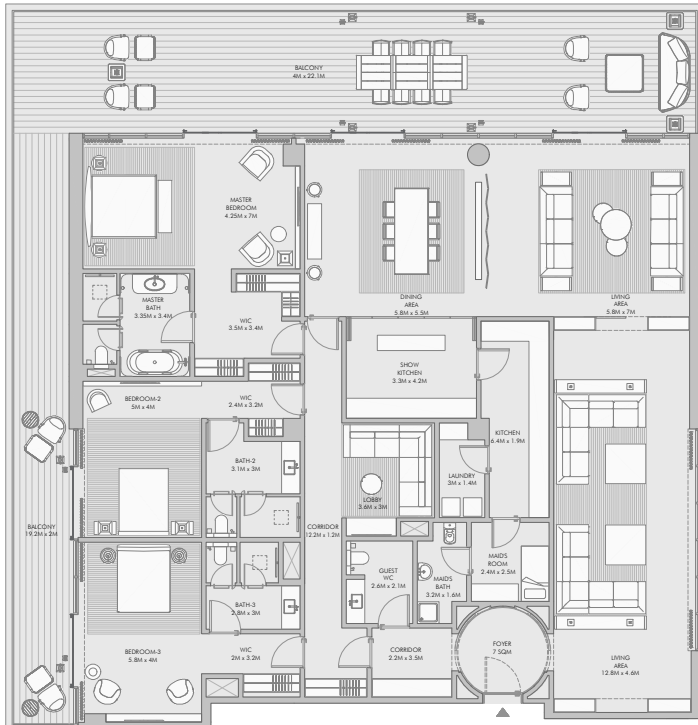
Three Bedroom Type H - Unit Details

Unit Numbers	Unit Area	Balcony Area	Total Area
B-201	352.15 m ² (3,791 sqft)	138.65 m ² (1,492 sqft)	490.80 m ² (5,283 sqft)



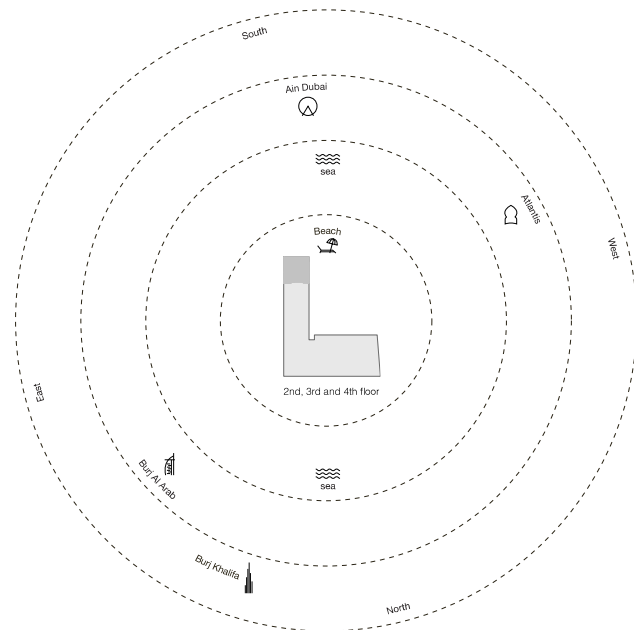
*Measurements are indicative 'finish to finish' in Metric & Imperial including construction tolerance. All floor dimensions may vary from brochure, and unit types/area may vary as enclosed versions. All images used are for illustrative purposes only. All areas stated otherwise, all fittings and interior decorative items shown are for illustrative purposes only. The developer reserves the right to make alterations, at its sole & sole discretion, without any liability whatsoever up to the final 'as built' status.

Three Bedroom Type I - Floor Plan



Three Bedroom Type I - Unit Details

Unit Numbers	Unit Area	Balcony Area	Total Area
C-202, C-302, C-402	372.81 m ² (4,013 sqft)	128.15 Sqm (1,379 Sqft)	500.96 Sqm (5,392 Sqft)



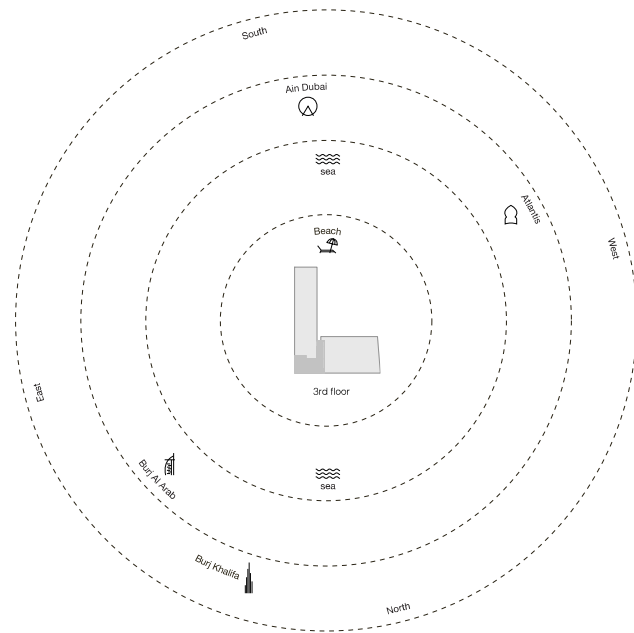
*Measurements are indicative. "Finish to Finish" in Metric. All figures excluding construction tolerance. All floor dimensions may vary from brochure, and unit types/line may exist as mirrored versions. All images used are for illustrative purposes only. All items are stated otherwise, all fittings and interior decorative items shown are for illustrative purposes only. The developer reserves the right to make alterations, at its sole discretion, without any liability whatsoever up to the final "as built" status.

Three Bedroom Type J - Floor Plan



Three Bedroom Type J - Unit Details

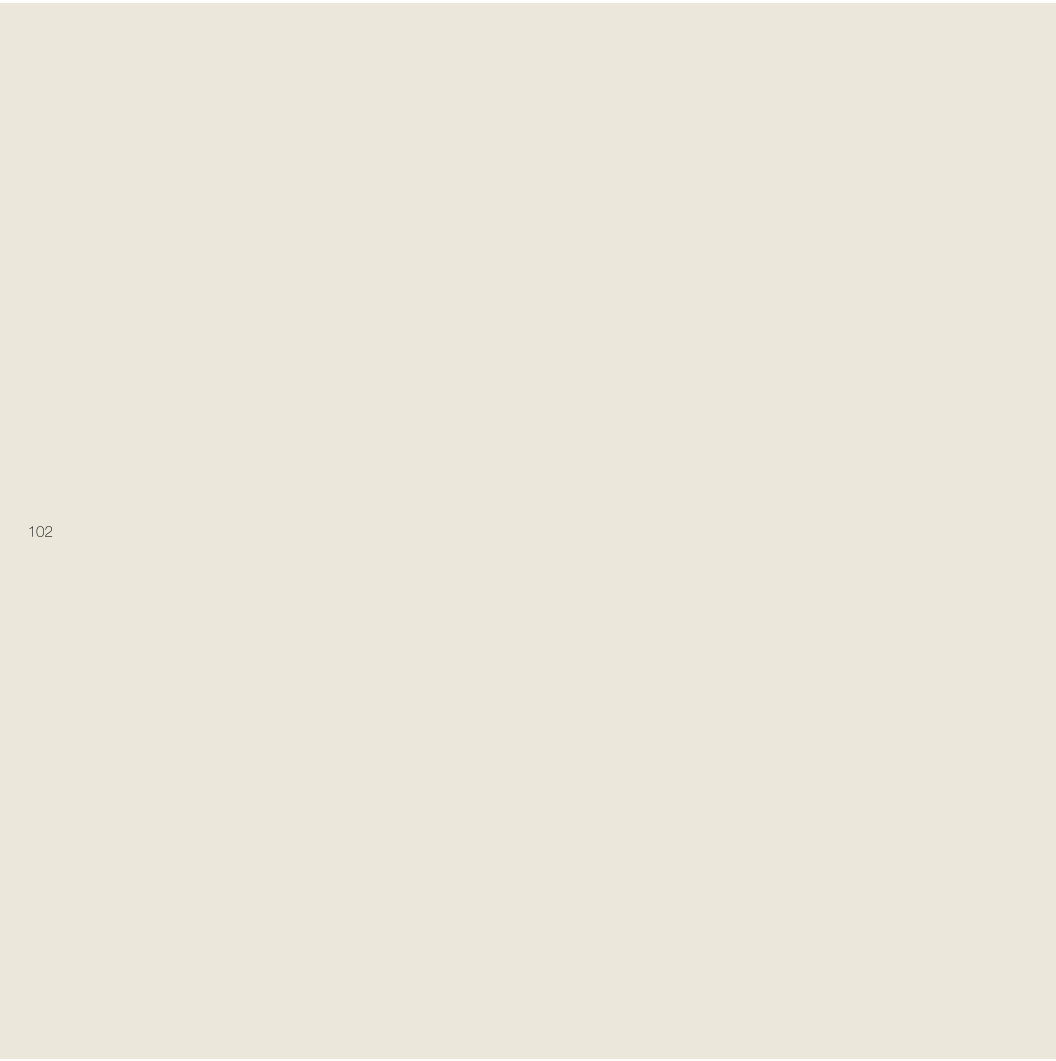
Unit Numbers	Unit Area	Balcony Area	Total Area
B-301	388,51 m ² (4,193 sqft)	148,42 m ² (1,597 sqft)	537,93 m ² (5,790 sqft)



*All measurements are indicative 'finish to finish' in Metric & Imperial including construction tolerance. All unit dimensions may vary from brochure, and unit types & areas may exist as mirrored versions. All images used are for illustrative purposes only. All areas stated otherwise, all fittings and interior decorative items shown are for illustrative purposes only. The developer reserves the right to make alterations, at its sole discretion, without any liability whatsoever up to the final 'as built' status.









Regal luxury *with four bedrooms*

This luxurious retreat offers every guest stunning ocean views, top-of-the-line amenities, and a lifestyle of pure indulgence.

The double-sized gourmet kitchen is a chef's dream, equipped with the latest appliances and finishes.

Each exquisitely fitted bedroom has its own en suite bathroom and private balcony. But the real luxury lies outdoors where a private pool overlooks the sandy beach and resort-style amenities.

All four-bedroom residences come with a €50,000 certificate for Armani/Casa furniture.



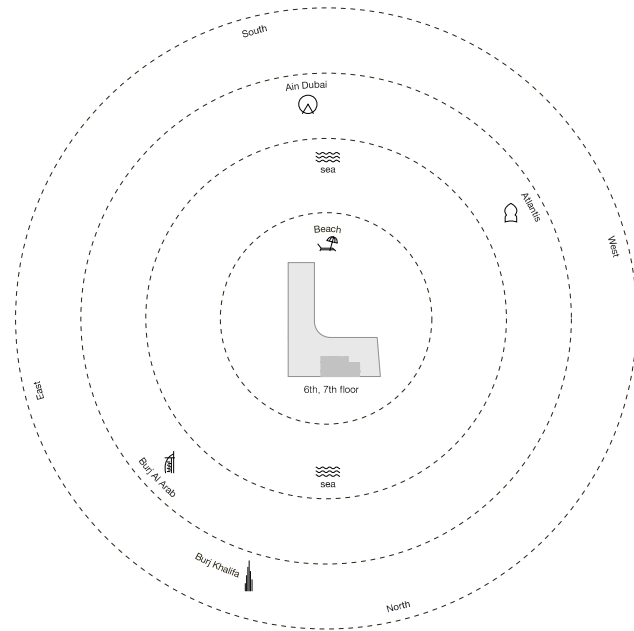


Four Bedroom Type A - Unit Plan



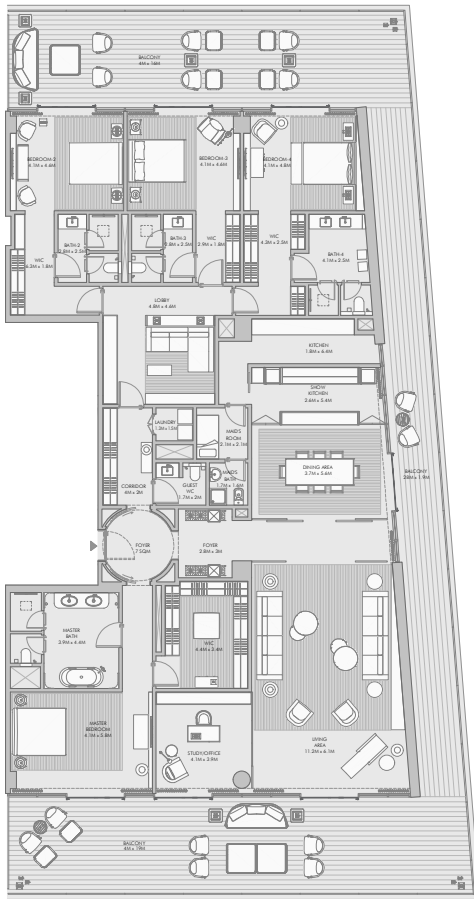
Four Bedroom Type A - Unit Details

Unit Numbers	Unit Area	Balcony Area	Total Area
A-601, A-701	443,04 m ² (4,769 sqft)	144,36 m ² (1,554 sqft)	587,40 m ² (6,323 sqft)



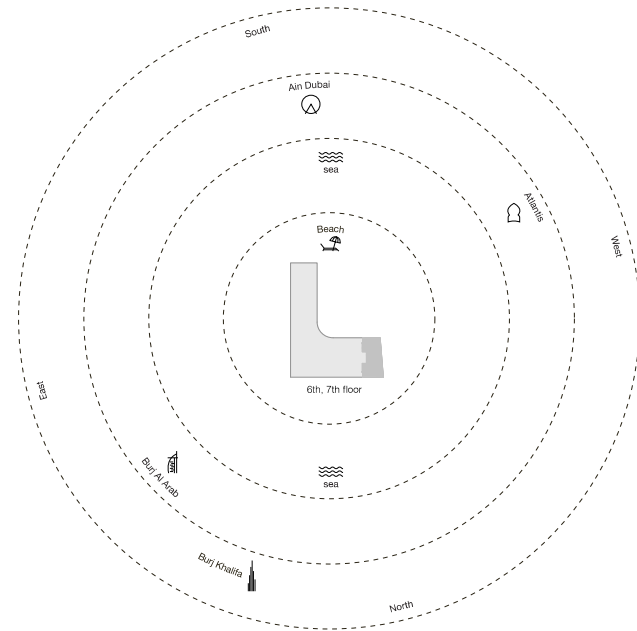
*All measurements are indicative 'finish to finish' in Metric & Imperial including construction tolerance. **All floor dimensions may vary from brochure, and unit types/dimensions may vary as introduced versions. ***All images used are for illustrative purposes only. ****As stated otherwise, all fittings and minor decorative items shown are for illustrative purposes only. *****The developer reserves the right to make alterations, at its sole & sole discretion, without any liability whatsoever up to the final 'as built' status.

Four Bedroom Type B - Unit Plan



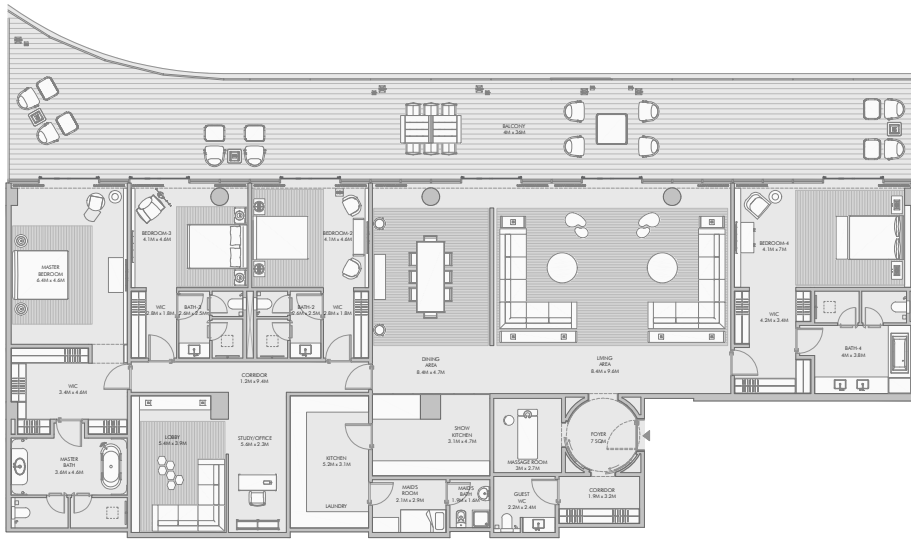
Four Bedroom Type B - Unit Details

Unit Numbers	Unit Area	Balcony Area	Total Area
A-603, A-703	395,05 m ² (4,252 sqft)	200,05 m ² (2,154 sqft)	595,10 m ² (6,406 sqft)



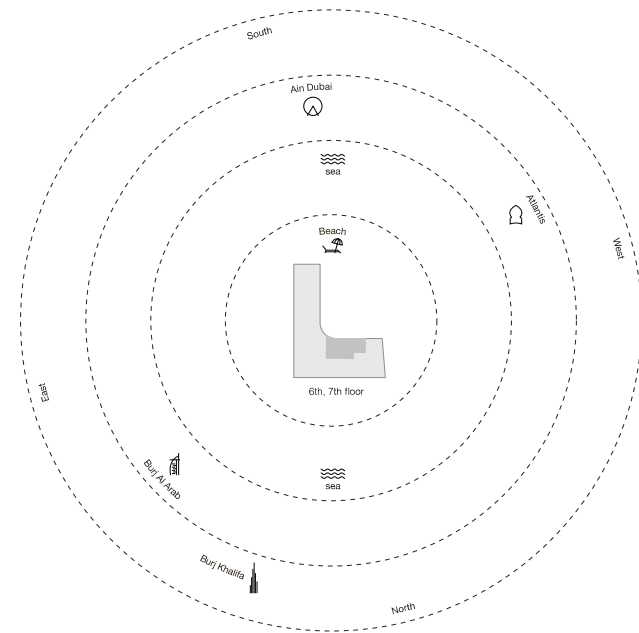
*Measurements are indicative 'finish to finish' in Metric & Imperial including construction tolerance. **All unit dimensions may vary from brochure, and unit types/drawings may exist as amended versions. ***All images used are for illustrative purposes only. ****If it is stated otherwise, all fittings and interior decorative items shown are for illustrative purposes only. *****The developer reserves the right to make alterations, at its sole & sole discretion, without any liability whatsoever up to the final 'as built' status.

Four Bedroom Type C - Unit Plan



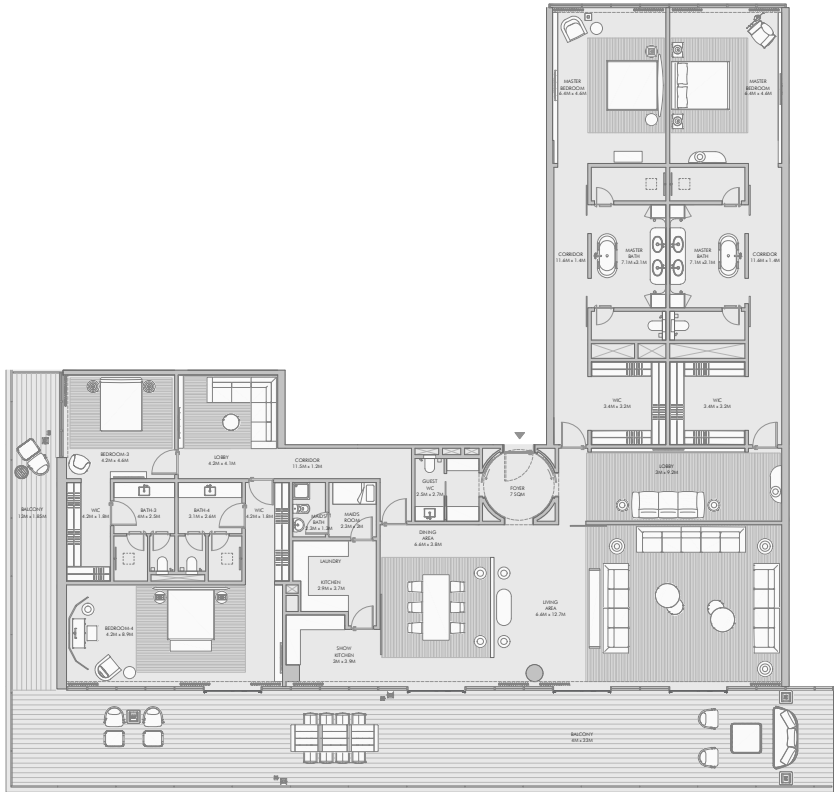
Four Bedroom Type C - Unit Details

Unit Numbers	Unit Area	Balcony Area	Total Area
A-602, A-702	444,10 m ² (4,780 sqft)	151,98 m ² (1,636 sqft)	596,08 m ² (6,416 sqft)



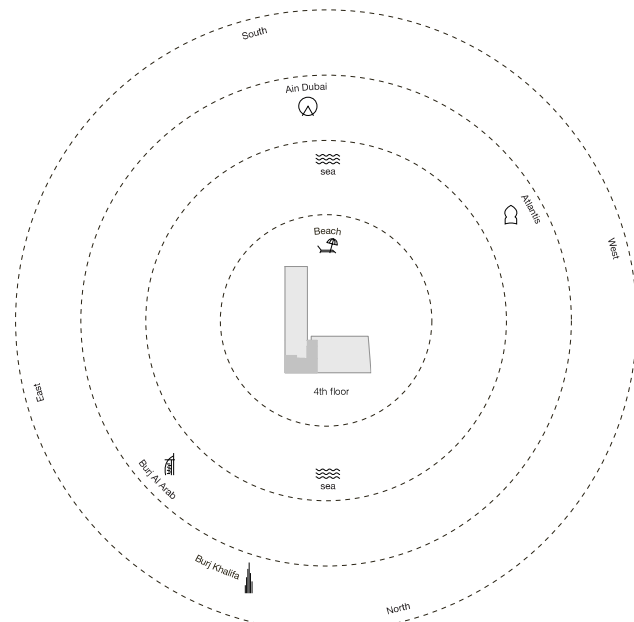
*All measurements are indicative. "Finish to Finish" in Metric & Imperial including construction tolerance. **All unit dimensions may vary from brochure, and unit types/line may exist as mirrored versions. **All images used are for illustrative purposes only. **If it is stated otherwise, all fittings and interior decorative items shown are for illustrative purposes only. **The developer reserves the right to make alterations, at its sole & sole discretion, without any liability whatsoever up to the final "as built" status.

Four Bedroom Type D - Unit Plan



Four Bedroom Type D - Unit Details

Unit Numbers	Unit Area	Balcony Area	Total Area
B-401	499,37 m ² (5,375 sqft)	168,65 m ² (1,816 sqft)	668,02 m ² (7,191 sqft)



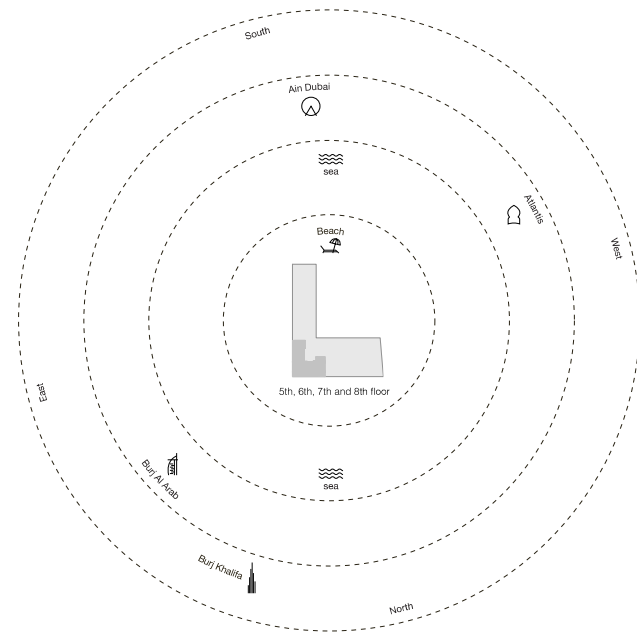
*All measurements are indicative. "Finish to Finish" in Metric. All dimensions excluding construction tolerance. All unit dimensions may vary from brochure, and unit types/line may exist as mirrored versions. All images used are for illustrative purposes only. All fixtures stated otherwise, all fittings and interior decorative items shown are for illustrative purposes only. The developer reserves the right to make alterations, at its sole discretion, without any liability whatsoever up to the final "as built" status.

Four Bedroom Type E - Unit Plan



Four Bedroom Type E - Unit Details

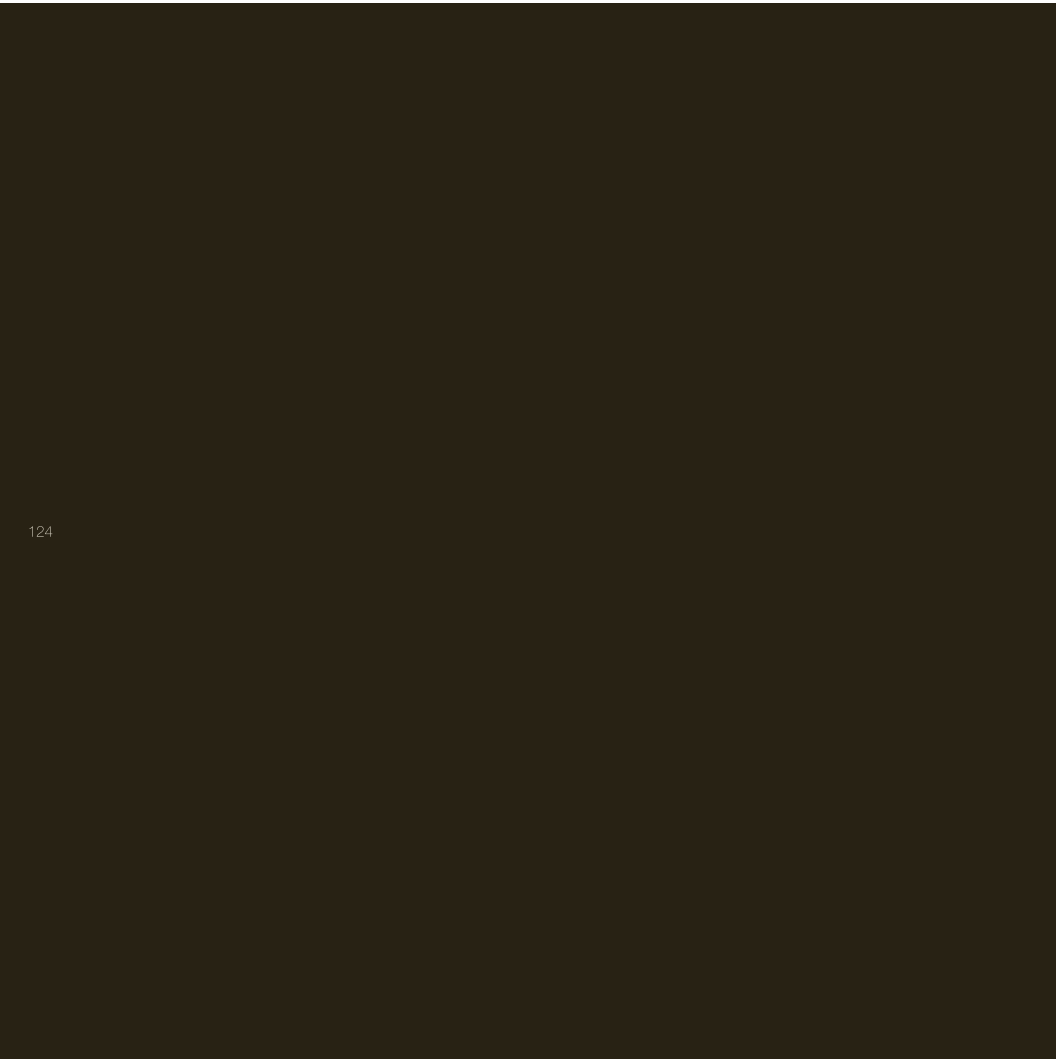
Unit Numbers	Unit Area	Balcony Area	Total Area
B-601, B-601, B-701, B-801	508,54 m ² (5,474 sqft)	184,42 m ² (1,985 sqft)	692,92 m ² (7,459 sqft)



*Measurements are indicative. "Furnish to Finish" in Metric. All dimensions excluding construction tolerance. All unit dimensions may vary from brochure, and unit types/line may vary as enclosed versions. All images used are for illustrative purposes only. All areas stated otherwise, all fittings and interior decorative items shown are for illustrative purposes only. The developer reserves the right to make alterations, at its sole discretion, without any liability whatsoever up to the final "as built" status.









Ultimate luxury *with five bedrooms*

Enter a world of elegance and sophistication at the five-bedroom residences at Armani Beach Residences at Palm Jumeirah.

Each impeccably appointed residence affords premium views of the sea, the sky and Dubai's astonishing cityscape, which can be enjoyed from the comfort of extended terraces. Owners may choose existing specifications for the interiors or enjoy the opportunity to create a bespoke interior scheme in partnership with Armani/Casa.

All five-bedroom residences feature generously proportioned living spaces, an extensive family area that acts as a transition to the bedrooms and five parking spaces.

All five-bedroom residences come with a €60,000 certificate for Armani/Casa furniture.



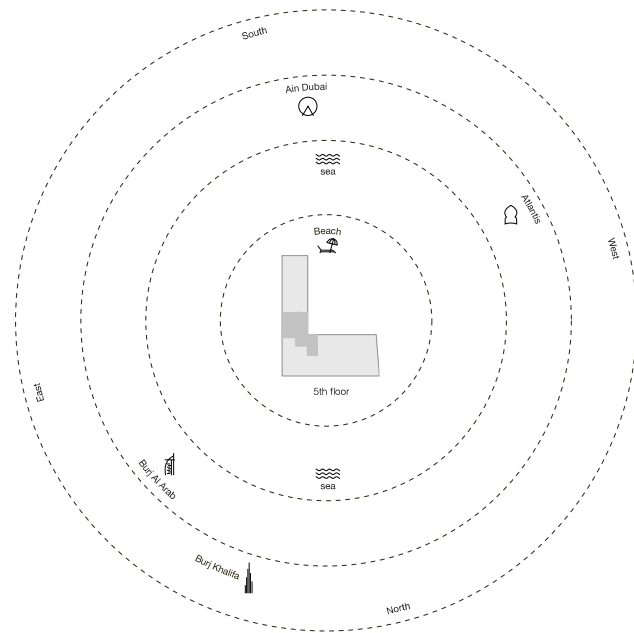


Five Bedroom Type A - Unit Plan



Five Bedroom Type A - Unit Details

Unit Numbers	Unit Area	Balcony Area	Total Area
B-502	625,20 m ² (6,730 sqft)	78,20 m ² (841 sqft)	703,40 m ² (7,571 sqft)



132

133

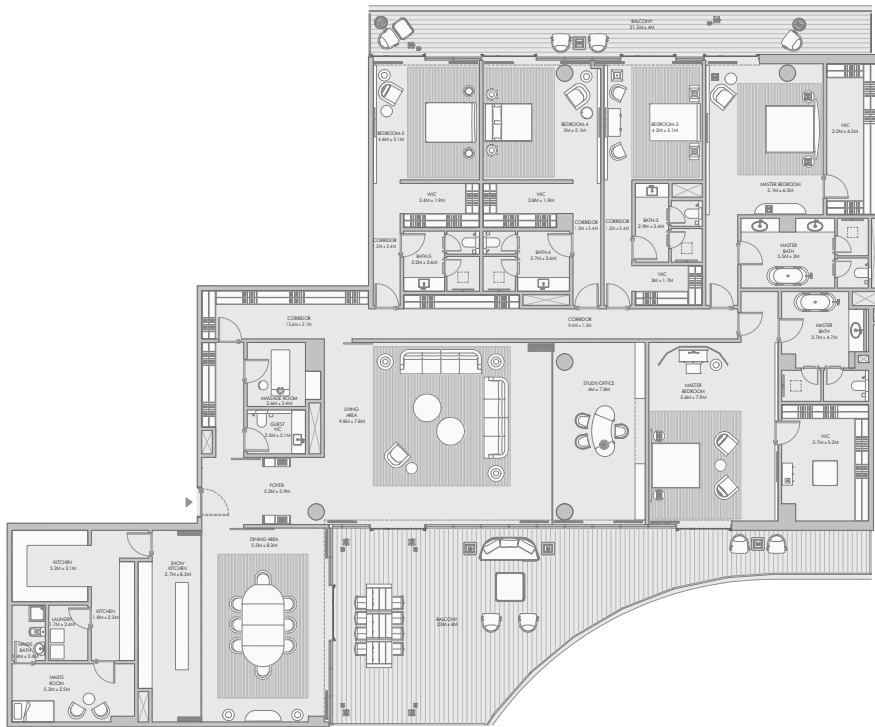
◀ North

*Measurements are indicative 'finish to finish' in Metric & Imperial including construction tolerance. All unit dimensions may vary from brochure, and unit types/dimensions may exist as mirrored versions. All images used are for illustrative purposes only. All rights reserved. All fittings and interior decorative items shown are for illustrative purposes only. The developer reserves the right to make alterations, at its sole discretion, without any liability whatsoever up to the final 'as built' status.



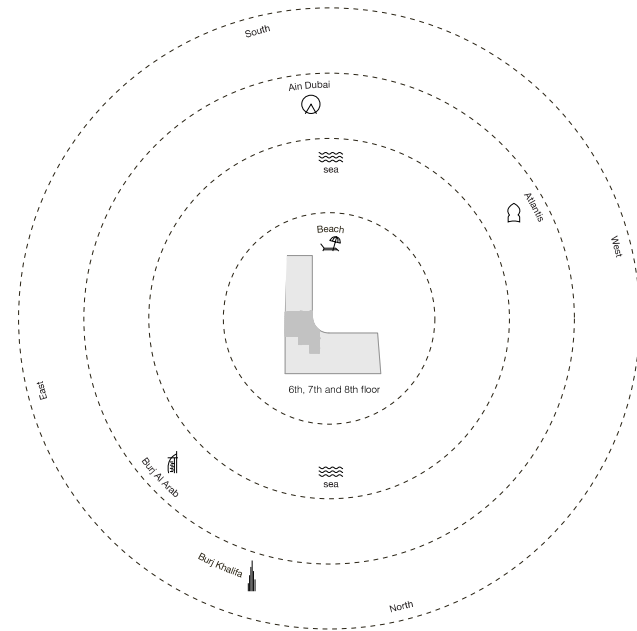


Five Bedroom Type B - Unit Plan



Five Bedroom Type B - Unit Details

Unit Numbers	Unit Area	Balcony Area	Total Area
B-602, B-702, B-802	625.55 m ² (6,733 sqft)	161.52 m ² (1,739 sqft)	787.07 m ² (8,472 sqft)



138

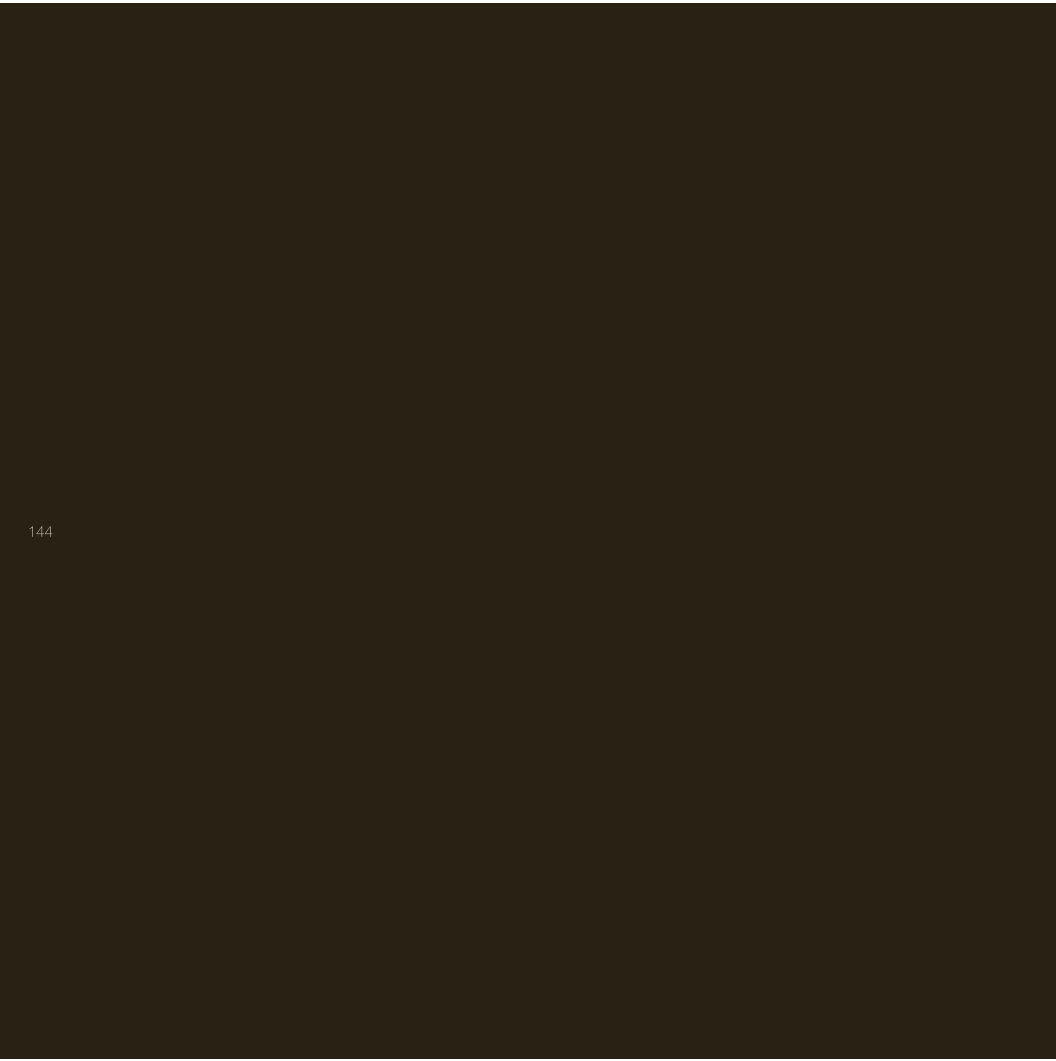
139

◀ North

*Measurements are indicative 'finish to finish' in Metric & Imperial including construction tolerance. All unit dimensions may vary from brochure, and unit types/dimensions may exist as mirrored versions. All images used are for illustrative purposes only. All prices stated otherwise, all fittings and minor decorative items shown are for illustrative purposes only. The developer reserves the right to make alterations, at its sole discretion, without any liability whatsoever up to the final 'as built' status.









The pinnacle of luxury *at the Penthouses*

Enjoy a high-class lifestyle at the Penthouses at Armani Beach Residences at Palm Jumeirah.

A highlight of this exceptional residence is the large private pool, from which owners can enjoy incredible ocean and city views.

All penthouses contain beautifully designed and flexible layouts, generous family areas and five parking spaces.

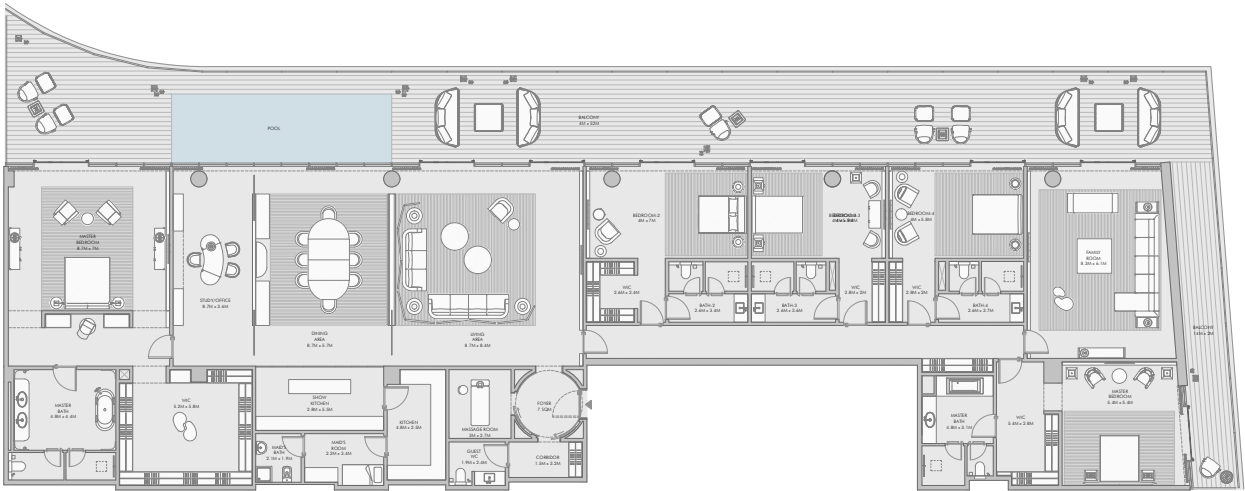
All Penthouses come with a €70,000 certificate for Armani/Casa furniture.





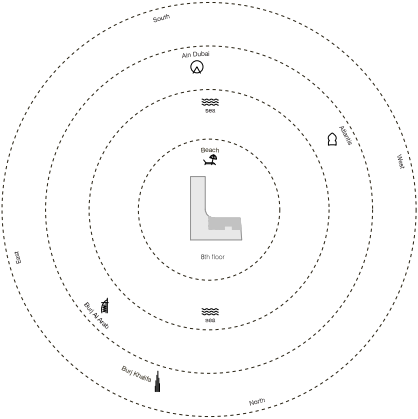
Five Bedroom Type Penthouse 1 - Unit Plan

Five Bedroom Type Penthouse 1 - Unit Plan



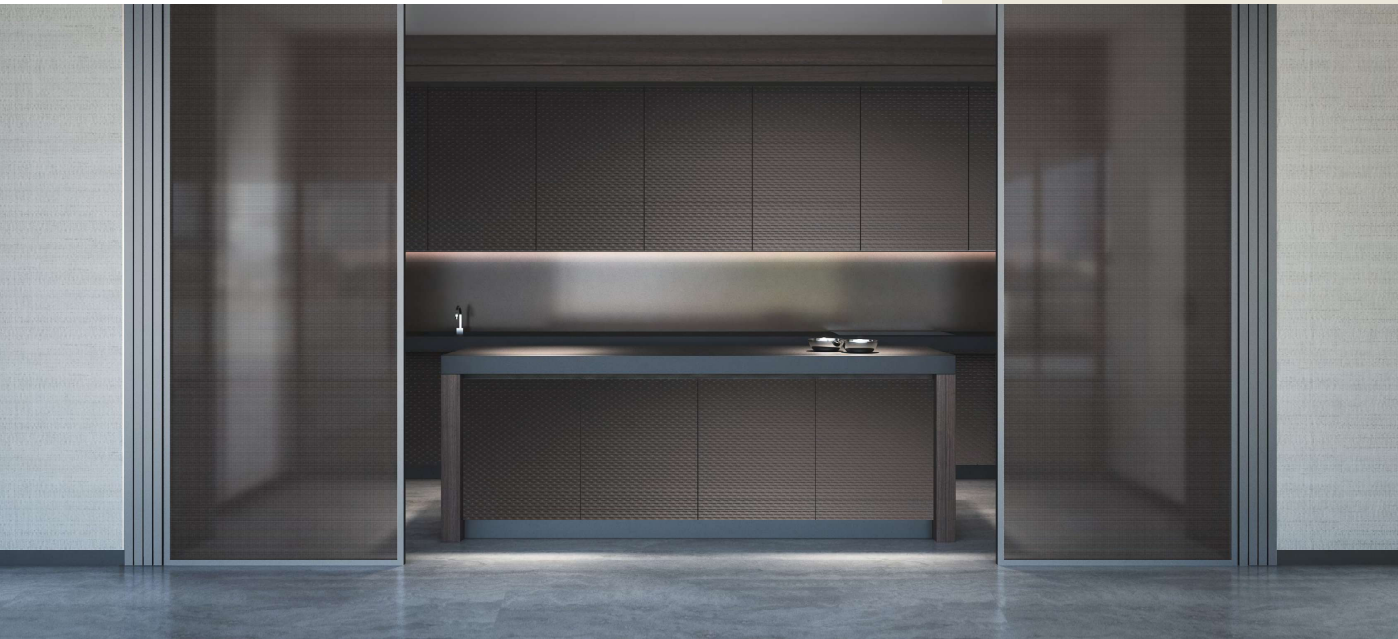
Five Bedroom Type Penthouse 1 - Unit Details

Unit Numbers	Unit Area	Balcony Area	Total Area
A-412	655.42 m ² (7,040 sqft)	247.29 m ² (2,661 sqft)	902.71 m ² (9,701 sqft)



*Measurements are inclusive, front to back. All figures are approximate and may vary from actual. All dimensions may vary from drawings and unit layout may vary as internal partitions. All figures used are for 8th floor penthouse only. All figures are approximate. All figures are approximate and may vary from actual. All dimensions may vary from drawings and unit layout may vary as internal partitions. All figures used are for 8th floor penthouse only. All figures are approximate.





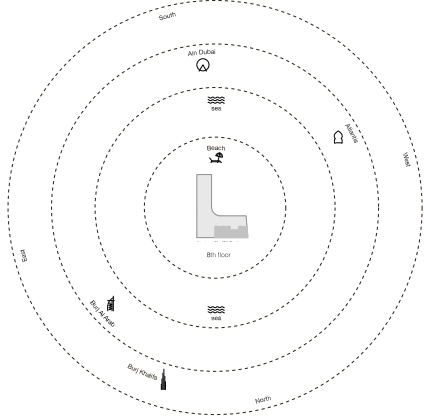
Five Bedroom Type Penthouse 2 - Unit Plan

Five Bedroom Type Penthouse 2 - Unit Plan



Five Bedroom Type Penthouse 2 - Unit Details

Unit Numbers	Unit Area	Balcony Area	Total Area
A-451	647.23 m ² (6,973 sqft)	255.25 m ² (2,691 sqft)	902.48 m ² (9,664 sqft)



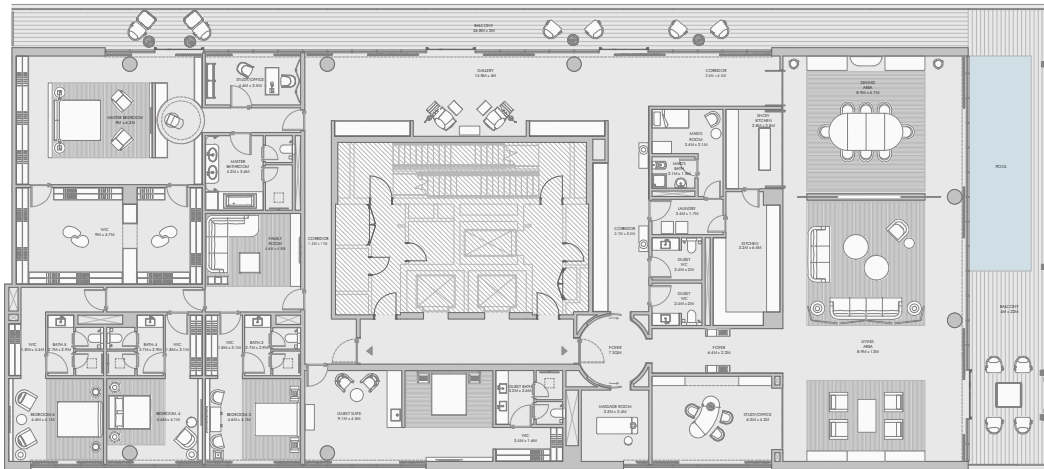
*Measurements are inclusive from to finish in height. **Typical wall and ceiling construction. ***Dimensions may vary from structure and Unit Layouts may vary as internal partitions. ****Floor level is 10.48 meters above G.L. and 3.30 meters above ground level. *****Typical wall and ceiling construction. ****Dimensions may vary from structure and Unit Layouts may vary as internal partitions. ****Floor level is 10.48 meters above G.L. and 3.30 meters above ground level. *****Typical wall and ceiling construction.





Five Bedroom Type Penthouse 3 - Unit Plan

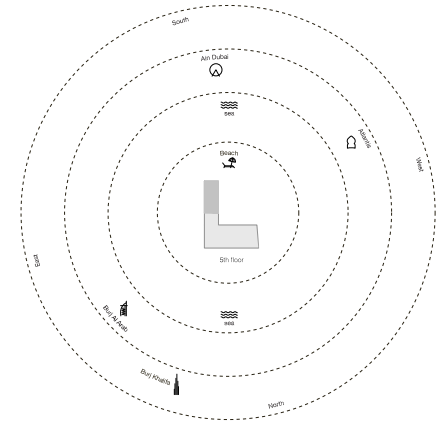
Five Bedroom Type Penthouse 3 - Unit Plan



North

Five Bedroom Type Penthouse 3 - Unit Details

Unit Numbers	Unit Area	Balcony Area	Total Area
C201	794.25 m ² (8,552 sqft)	155.34 m ² (1,695 sqft)	973.69 m ² (10,547 sqft)



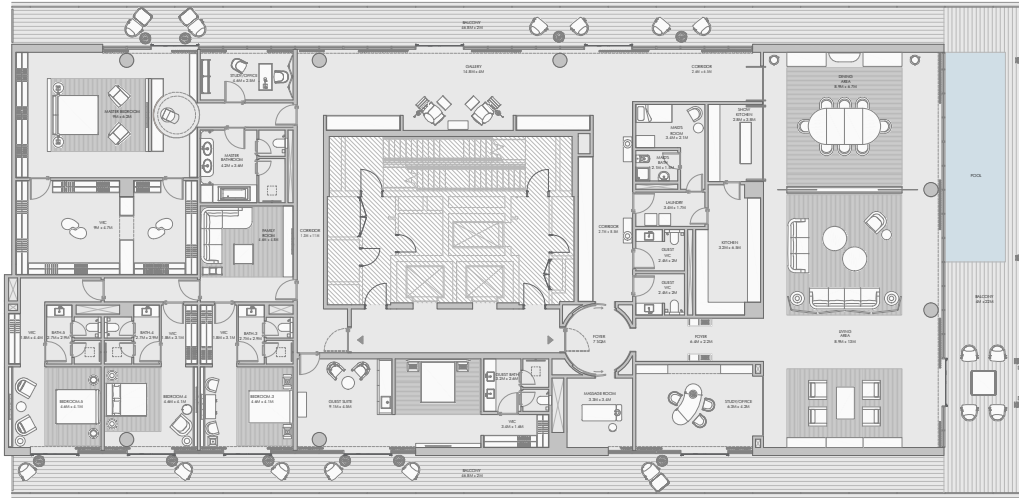
*Measurements are inclusive from face to face of walls. All dimensions are approximate. All dimensions may vary from structure and unit layout may vary as internal partitions. All figures are for illustrative purposes only. All dimensions are approximate. All dimensions may vary from structure and unit layout may vary as internal partitions. All figures are for illustrative purposes only. All dimensions are approximate. All dimensions may vary from structure and unit layout may vary as internal partitions. All figures are for illustrative purposes only.





Five Bedroom Type Penthouse 4 - Unit Plan

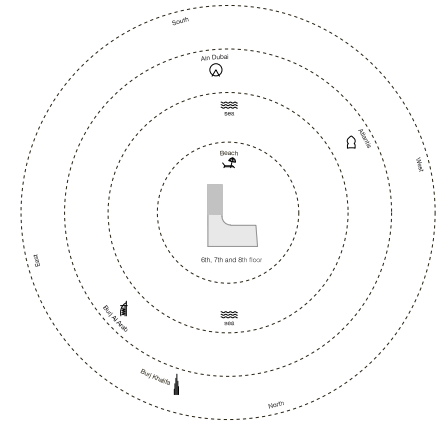
Five Bedroom Type Penthouse 4 - Unit Plan



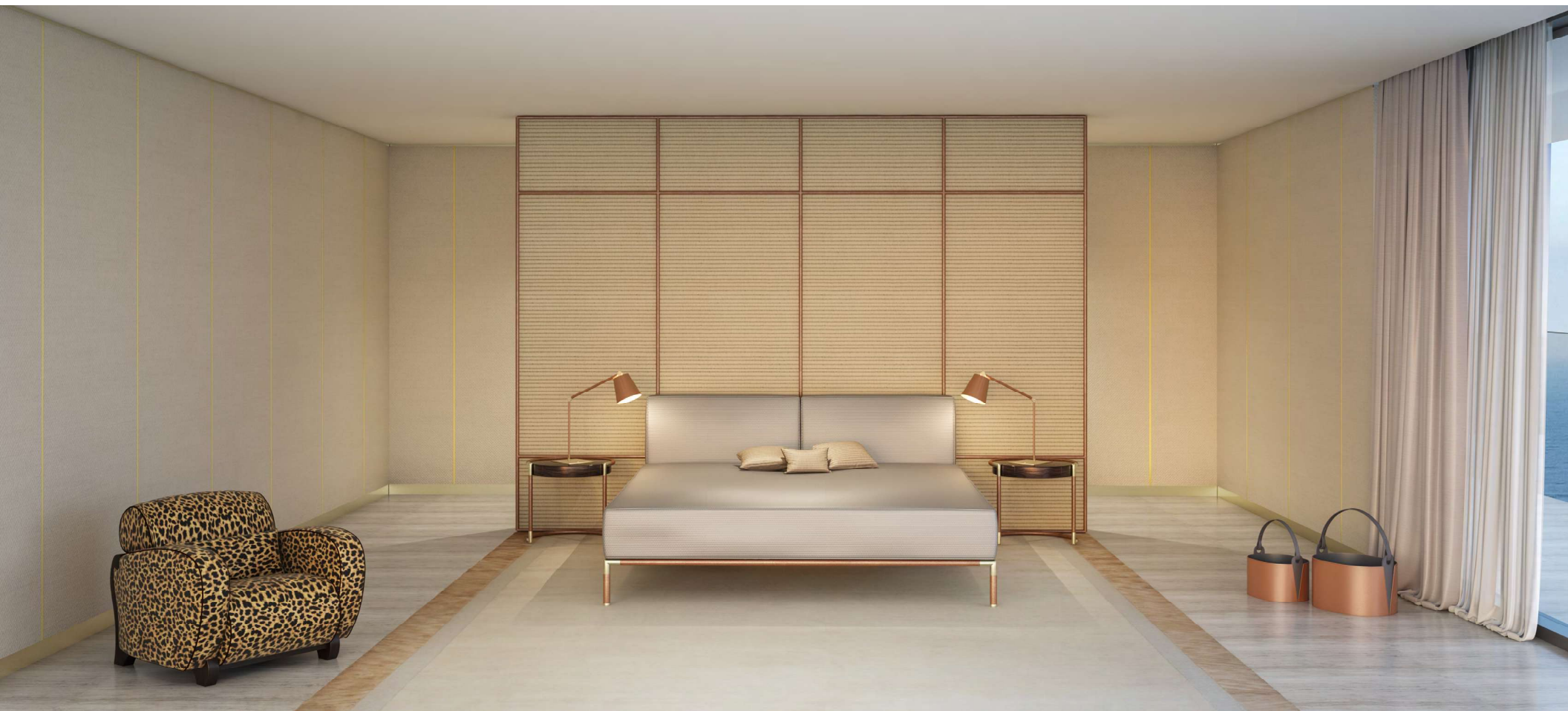
North

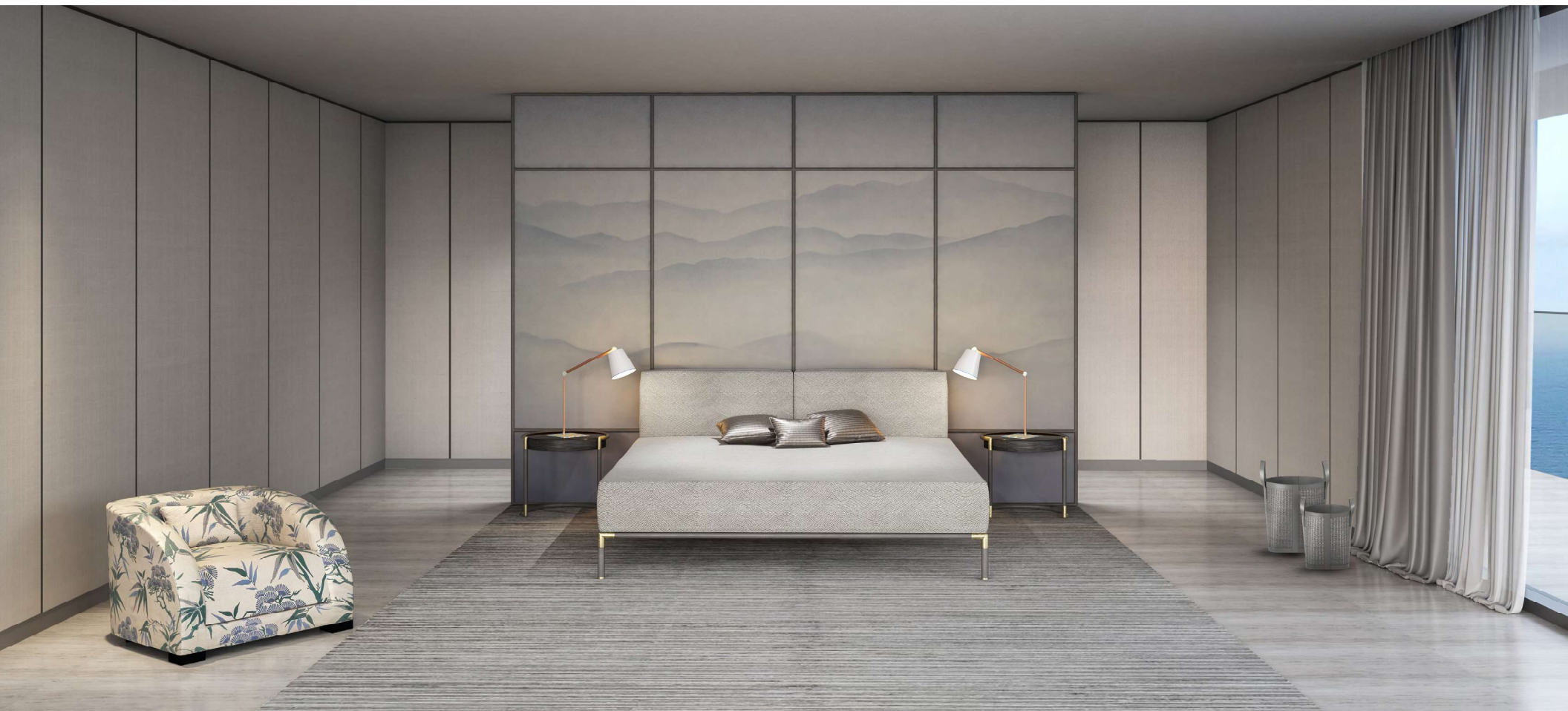
Five Bedroom Type Penthouse 4 - Unit Details

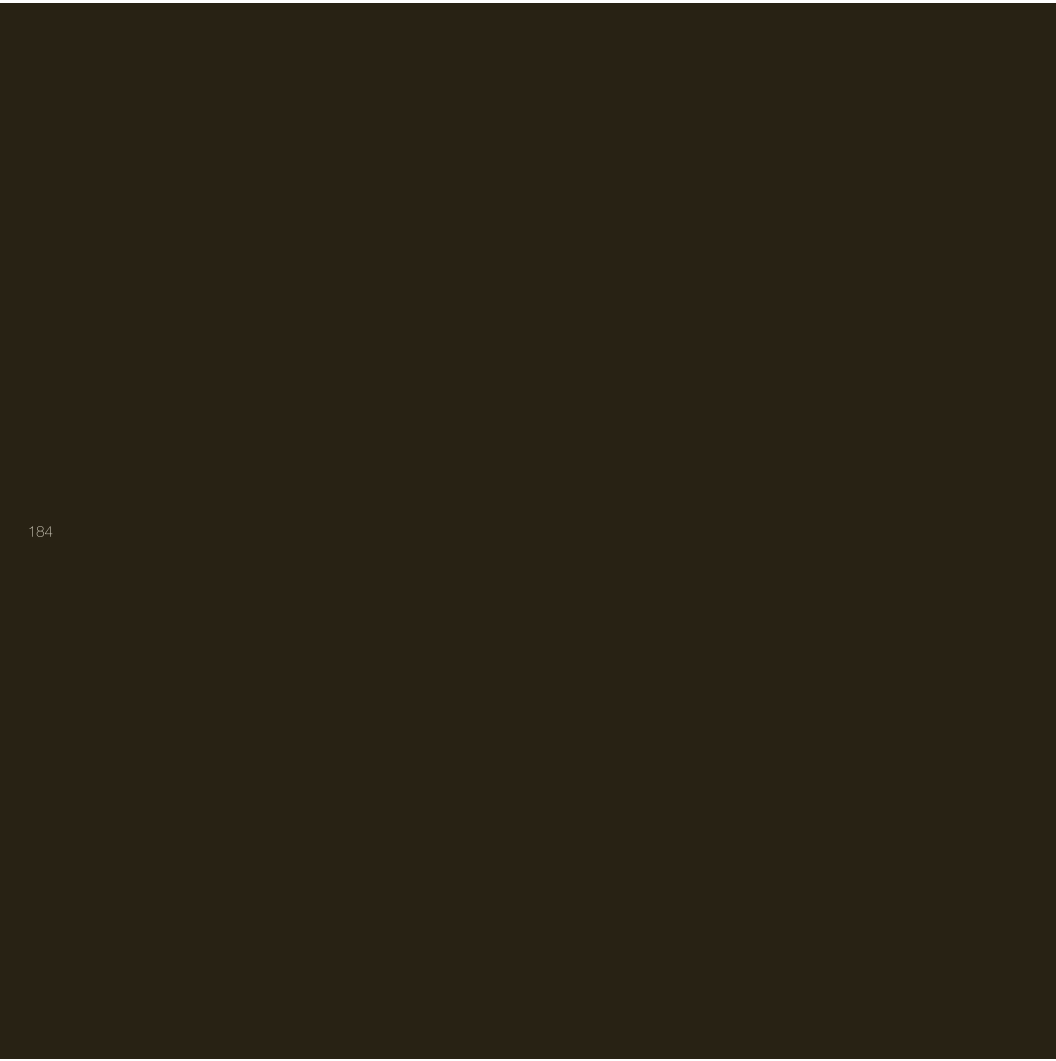
Unit Numbers	Unit Area	Balcony Area	Total Area
C4C1, C4C1-1, C4C1-2	734.43 m ² (7,921 sqft)	287.53 m ² (3,095 sqft)	1,021.96 m ² (11,016 sqft)



*Measurements are inclusive from the finish of floor to the finish of floor, including construction elements. All dimensions may vary from structure and unit layout may vary as internal entities. All figures used are for illustrative purposes only. All dimensions are approximate and may vary from the actual dimensions. All dimensions are approximate and may vary from the actual dimensions. All dimensions are approximate and may vary from the actual dimensions. All dimensions are approximate and may vary from the actual dimensions.









Redefining ultra luxury *at the Presidential Suites*

Spread over two levels, the Presidential Suites at Armani Beach Residences at Palm Jumeirah feature ultra-luxurious mega roof terraces, as well as terraces and courtyards offering unfiltered views across the Arabian Gulf and the Dubai skyline.

Each Presidential Suite contains a large pool, as well as a children's pool/jacuzzi, while a key feature is a contemplative courtyard space designed by Tadao Ando that includes a reflective water feature and access to the open sky. Owners may choose existing specifications for the interiors or enjoy the opportunity to create a bespoke interior scheme in partnership with Armani/Casa.

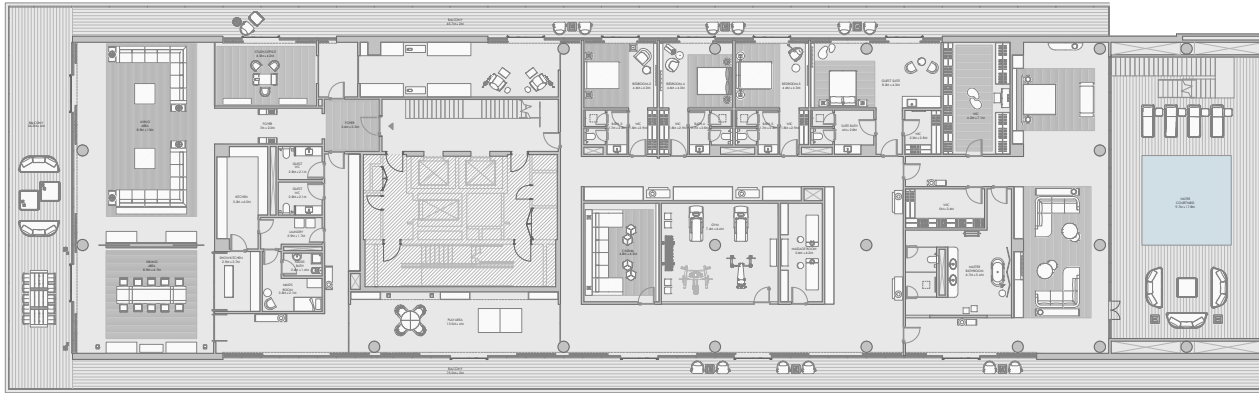
The Presidential Suites also features unique internal typologies, including gyms, libraries, a study, a cinema, entertainment spaces and kitchens, as well as a private lounge on the parking level with space for seven vehicles.

Presidential Suite 1 comes with a €200,000 certificate and Presidential Suite 2 comes with a €350,000 certificate for Armani/Casa furniture.



Presidential Suite 1 First Floor - Unit Plan

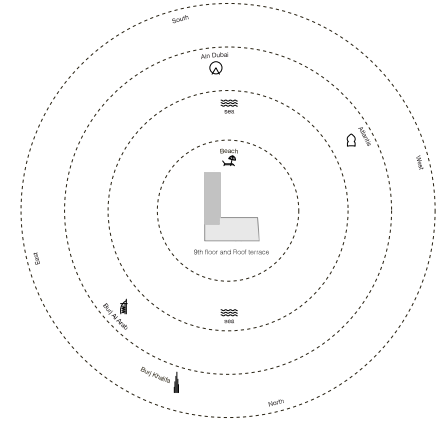
Presidential Suite 1 First Floor - Unit Plan



► North

Presidential Suite 1 First Floor - Unit Details

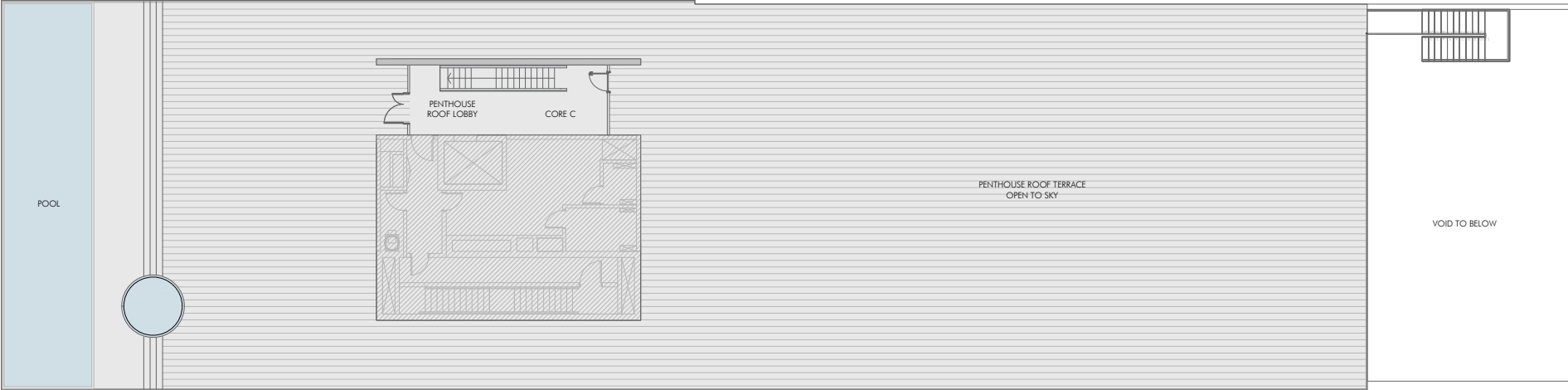
Unit Numbers	Unit Area	Balcony Area	Total Area
C-301	1,242.23 m ² (13,374 sqft)	1,635.75 m ² (17,575 sqft)	2,875.28 m ² (30,949 sqft)



*Measurements are inclusive from the finish of the floor to the finish of the ceiling. All dimensions may vary from drawings and Unit Layouts may vary as internal layouts. All figures are in m² and sqft unless otherwise stated. All figures are approximate and should not be used for construction purposes. All figures should be verified on the day of construction. All figures are in m² and sqft unless otherwise stated.

Presidential Suite 1 Roof Top Terrace - Unit Plan

194



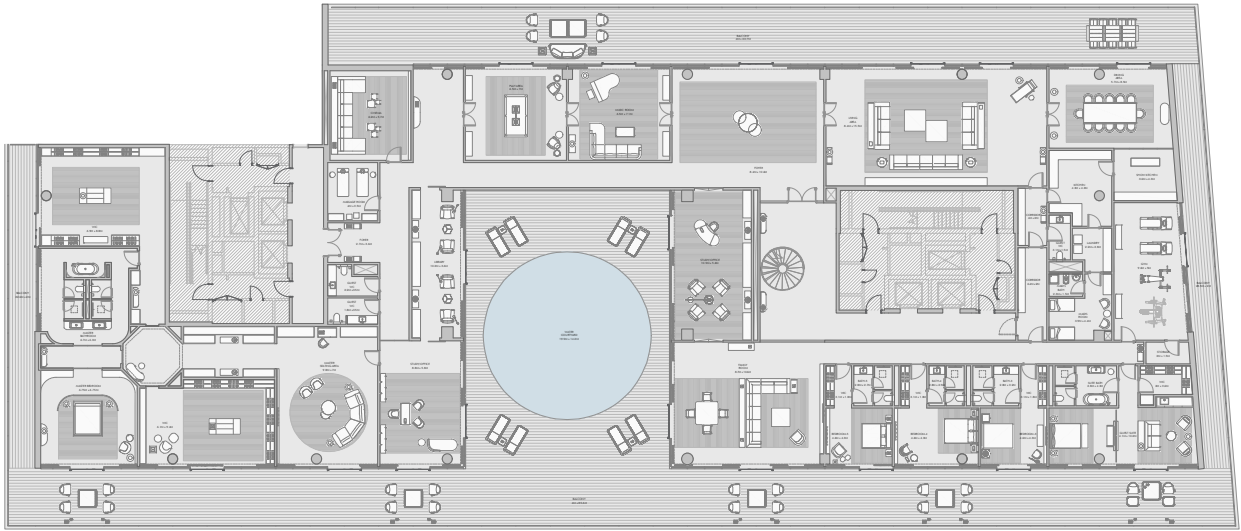
195

North



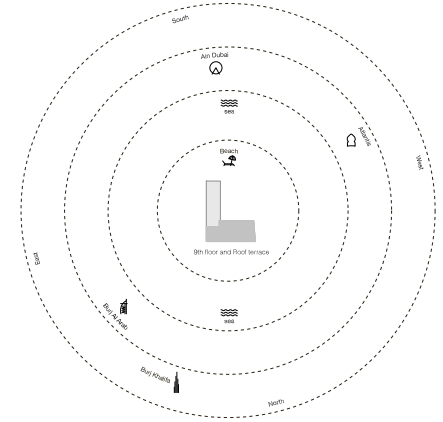
Residential Suite 2 First Floor - Unit Plan

Residential Suite 2 First Floor - Unit Plan



Residential Suite 2 First Floor - Unit Details

Unit Numbers	Unit Area	Balcony Area	Total Area
A-201	1,839.27 m ² (19,788 sqft.)	2,375.24 m ² (25,542 sqft.)	4,214.51 m ² (45,330 sqft.)



*Measurements are inclusive from the finish of floor to finish of floor including construction elements. All dimensions may vary from structure and Unit Layouts may vary as internal partitions. All figures used are for illustrative purposes only. All dimensions are approximate and may vary from actual dimensions. All dimensions are approximate and may vary from actual dimensions. All dimensions are approximate and may vary from actual dimensions. All dimensions are approximate and may vary from actual dimensions.

Presidential Suite 2 Roof Top Terrace - Unit Plan

