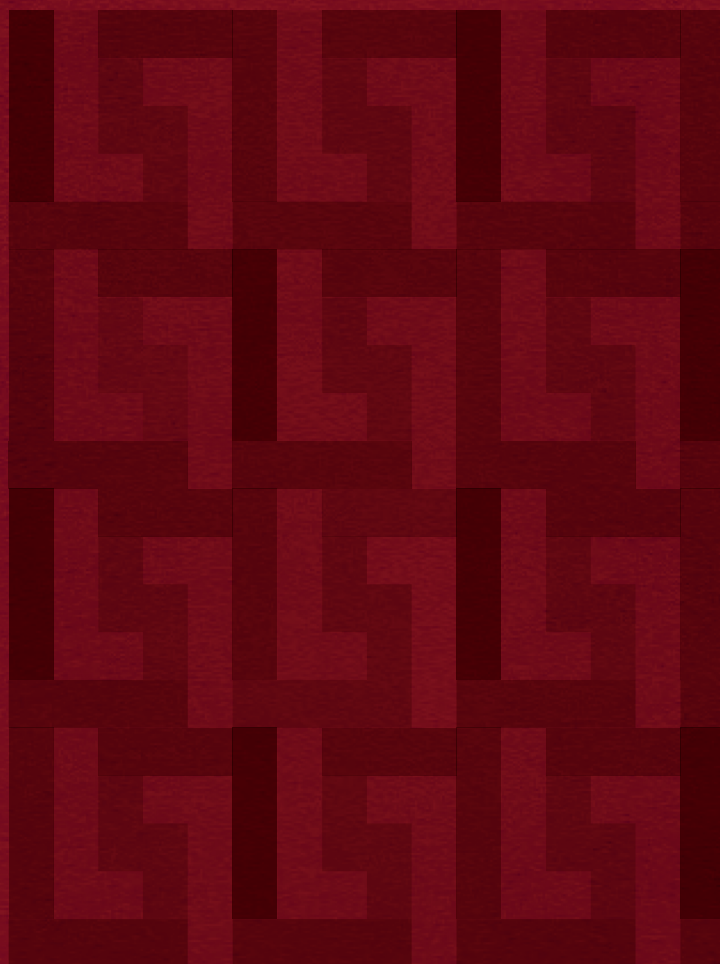




HADLEY
HEIGHTS



JUMEIRAH VILLAGE CIRCLE



LEOS



PROPERTY TYPES

1ST FLOOR

TYPES	NUMBER OF UNITS	SIZES (Sq.Ft.)
STUDIO	-	-
1 BEDROOM	3	840.88 - 970.80
2 BEDROOMS	3	1,415.24 - 1,425.03

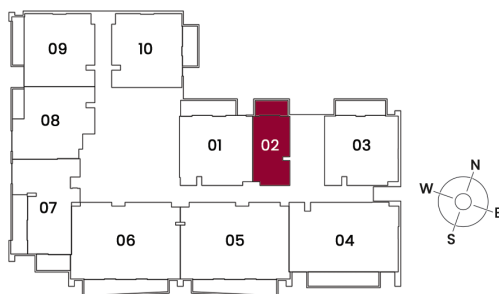
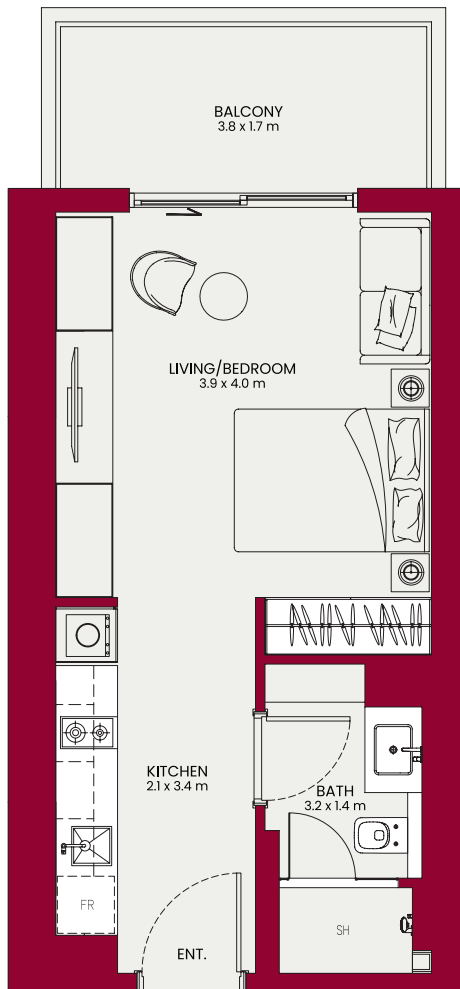
2ND - 22ND FLOOR

TYPES	NUMBER OF UNITS	SIZES (Sq.Ft.)
STUDIO	21	458.87
1 BEDROOM	126	840.88 - 970.80
2 BEDROOMS	63	1,284.57 - 1,425.03

UNIT 02

STUDIO

TYPICAL UNIT TYPE



Internal Area	382.44 sq.ft. / 35.52 sq.m.
Outdoor Area	76.42 sq.ft. / 7.09 sq.m.
Total Area	458.87 sq.ft. / 42.63 sq.m.

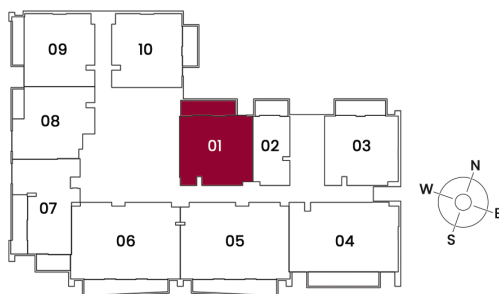
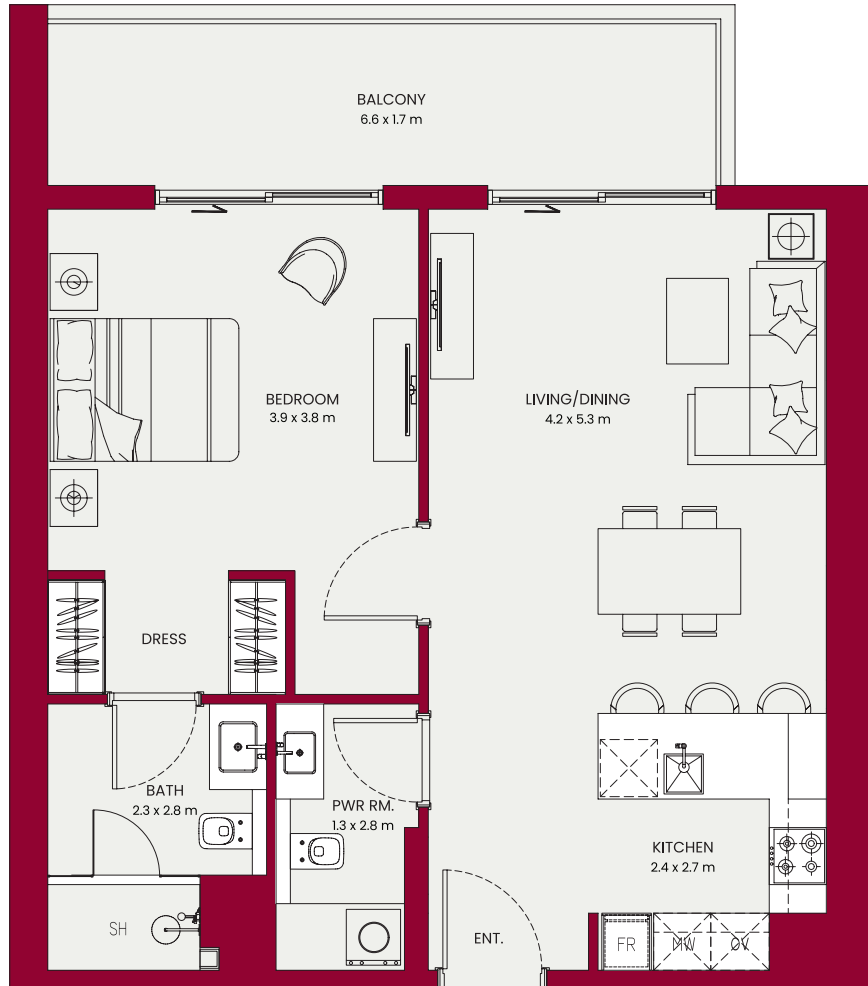
Views	Unit Series
Pool	02

*All drawings and dimensions are approximate. Drawings not to scale and are subject to change without notice. The developer reserves the right to make revisions. The units are measured at typical floor in the building and columns may vary in size depending on the floor level. The furnishings and accessories shown are for representation only. The length and width of the unit and balcony varies depending on which floor and which orientation the unit is located within the building to comply with the building authority regulations.

UNIT 01

1 BEDROOM TYPE - A

TYPICAL UNIT TYPE



Internal Area 758.86 sq.ft. / 70.50 sq.m.

Outdoor Area 129.06 sq.ft. / 11.99 sq.m.

Total Area 887.91 sq.ft. / 82.48 sq.m.

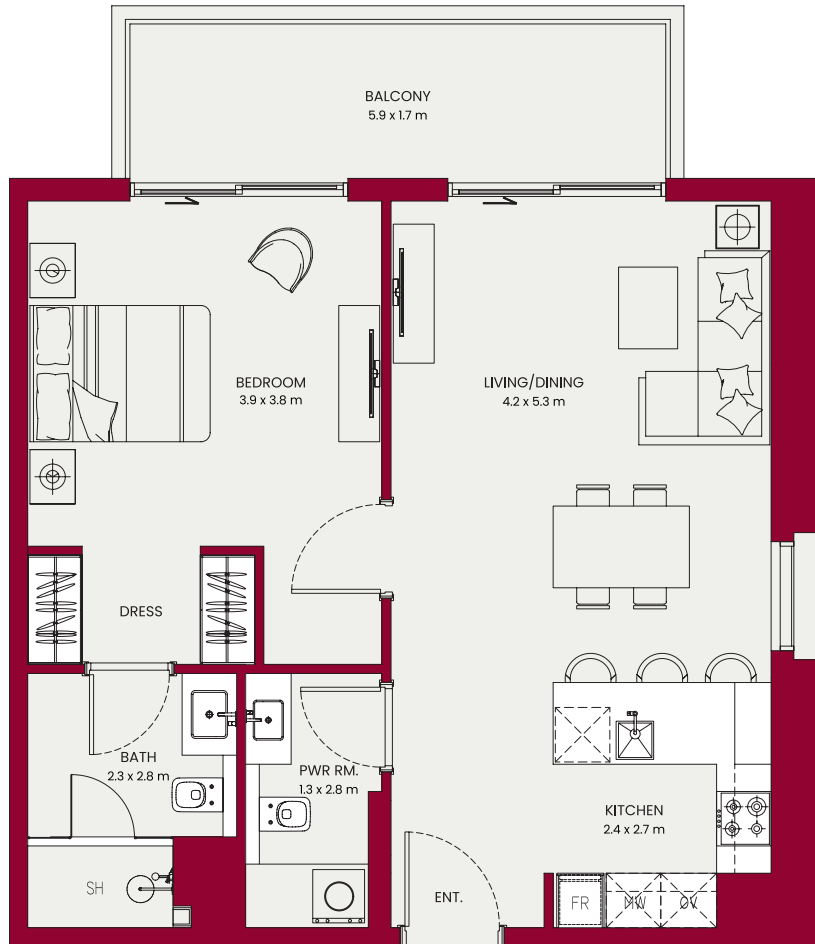
Views	Unit Series
Pool	01

*All drawings and dimensions are approximate. Drawings not to scale and are subject to change without notice. The developer reserves the right to make revisions. The units are measured at typical floor in the building and columns may vary in size depending on the floor level. The furnishings and accessories shown are for representation only. The length and width of the unit and balcony varies depending on which floor and which orientation the unit is located within the building to comply with the building authority regulations.

UNIT 03

1 BEDROOM TYPE - A

TYPICAL UNIT TYPE



Internal Area 764.56 sq.ft. / 71.03 sq.m.

Outdoor Area 115.60 sq.ft. / 10.74 sq.m.

Total Area 880.16 sq.ft. / 81.77 sq.m.

Views	Unit Series
Pool & Play Area	03

*All drawings and dimensions are approximate. Drawings not to scale and are subject to change without notice. The developer reserves the right to make revisions. The units are measured at typical floor in the building and columns may vary in size depending on the floor level. The furnishings and accessories shown are for representation only. The length and width of the unit and balcony varies depending on which floor and which orientation the unit is located within the building to comply with the building authority regulations.

UNIT 09

1 BEDROOM TYPE - A

TYPICAL UNIT TYPE



Internal Area 766.71 sq.ft. / 71.23 sq.m.

Outdoor Area 85.78 sq.ft. / 7.97 sq.m.

Total Area 852.50 sq.ft. / 79.20 sq.m.

Views

Sikka & Garden

Unit Series

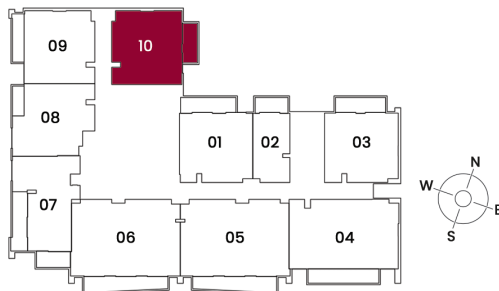
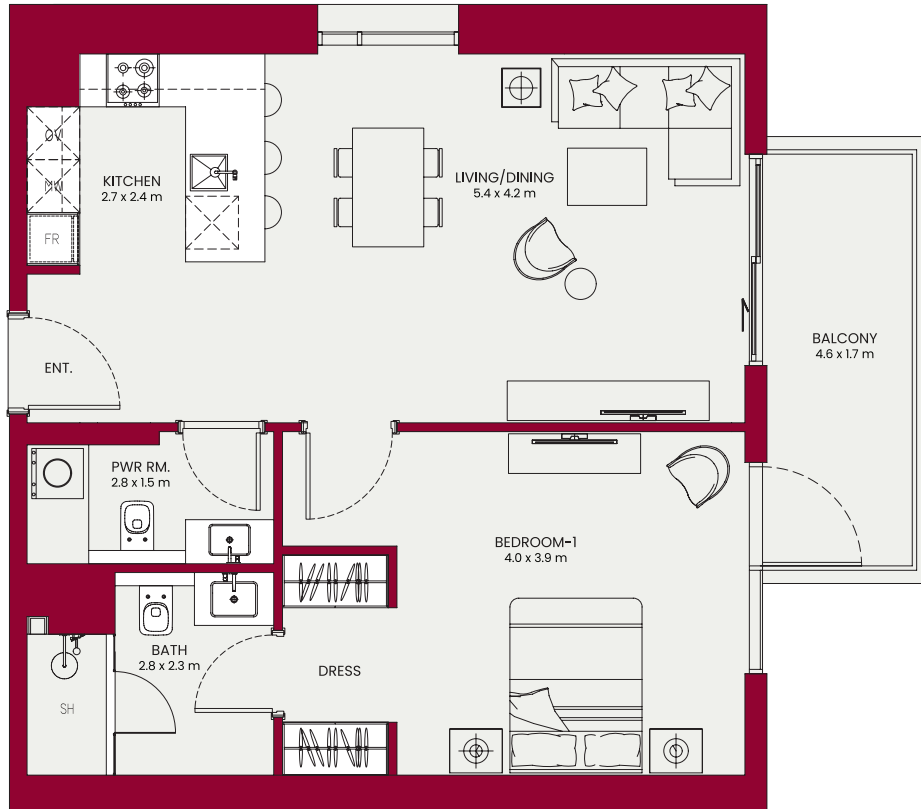
09

*All drawings and dimensions are approximate. Drawings not to scale and are subject to change without notice. The developer reserves the right to make revisions. The units are measured at typical floor in the building and columns may vary in size depending on the floor level. The furnishings and accessories shown are for representation only. The length and width of the unit and balcony varies depending on which floor and which orientation the unit is located within the building to comply with the building authority regulations.

UNIT 10

1 BEDROOM TYPE - A

TYPICAL UNIT TYPE



Internal Area 773.39 sq.ft. / 71.85 sq.m.

Outdoor Area 91.71 sq.ft. / 8.52 sq.m.

Total Area 865.10 sq.ft. / 80.37 sq.m.

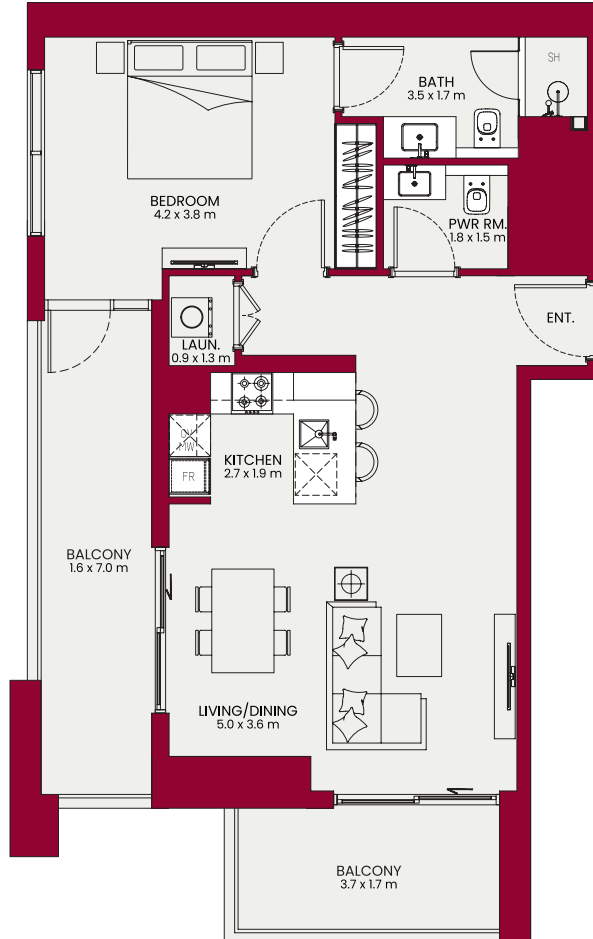
Views	Unit Series
Garden & Pool	10

*All drawings and dimensions are approximate. Drawings not to scale and are subject to change without notice. The developer reserves the right to make revisions. The units are measured at typical floor in the building and columns may vary in size depending on the floor level. The furnishings and accessories shown are for representation only. The length and width of the unit and balcony varies depending on which floor and which orientation the unit is located within the building to comply with the building authority regulations.

UNIT 07

1 BEDROOM TYPE - B

TYPICAL UNIT TYPE



Internal Area 747.23 sq.ft. / 69.42 sq.m.

Outdoor Area 223.57 sq.ft. / 20.77 sq.m.

Total Area 970.80 sq.ft. / 90.19 sq.m.

Views

Sikka & Street / Park

Unit Series

07

*All drawings and dimensions are approximate. Drawings not to scale and are subject to change without notice. The developer reserves the right to make revisions. The units are measured at typical floor in the building and columns may vary in size depending on the floor level. The furnishings and accessories shown are for representation only. The length and width of the unit and balcony varies depending on which floor and which orientation the unit is located within the building to comply with the building authority regulations.

UNIT 08

1 BEDROOM TYPE - C

TYPICAL UNIT TYPE



Internal Area 788.03 sq.ft. / 73.21 sq.m.

Outdoor Area 52.85 sq.ft. / 4.91 sq.m.

Total Area 840.88 sq.ft. / 78.12 sq.m.

Views

Sikka

Unit Series

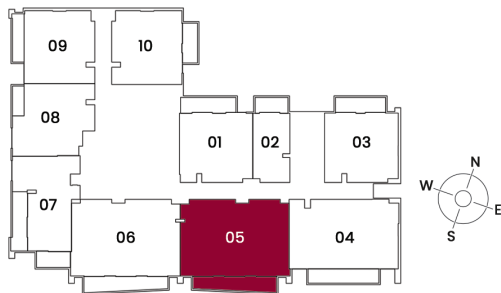
08

*All drawings and dimensions are approximate. Drawings not to scale and are subject to change without notice. The developer reserves the right to make revisions. The units are measured at typical floor in the building and columns may vary in size depending on the floor level. The furnishings and accessories shown are for representation only. The length and width of the unit and balcony varies depending on which floor and which orientation the unit is located within the building to comply with the building authority regulations.

UNIT 05

2 BEDROOM TYPE - A

TYPICAL UNIT TYPE



Internal Area 1239.68 sq.ft. / 115.17 sq.m.

Outdoor Area 182.56 sq.ft. / 16.96 sq.m.

Total Area 1422.24 sq.ft. / 132.13 sq.m.

Views

Street / Park

Unit Series

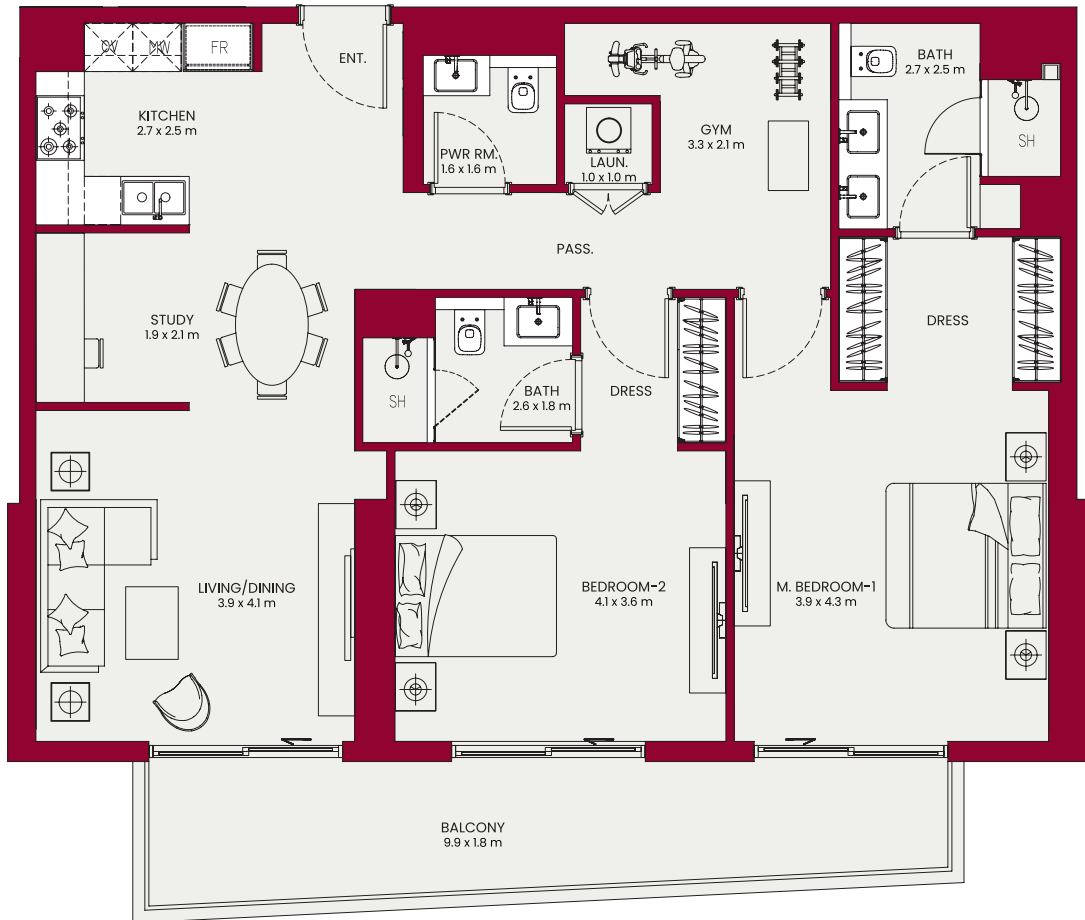
05

*All drawings and dimensions are approximate. Drawings not to scale and are subject to change without notice. The developer reserves the right to make revisions. The units are measured at typical floor in the building and columns may vary in size depending on the floor level. The furnishings and accessories shown are for representation only. The length and width of the unit and balcony varies depending on which floor and which orientation the unit is located within the building to comply with the building authority regulations.

UNIT 06

2 BEDROOM TYPE - A

TYPICAL UNIT TYPE



Internal Area 1242.48 sq.ft. / 115.43 sq.m.

Outdoor Area 182.56 sq.ft. / 16.96 sq.m.

Total Area 1425.03 sq.ft. / 132.39 sq.m.

Views

Street / Park

Unit Series

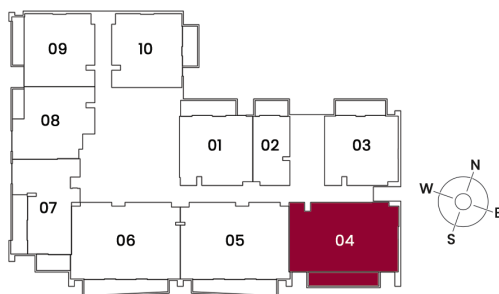
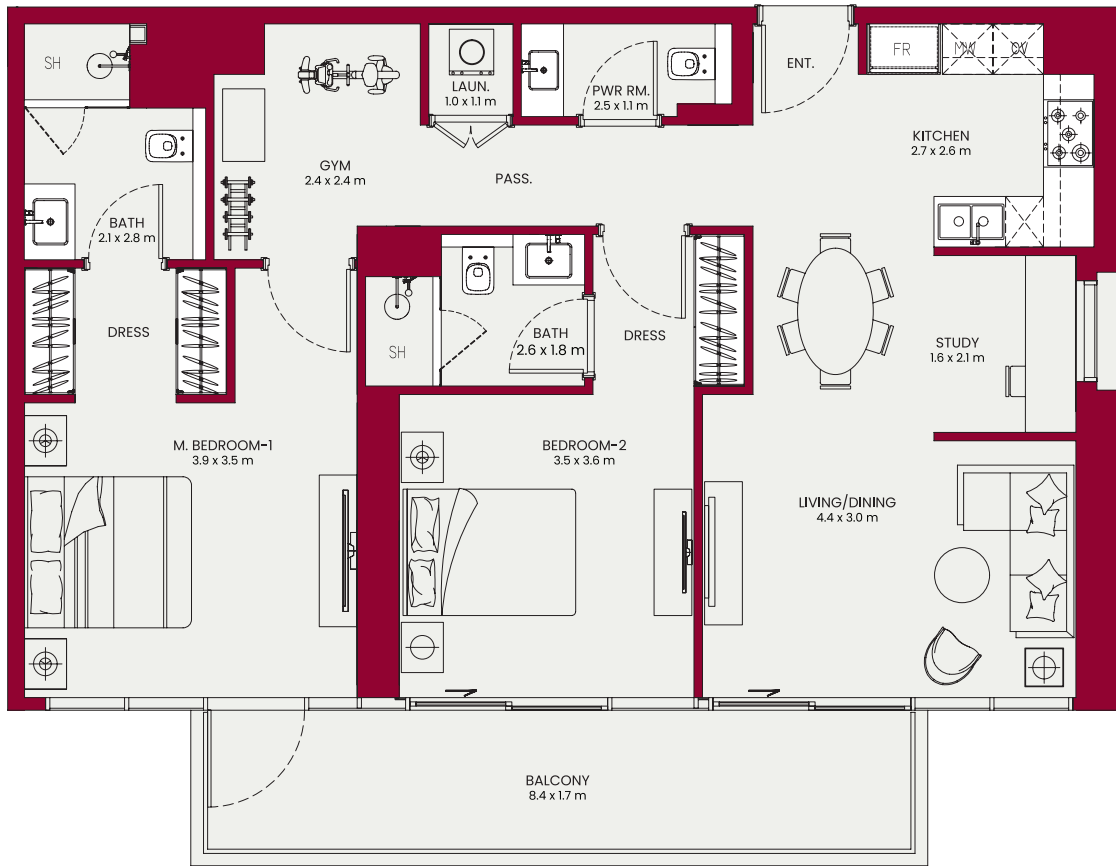
06

*All drawings and dimensions are approximate. Drawings not to scale and are subject to change without notice. The developer reserves the right to make revisions. The units are measured at typical floor in the building and columns may vary in size depending on the floor level. The furnishings and accessories shown are for representation only. The length and width of the unit and balcony varies depending on which floor and which orientation the unit is located within the building to comply with the building authority regulations.

UNIT 04

2 BEDROOM TYPE - B

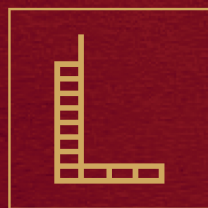
TYPICAL UNIT TYPE



Internal Area	1131.93 sq.ft. / 105.15 sq.m.
Outdoor Area	152.63 sq.ft. / 14.17 sq.m.
Total Area	1284.57 sq.ft. / 119.34 sq.m.

Views	Unit Series
Street / Park & Play Area	04

*All drawings and dimensions are approximate. Drawings not to scale and are subject to change without notice. The developer reserves the right to make revisions. The units are measured at typical floor in the building and columns may vary in size depending on the floor level. The furnishings and accessories shown are for representation only. The length and width of the unit and balcony varies depending on which floor and which orientation the unit is located within the building to comply with the building authority regulations.



LEOS

PHONE

-

+971 4 875 9555

EMAIL

-

sales@leosdevelopments.com

WEBSITE

-

www.leosdevelopments.com