

KNIGHTSBRIDGE

PHASE 1

MEYDAN DISTRICT 11

DUBAI'S FIRST CLIMATE-ADAPTIVE WELLNESS COMMUNITY

FLOOR PLANS



LEOS



4 Bedroom Townhouses  
THE HIGHCLERE

- THE HIGHCLERE

4 bedroom townhouses

Middle Units

27 units
- THE HIGHCLERE

4 bedroom townhouses

Corner Units

16 units





## THE HIGHCLERE FEATURES



Fresh harvest  
garden



Smart home  
system



Private  
pool



Spacious  
private elevator



Karesansui  
Balcony garden



Show  
kitchen



Walk-in  
Closet



Climate controlled  
outdoor shaded  
terrace



Maid's room &  
bathroom



Smart irrigation  
system



AI security  
automation



Enhanced  
Drainage  
System

## DETAILS

Number of Bedrooms:

4

Total Number of Units:

43

Sellable Area Ranges:

3,958 - 4,001 sq.ft

Plot Area Ranges:

1,853 - 4,191 sq.ft

Parking Spaces:

2

*4 Bedroom Townhouse*  
**THE HIGHCLERE**



Ground Floor



First Floor



Second Floor





# 4 Bedroom Townhouse THE HIGHCLERE



Ground Floor



First Floor



Second Floor





*4 Bedroom Townhouse*  
**THE HIGHCLERE**



Ground Floor



First Floor



Second Floor





5 Bedroom Villas  
THE GROSVENOR

 THE GROSVENOR  
5 bedroom villas  
18 units





## THE GROSVENOR FEATURES



Double height  
grand entrance



Fresh harvest  
garden



Smart home  
system



Private  
temperature  
controlled pool



Takibi  
Firepit



Spacious  
private elevator



Blockbuster  
private cinema



Chef  
kitchen



Show  
kitchen



Walk-in  
Closet



Master  
jacuzzi



Climate controlled  
outdoor shaded  
terrace



Karesansui  
Balcony  
garden



Maid's &  
driver's room  
& bathroom



Smart  
irrigation  
system



AI security  
automation

## DETAILS

Number of Bedrooms:

5

Total Number of Units:

18

Sellable Area:

5,647 sq.ft

Plot Area Ranges:

4,478 - 7,722 sq.ft

Parking spaces:

3

# 5 Bedroom Villas THE GROSVENOR



Ground Floor



First Floor



Second Floor





*6 Bedroom  
Signature Villas*  
THE BALMORAL



THE BALMORAL  
*6 bedroom signature villas*  
*5 units*





# THE BALMORAL SIGNATURE VILLA FEATURES



Triple height  
grand entrance



Fresh harvest  
garden



Dedicated  
wellness area



Private  
temperature  
controlled pool



Takibi  
Firepit



Spacious  
private elevator



Blockbuster  
private cinema  
(Optional)



Chef  
kitchen



Show  
kitchen



Walk-in  
Closet



Master jacuzzi



Climate controlled  
outdoor shaded  
terrace



Karesansui  
Balcony  
garden



Maid's &  
driver's room  
& bathroom



Smart home  
system



Gym



Smart irrigation  
system



AI security  
automation



Waterproofing  
with 10 Years  
Warranty



Enhanced  
Drainage  
System

## DETAILS

Number of Bedrooms:

6

Total Number of Units:

5

Sellable Area:

7,268 sq.ft

Plot Area Ranges:

7,131 - 8,717 sq.ft

Parking Spaces:

4



6 Bedroom  
Signature Villas  
THE BALMORAL

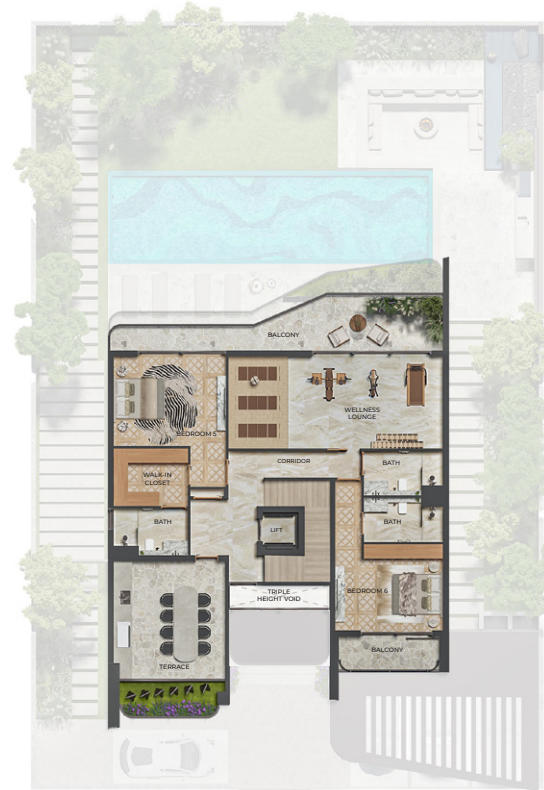
ACCESS TO  
AMENITIES



Ground Floor



First Floor



Second Floor







KNIGHTSBRIDGE

WATERFRONT WELLNESS

UAE FREEPHONE 800 535  
TEL: +97148759555  
[WWW.LEOSDEVELOPMENTS.COM](http://WWW.LEOSDEVELOPMENTS.COM)



LEOS