



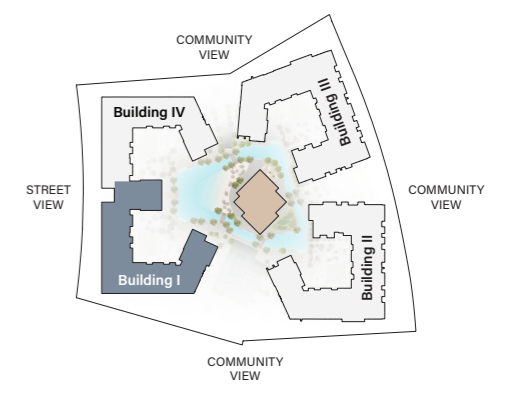
ELLINGTON
PROPERTIES






BELGRAVIA GARDENS

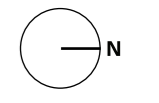
BUILDING I
FLOOR PLAN

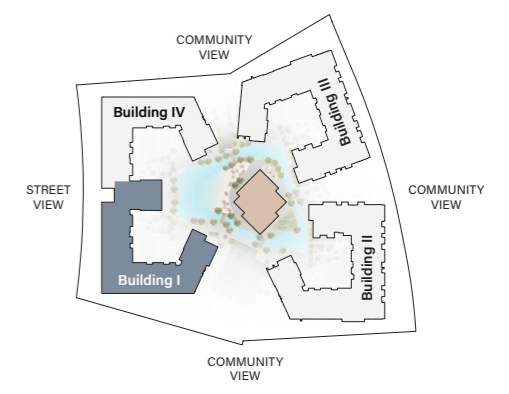
A small, colorful beach ball is visible in the lower right foreground, partially obscured by green foliage.



GROUND FLOOR PLAN

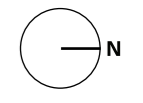
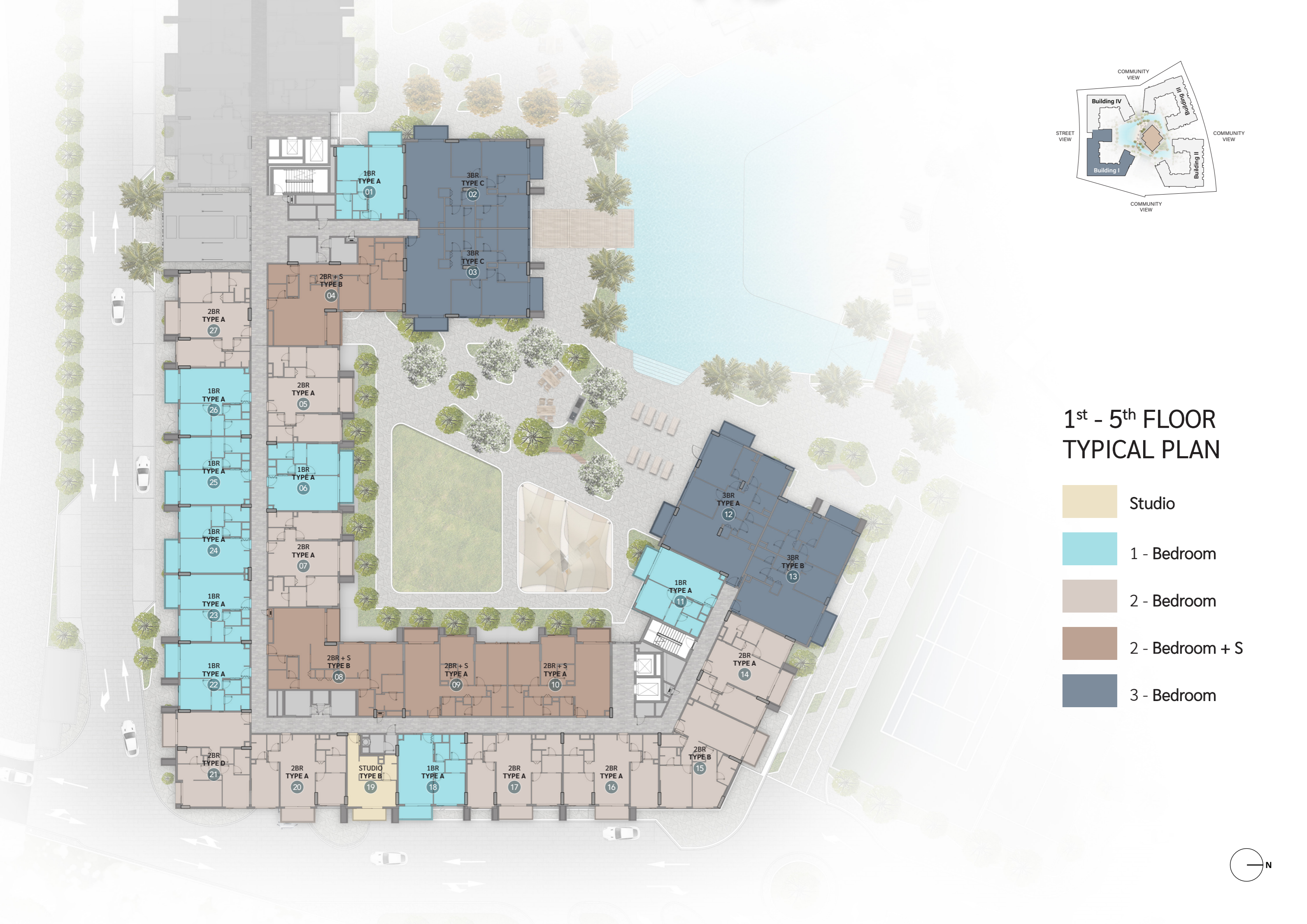
-  1 - Bedroom
-  2 - Bedroom
-  2 - Bedroom + S

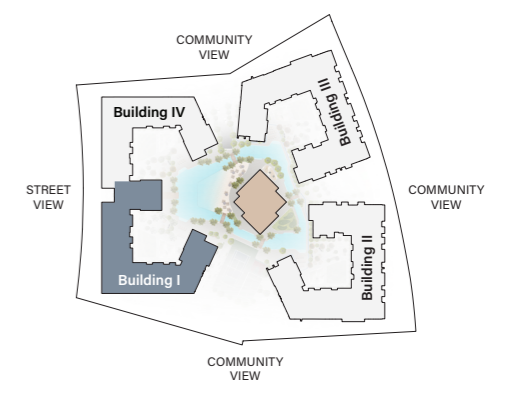




1st - 5th FLOOR TYPICAL PLAN

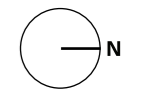
- Studio
- 1 - Bedroom
- 2 - Bedroom
- 2 - Bedroom + S
- 3 - Bedroom





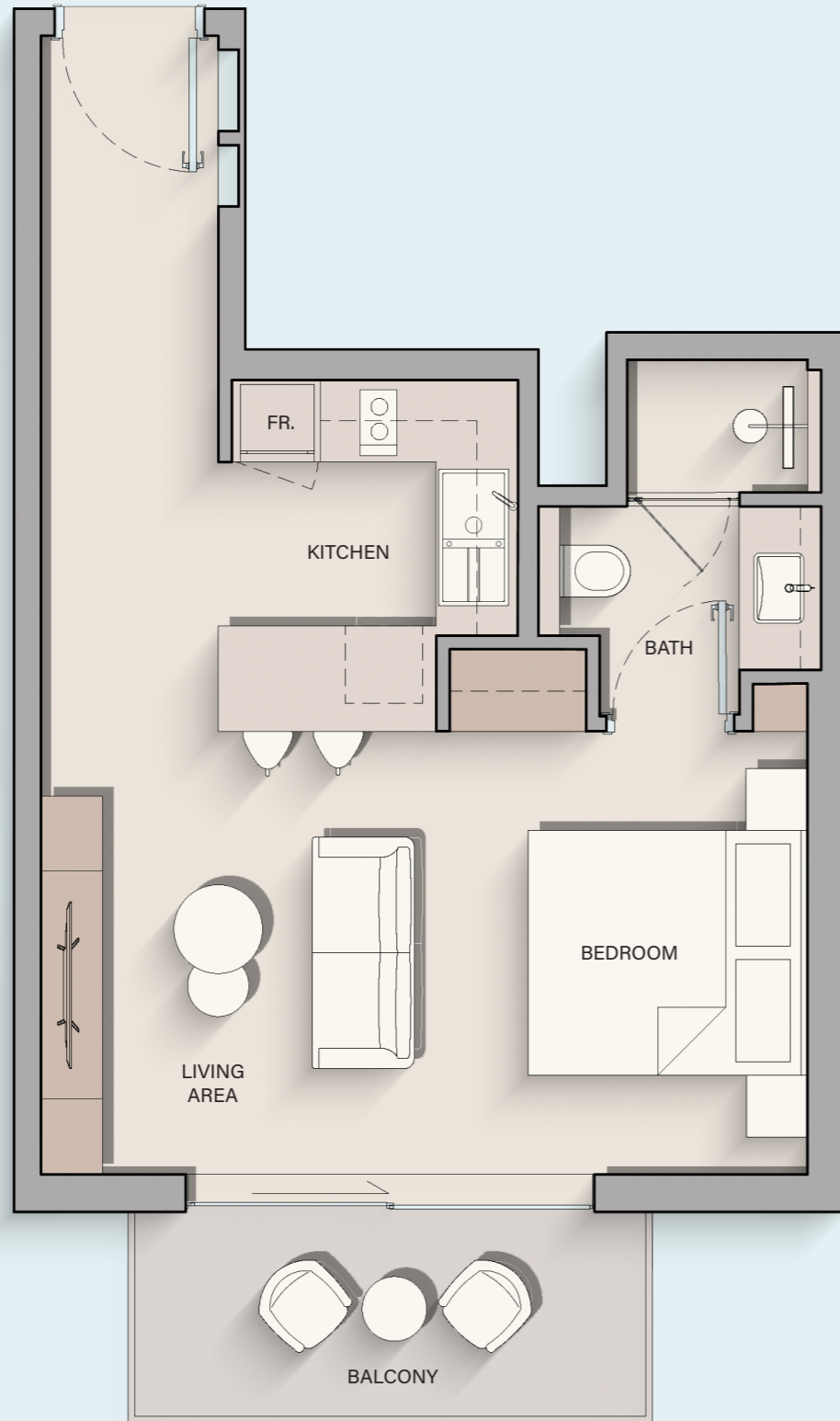
6th FLOOR PLAN

- Studio
- 1 - Bedroom
- 2 - Bedroom
- 2 - Bedroom + S
- 3 - Bedroom



STUDIO

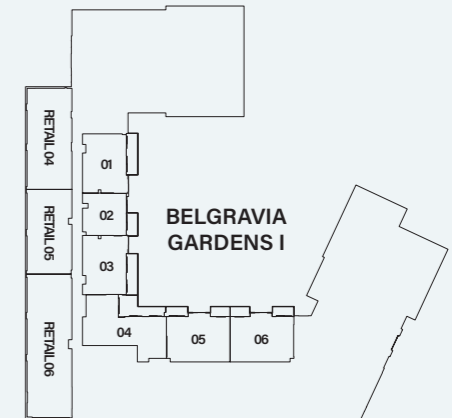
TYPE B



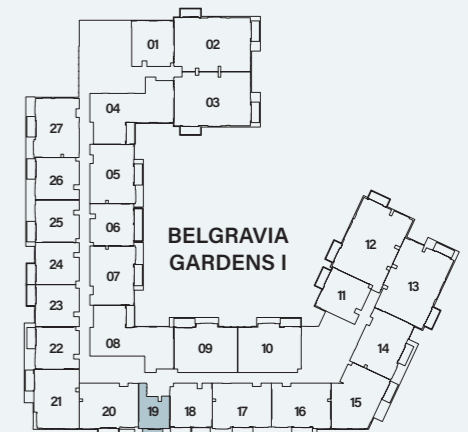
Internal Living Area : **431.53 sq. ft.**

Outdoor Living Area : **65.12 sq. ft.**

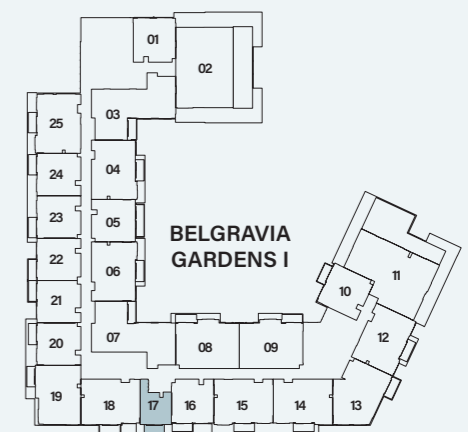
Total Living Area : **496.65 sq. ft.**



Ground Floor



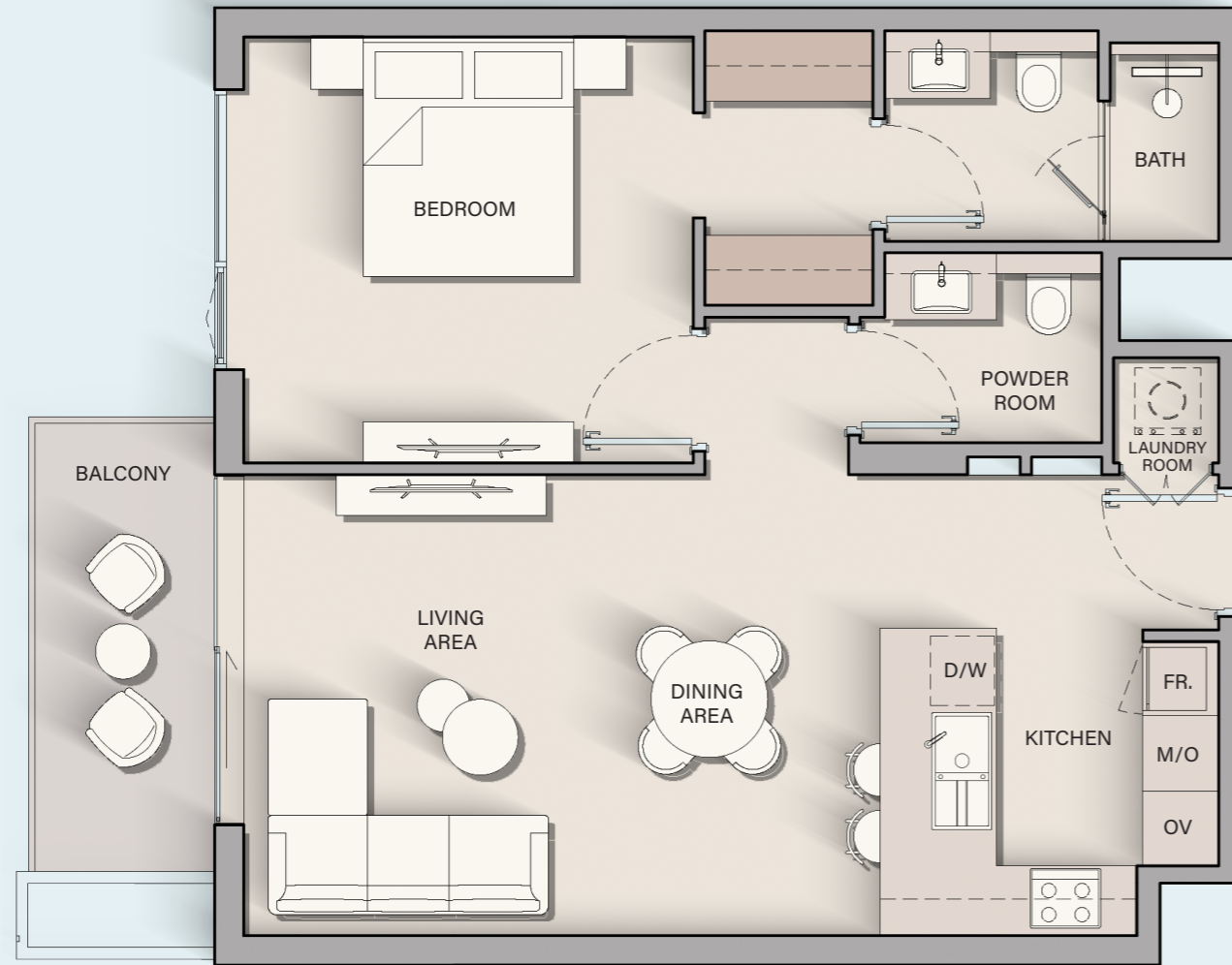
1ST - 5TH Floor



6TH Floor

1-BEDROOM

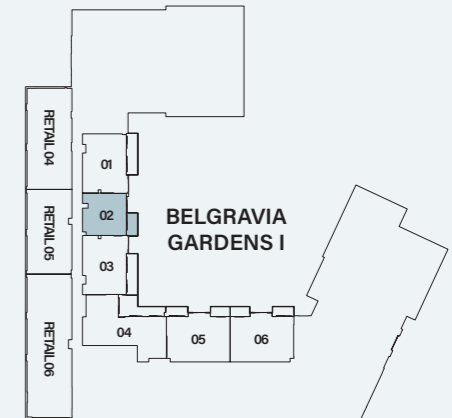
TYPE A



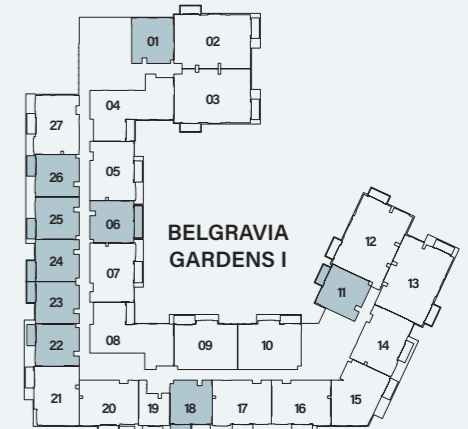
Internal Living Area : **693.20 sq. ft.**

Outdoor Living Area : **71.58 sq. ft.**

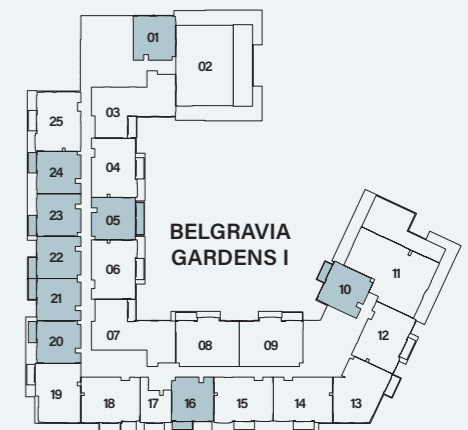
Total Living Area : **764.78 sq. ft.**



Ground Floor



1ST - 5TH Floor



6TH Floor

2-BEDROOM

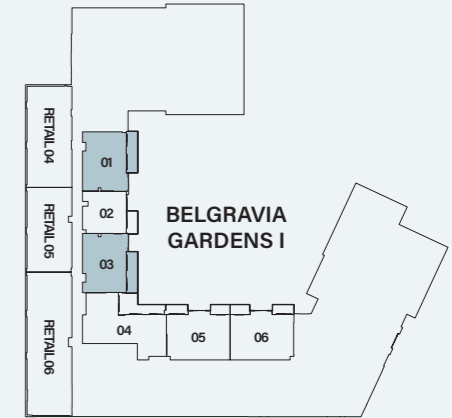
TYPE A



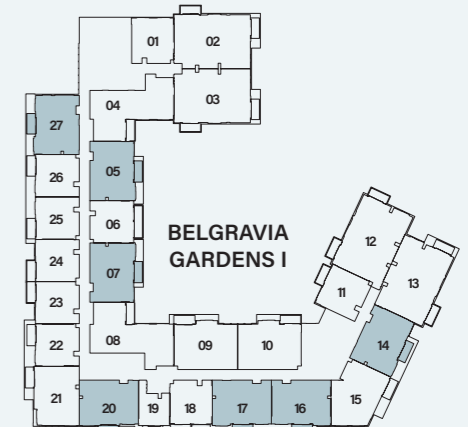
Internal Living Area : **991.79 sq. ft.**

Outdoor Living Area : **72.33 sq. ft.**

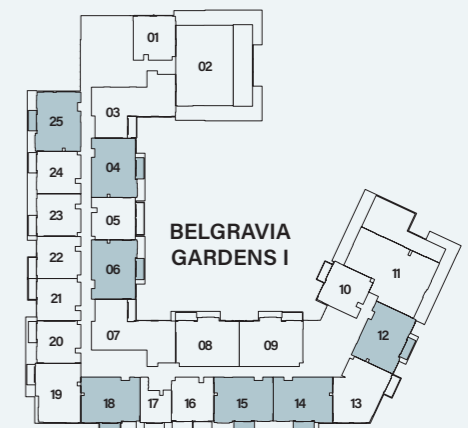
Total Living Area : **1064.12 sq. ft.**



Ground Floor



1ST - 5TH Floor



6TH Floor

2-BEDROOM

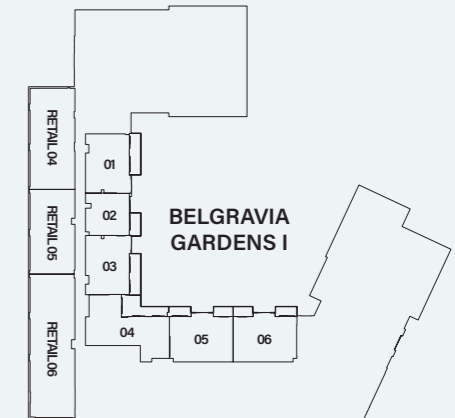
TYPE B



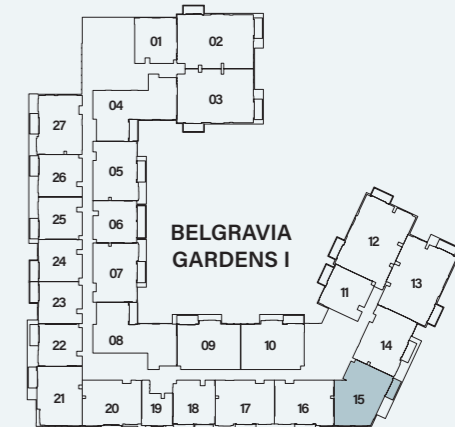
Internal Living Area : **1055.29 sq. ft.**

Outdoor Living Area : **63.94 sq. ft.**

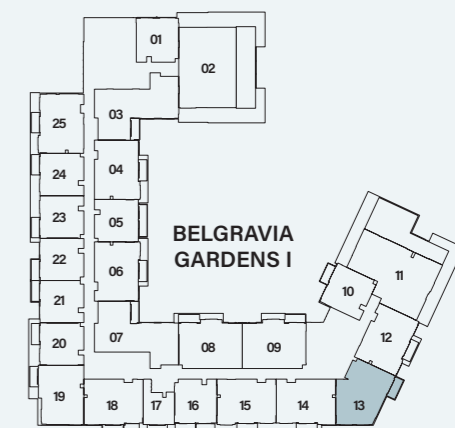
Total Living Area : **1119.23 sq. ft.**



Ground Floor



1ST - 5TH Floor



6TH Floor

2-BEDROOM

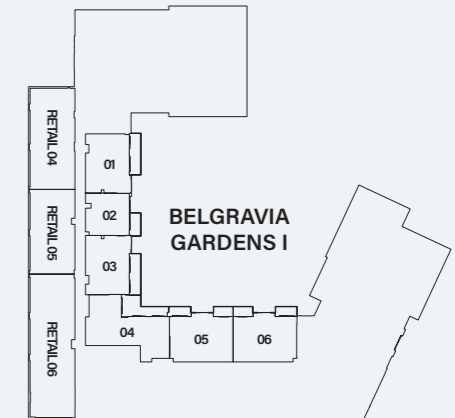
TYPE E



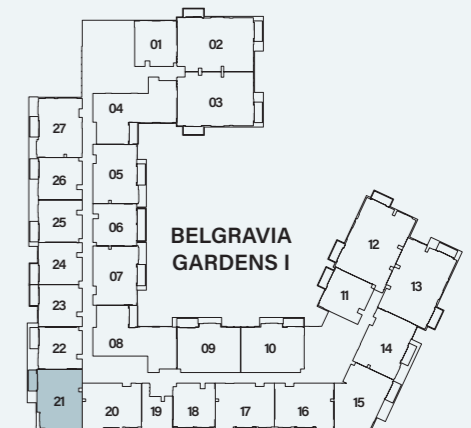
Internal Living Area : **998.25 sq. ft.**

Outdoor Living Area : **78.79 sq. ft.**

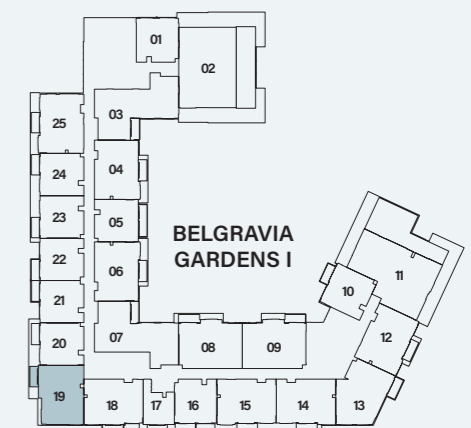
Total Living Area : **1077.04 sq. ft.**



Ground Floor



1ST - 5TH Floor



6TH Floor

2-BEDROOM + S

TYPE A



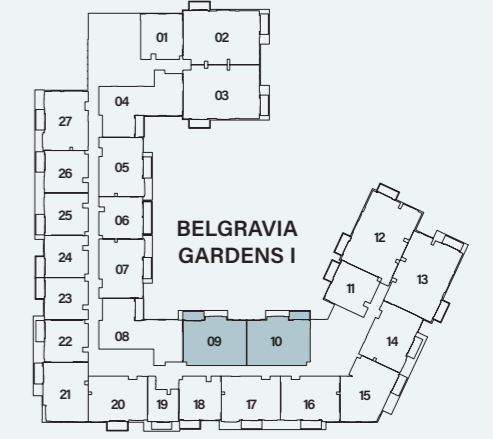
Internal Living Area : **1132.58 sq. ft.**

Outdoor Living Area : **65.55 sq. ft.**

Total Living Area : **1198.13 sq. ft.**



Ground Floor



1ST - 5TH Floor



6TH Floor

2-BEDROOM + S

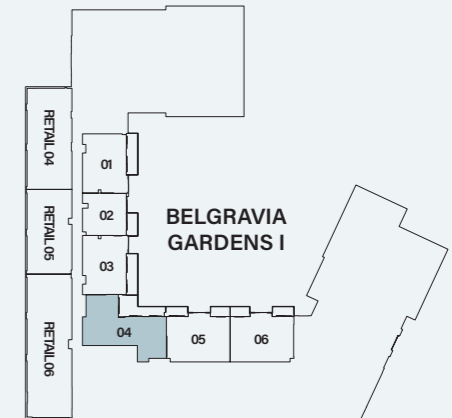
TYPE B



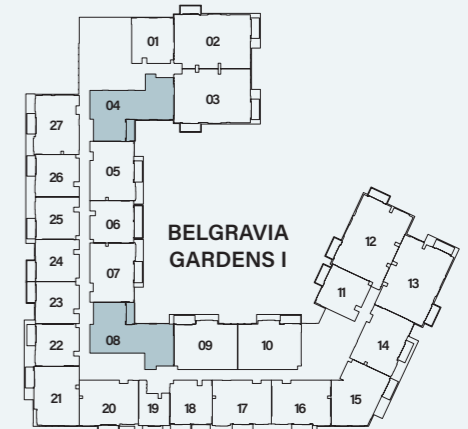
Internal Living Area : 1368.63 sq. ft.

Outdoor Living Area : 70.72 sq. ft.

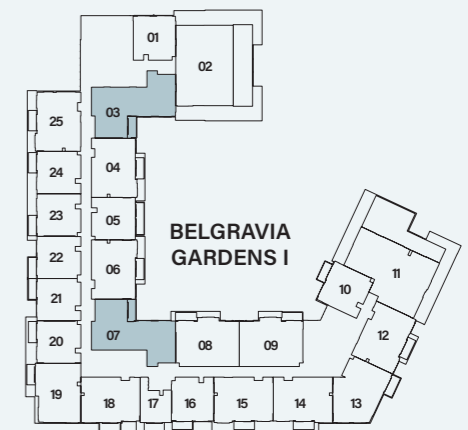
Total Living Area : 1439.35 sq. ft.



Ground Floor



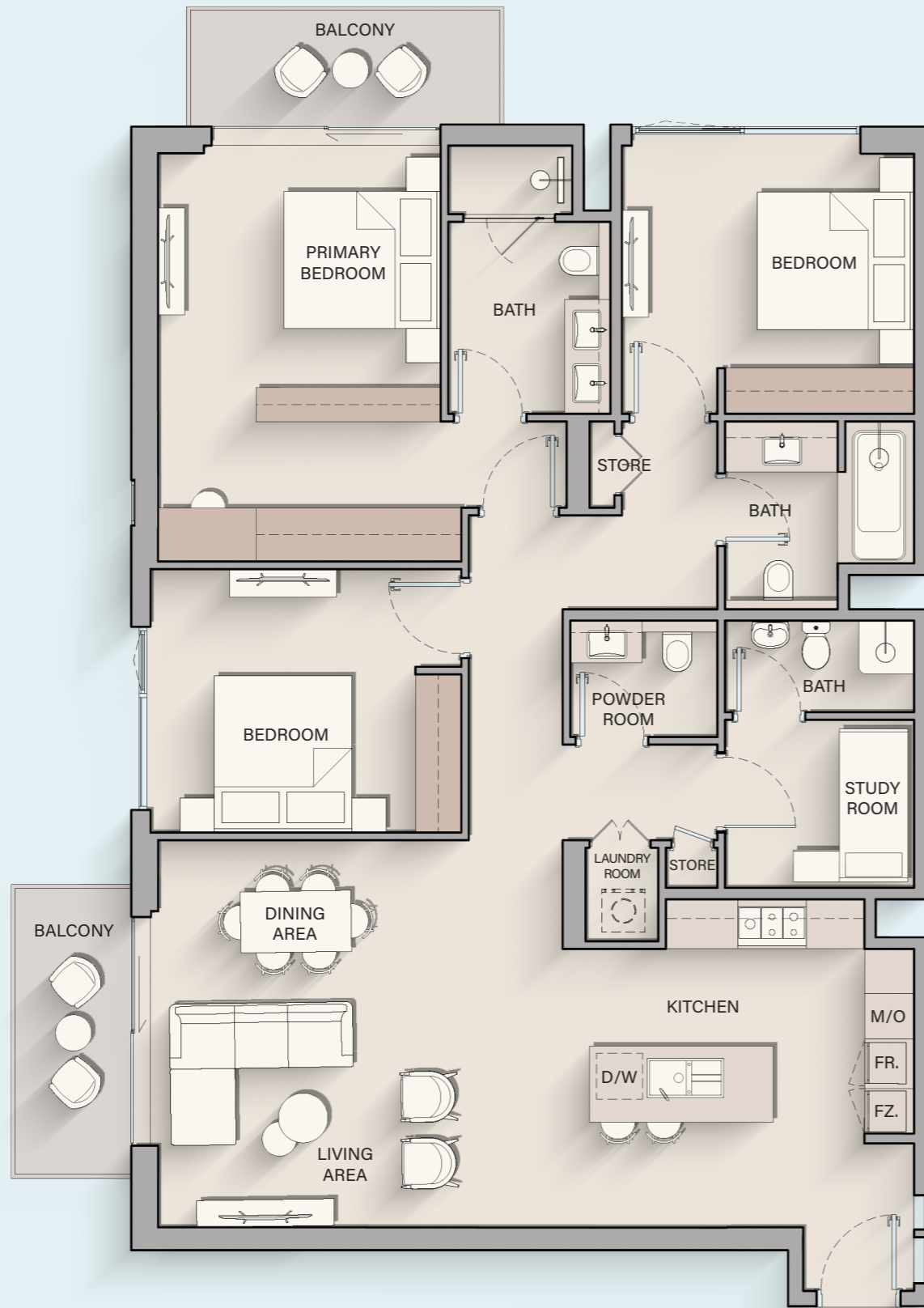
1ST - 5TH Floor



6TH Floor

3-BEDROOM

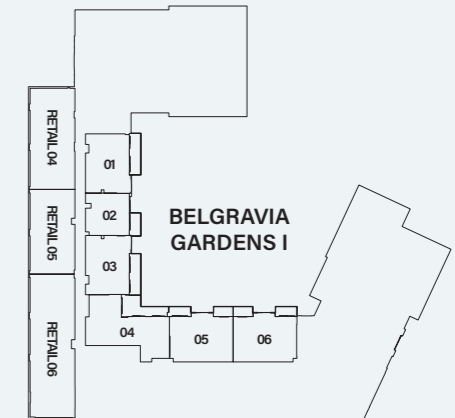
TYPE A



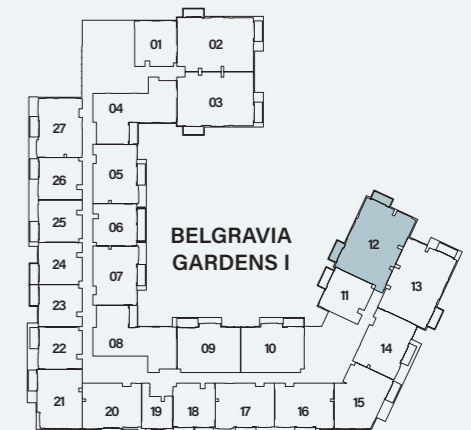
Internal Living Area : **1599.19 sq. ft.**

Outdoor Living Area : **136.06 sq. ft.**

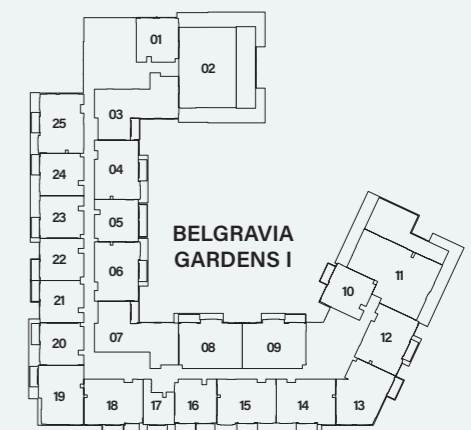
Total Living Area : **1735.25 sq. ft.**



Ground Floor



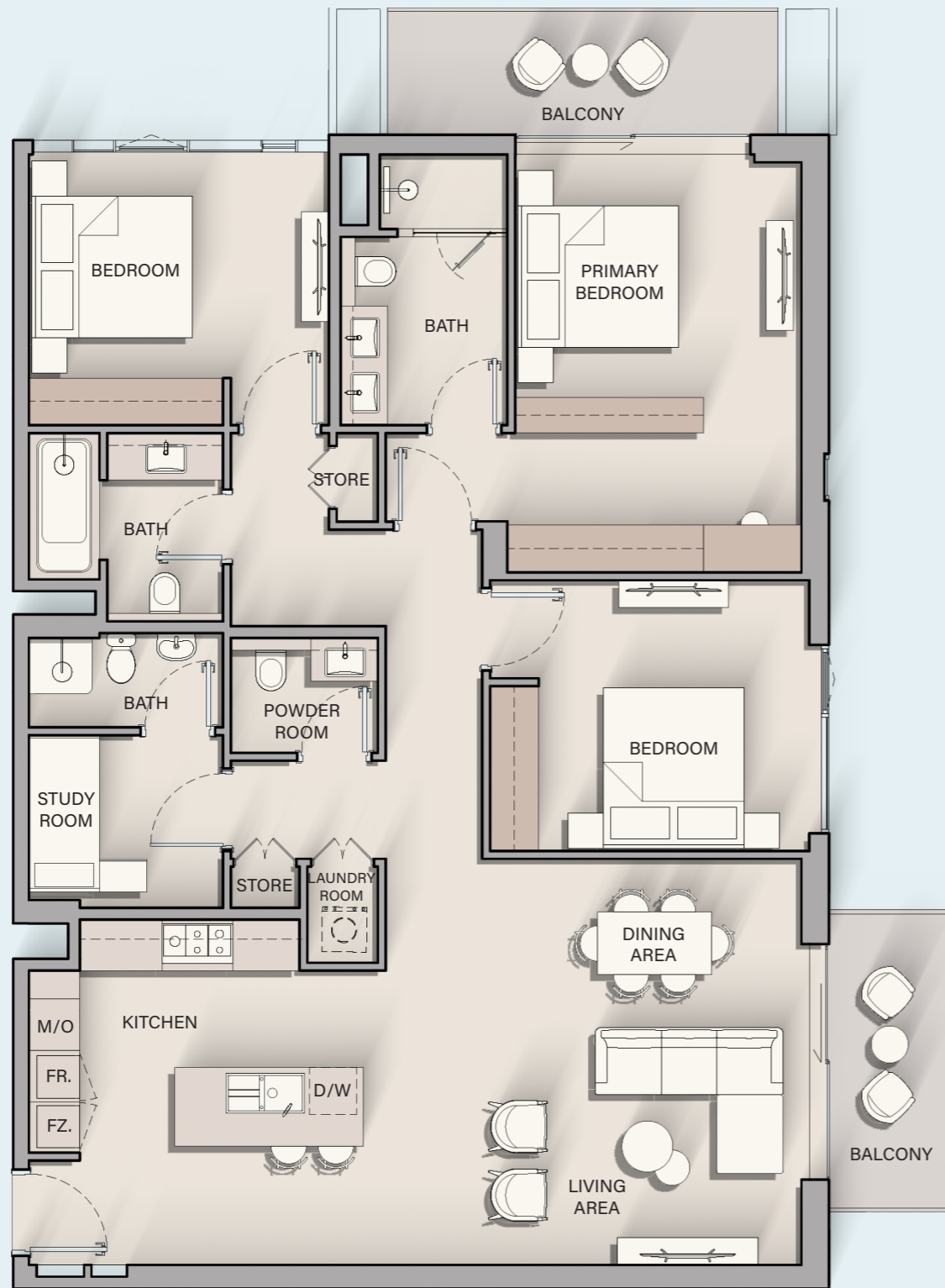
1ST - 5TH Floor



6TH Floor

3-BEDROOM

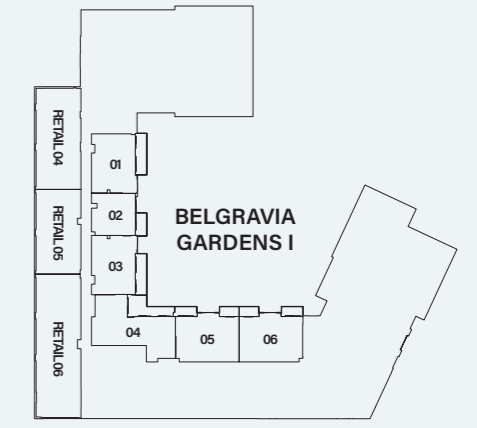
TYPE B



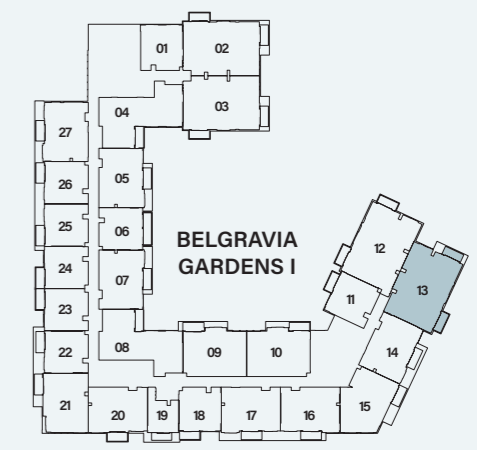
Internal Living Area : 1554.63 sq. ft.

Outdoor Living Area : 155.32 sq. ft.

Total Living Area : 1709.95 sq. ft.



Ground Floor



1ST - 5TH Floor



6TH Floor

3-BEDROOM

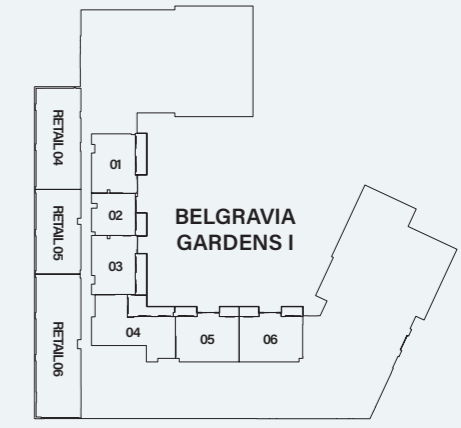
TYPE D



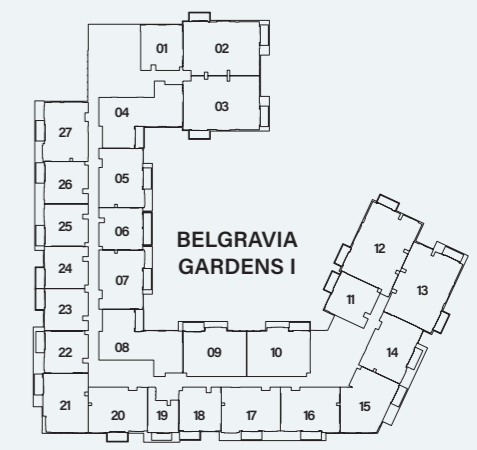
Internal Living Area : 1738.80 sq. ft.

Outdoor Living Area : 847.12 sq. ft.

Total Living Area : 2585.92 sq. ft.



Ground Floor



1ST - 5TH Floor



6TH Floor

3-BEDROOM

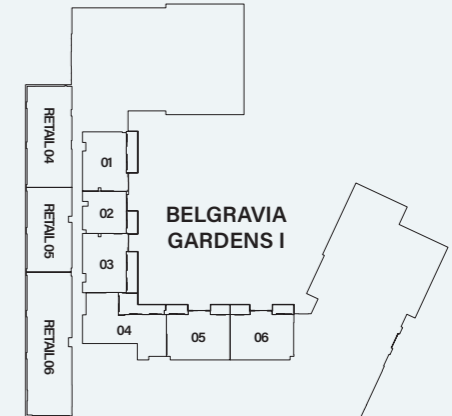
TYPE F



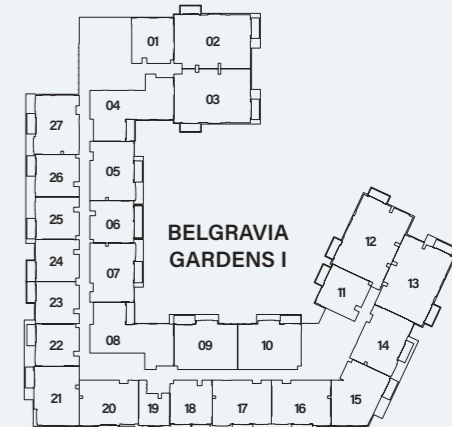
Internal Living Area : 1888.31 sq. ft.

Outdoor Living Area : 557.79 sq. ft.

Total Living Area : 2446.10 sq. ft.



Ground Floor



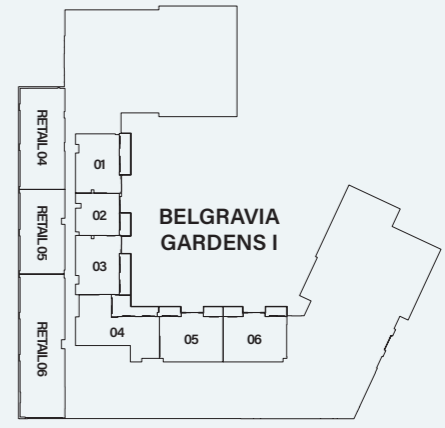
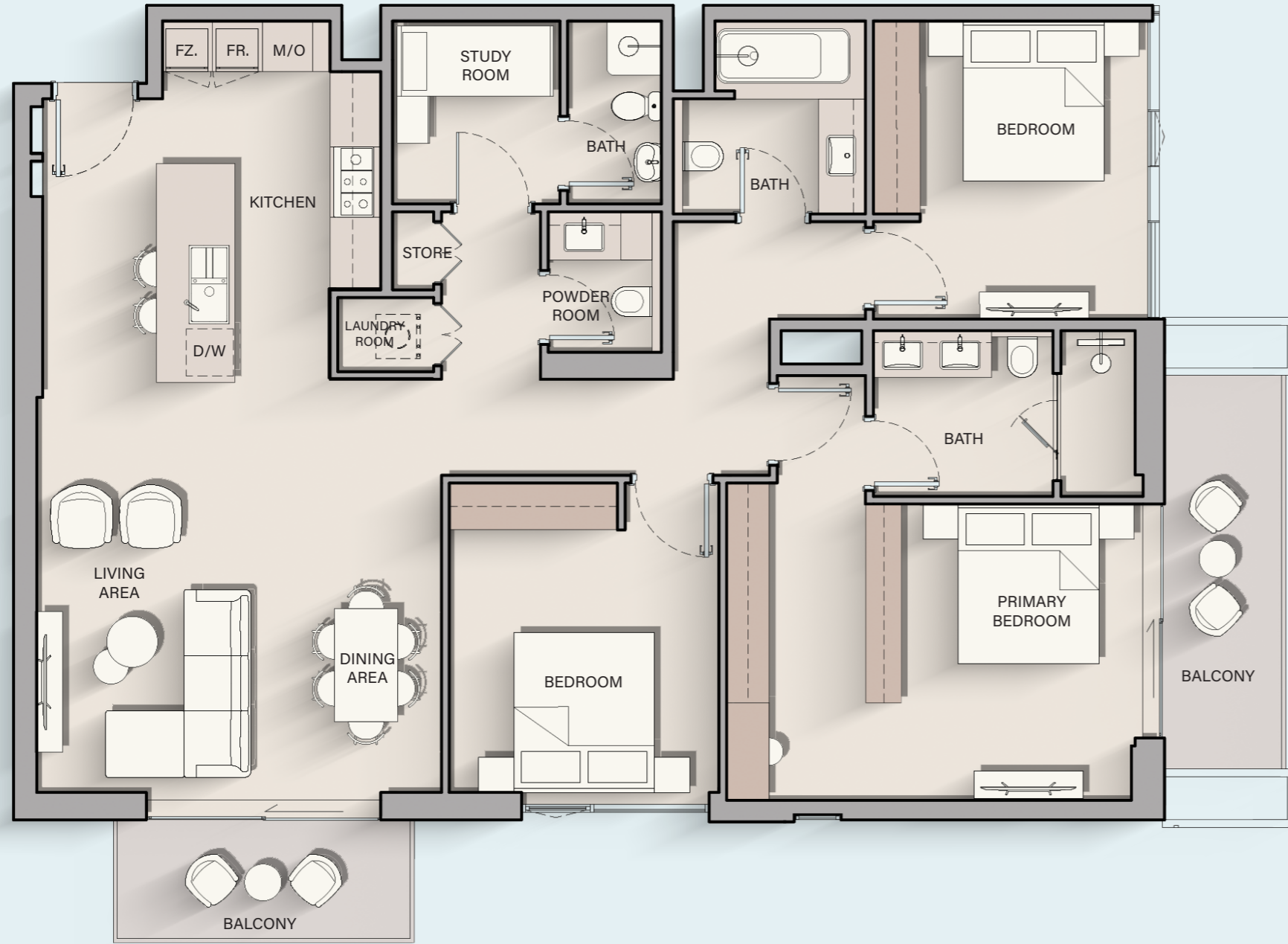
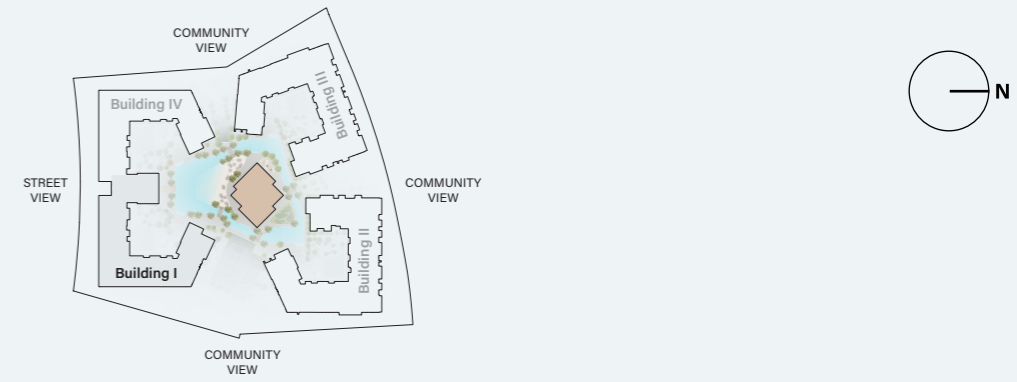
1ST - 5TH Floor



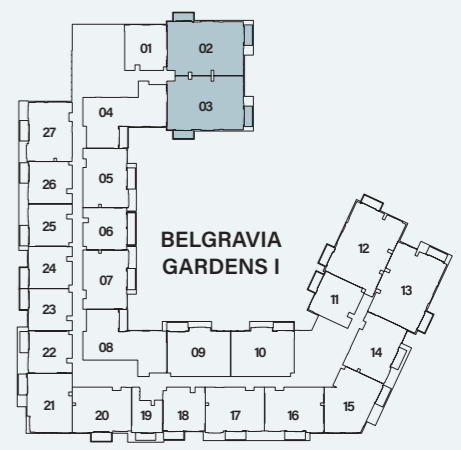
6TH Floor

3-BEDROOM

TYPE G



Ground Floor



1ST - 5TH Floor



6TH Floor

Internal Living Area : 1556.68 sq. ft.

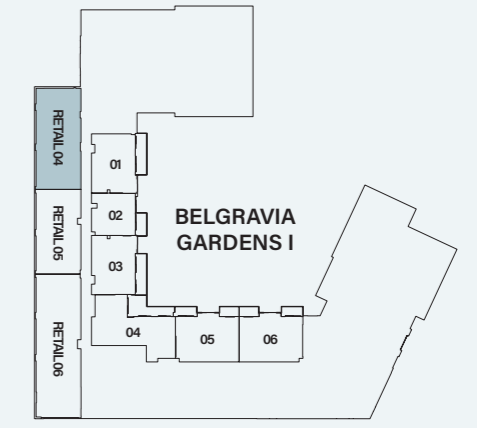
Outdoor Living Area : 156.40 sq. ft.

Total Living Area : 1713.08 sq. ft.

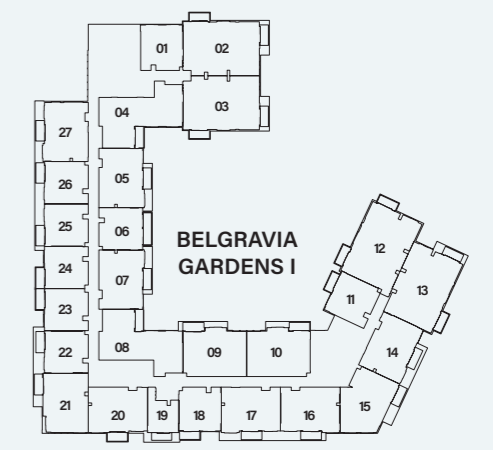
RETAIL-4



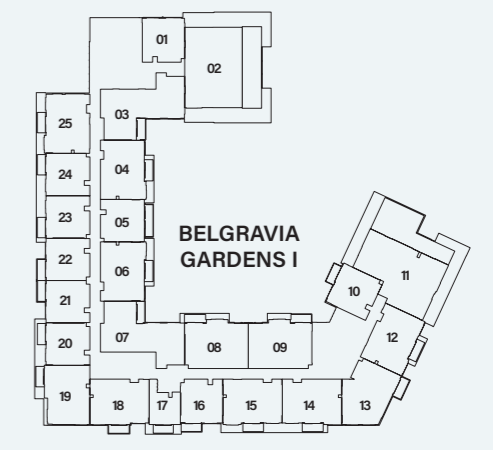
Internal Retail Area : 1755.16 sq. ft.



Ground Floor

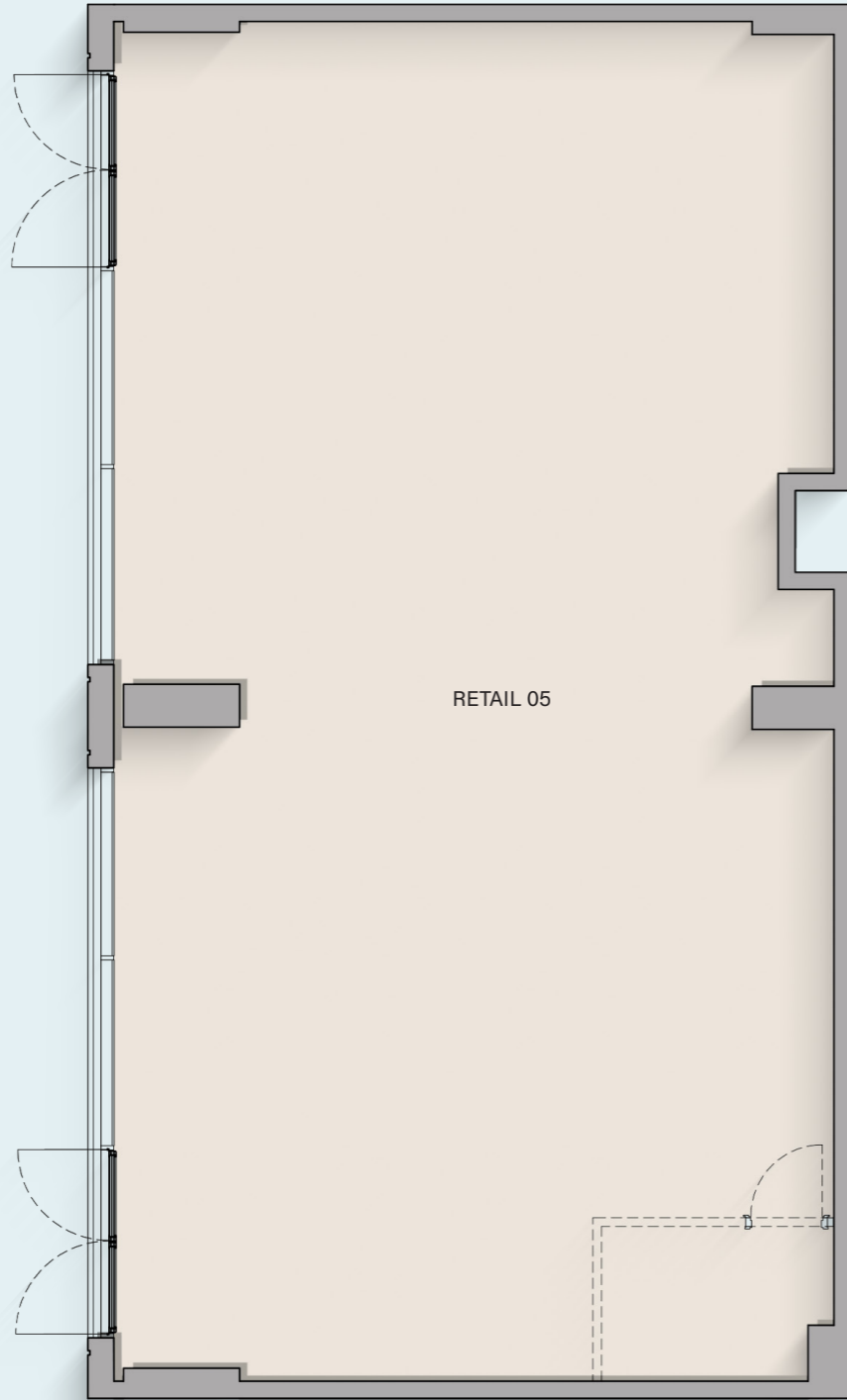


1ST - 5TH Floor

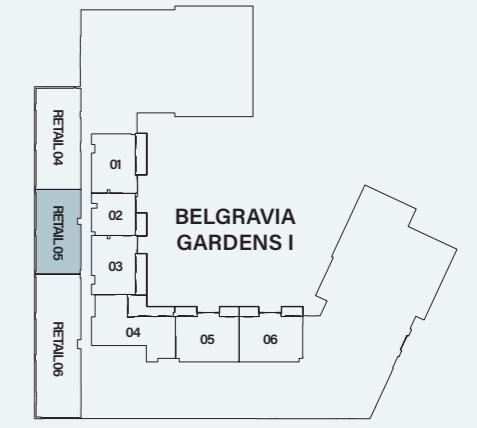


6TH Floor

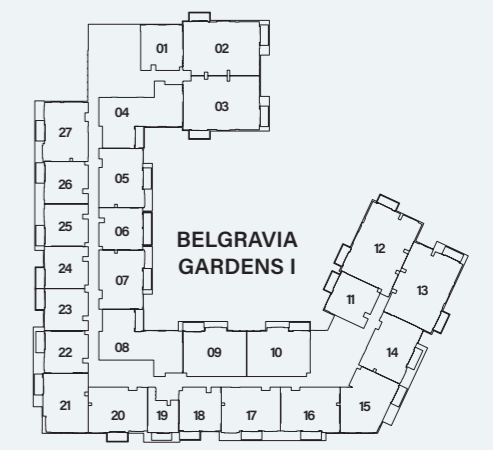
RETAIL-5



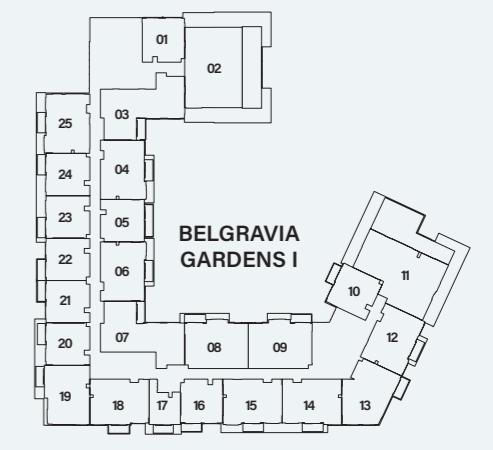
Internal Retail Area : 1460.23 sq. ft.



Ground Floor



1ST - 5TH Floor

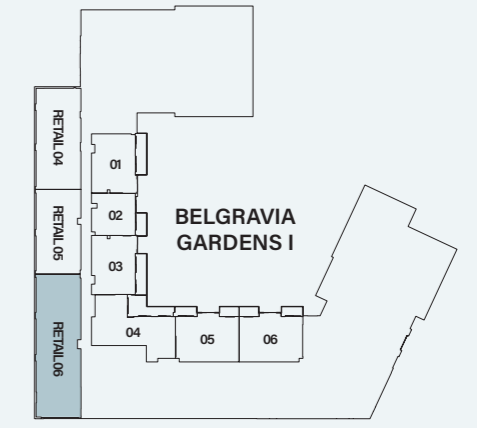


6TH Floor

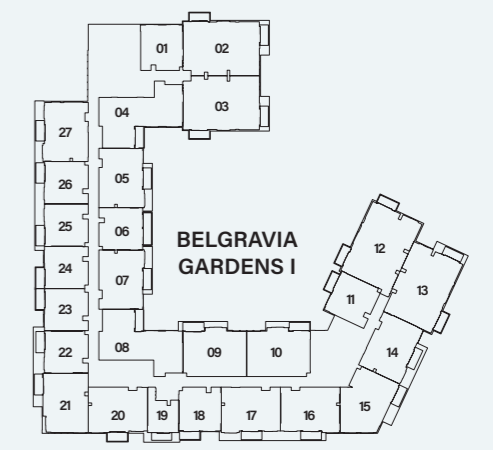
RETAIL-6



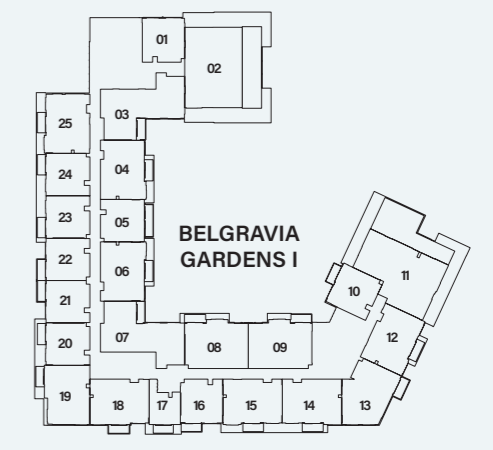
Internal Retail Area : 2478.39 sq. ft.



Ground Floor



1ST - 5TH Floor



6TH Floor




ELLINGTON
PROPERTIES

800 8288
info@ellingtongroup.com

ELLINGTONPROPERTIES.AE

The renderings and visualizations contained in this brochure are provided for illustrative and marketing purposes. While the information provided is believed to be accurate and reliable at the time of printing, only the information contained in the final Sales and Purchase Agreement will have any legal effect.